

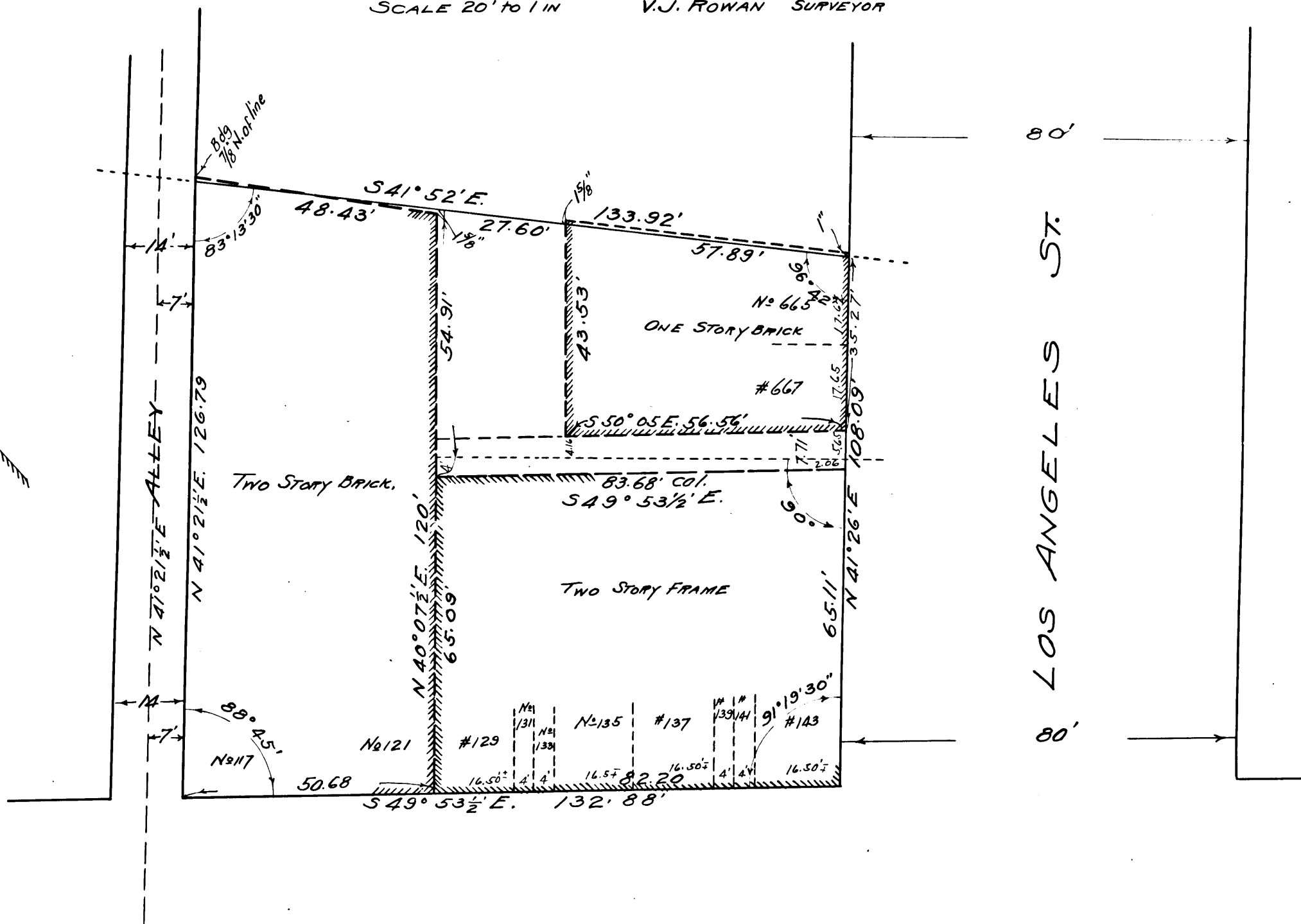
10TH

957

VEMCO PASADENA, CAL.

H405

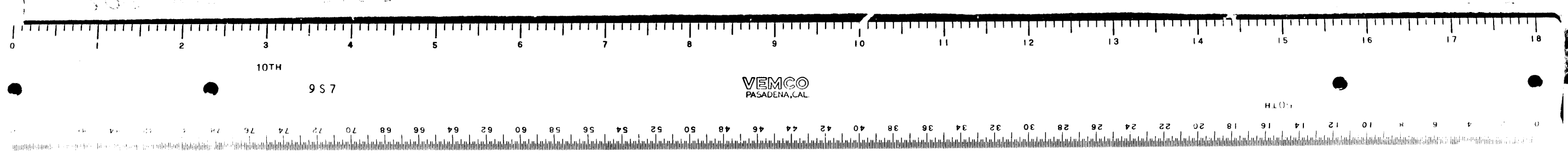
MAP
 OF PROPERTY LOCATED
 ON THE NORTHWESTERLY CORNER OF LOS ANGELES
 AND SEVENTH STREETS IN THE
 CITY OF LOS ANGELES, COUNTY OF LOS ANGELES,
 STATE OF CALIFORNIA
 OWNED BY THE
 KERKHOFF ESTATE COMPANY
 SURVEYED IN NOV. 1913.
 SCALE 20' TO 1" V.J. ROWAN SURVEYOR



SEVENTH ST.

Sup. Ct. Case No. B 52200 Suit for recovery of money
 Filed June 27, 1917.
 Thomas D. Campbell & Co.,
 vs.
 Kerkhoff Estate Co.,
 Judgment in favor of Plaintiff
 June 15, 1918. Judgment Book 427 Page 77

C.F. 908
 -



10TH

957

VEMCO PASADENA, CAL.

H410