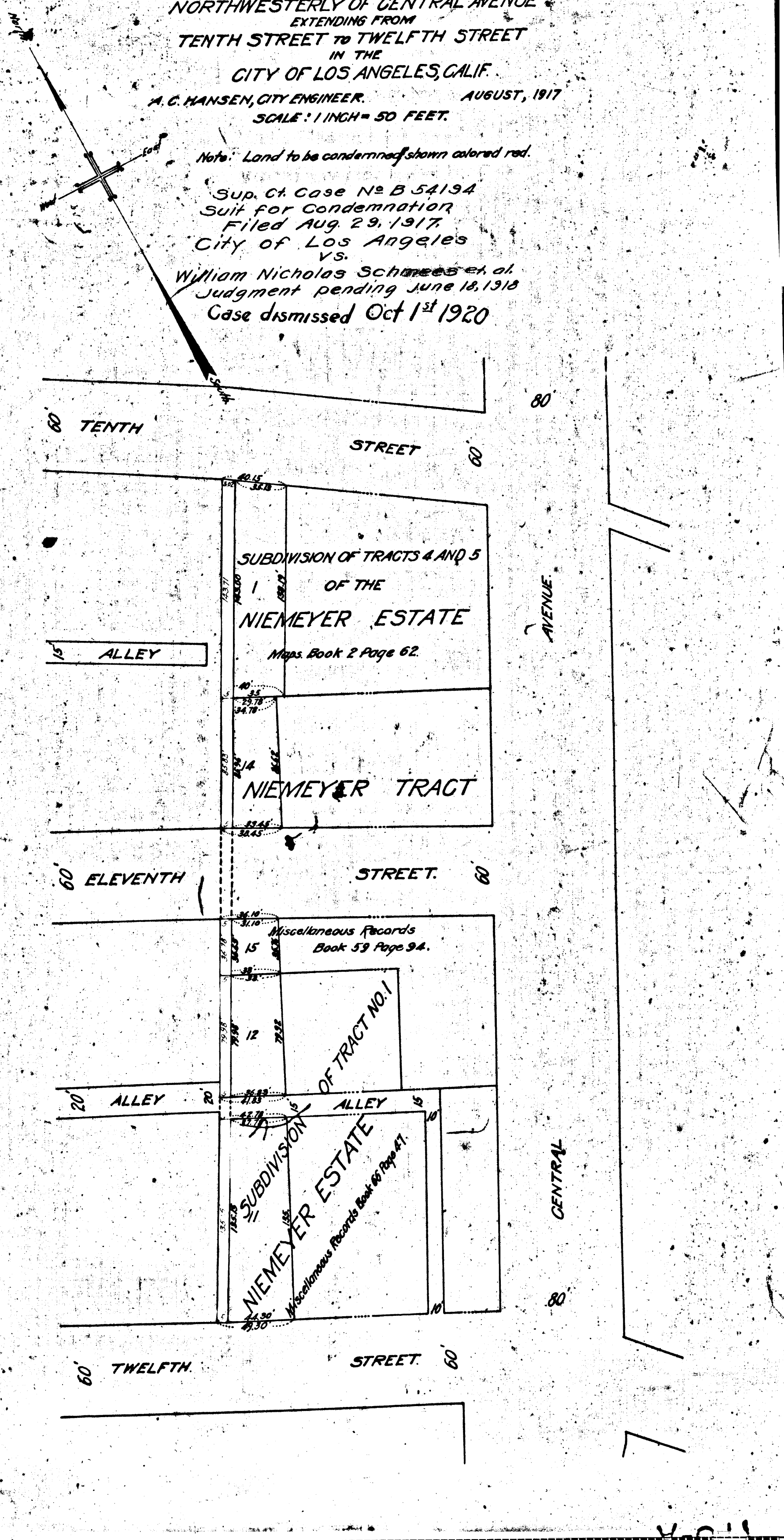


MAP  
SHOWING  
LAND TO BE CONDEMNED  
FOR A  
PUBLIC WALK AND STORM DRAIN PURPOSES  
LYING  
NORTHWESTERLY OF CENTRAL AVENUE  
EXTENDING FROM  
TENTH STREET TO TWELFTH STREET  
IN THE  
CITY OF LOS ANGELES, CALIF.

A. C. HANSEN, CITY ENGINEER. AUGUST, 1917  
SCALE: 1 INCH = 50 FEET.

Note: Land to be condemned shown colored red.

Sup. Ct. Case No B 54194  
Suit for Condemnation  
Filed Aug 29, 1917.  
City of Los Angeles  
vs.  
William Nicholas Schmees et al.  
Judgment pending June 18, 1918  
Case dismissed Oct 1<sup>st</sup> 1920



16 -

77