

MAP

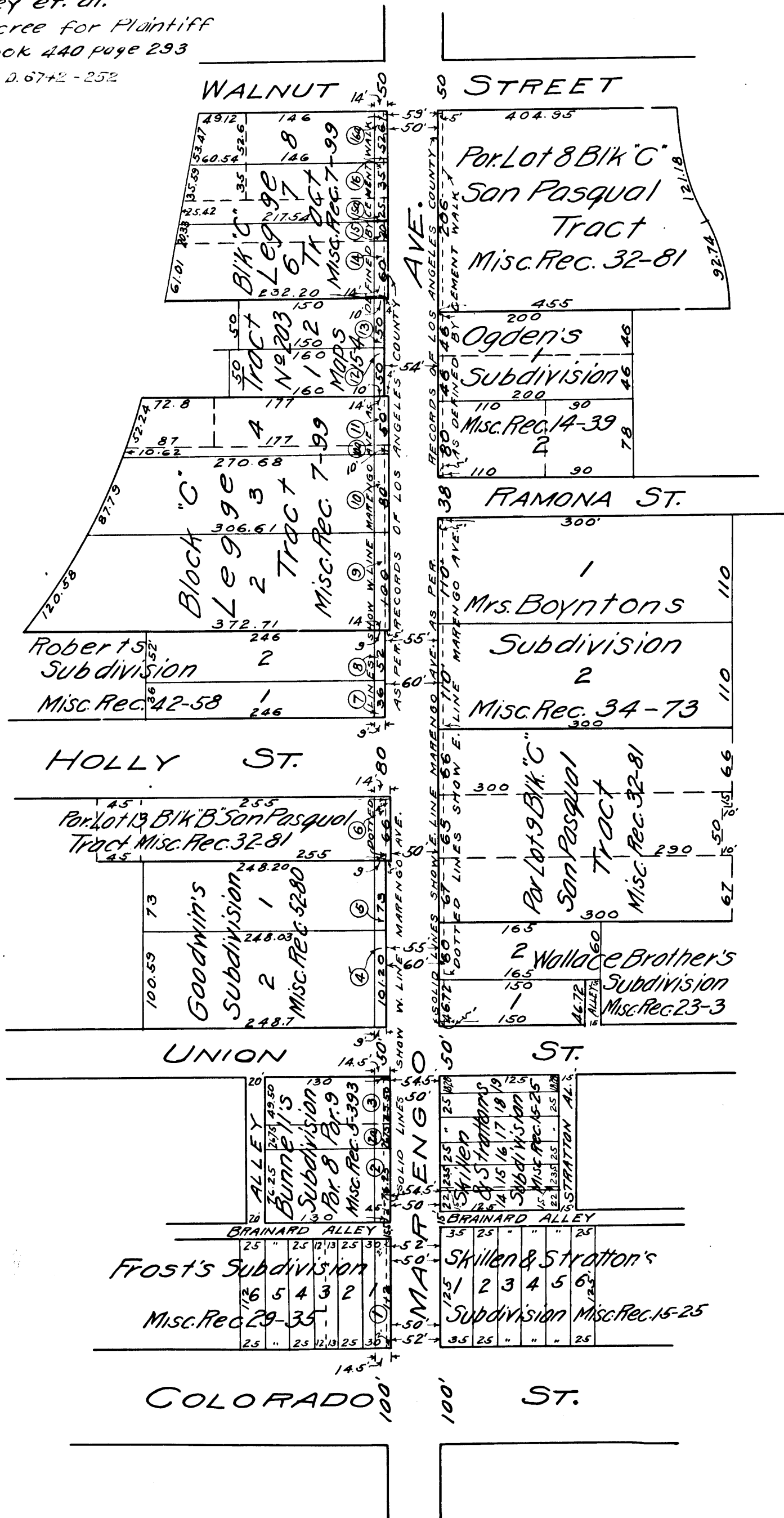
Showing land sought to be condemned for the widening of MARENGO AVENUE from the north line of Colorado Street to the south line of Walnut Street Pasadena, California.

Pasadena, California. August 1917. R.V. Orbison City Engineer
Scale: 1 inch = 100 feet

Index #8

Note: Shaded portion shows land sought to be condemned EXHIBIT "C"

Sup. Ct. Case No B54263
Suit for Widening of Marengo Ave. Filed Aug. 31, 1917.
City of Pasadena
vs.
Thomas Bradley et. al.
Judgment Interlocutory Decree for Plaintiff
June 3, 1918 Judgment Book 440 page 293
For Final Judgment see J:25-187 D.6742-252



C.F. 912

