

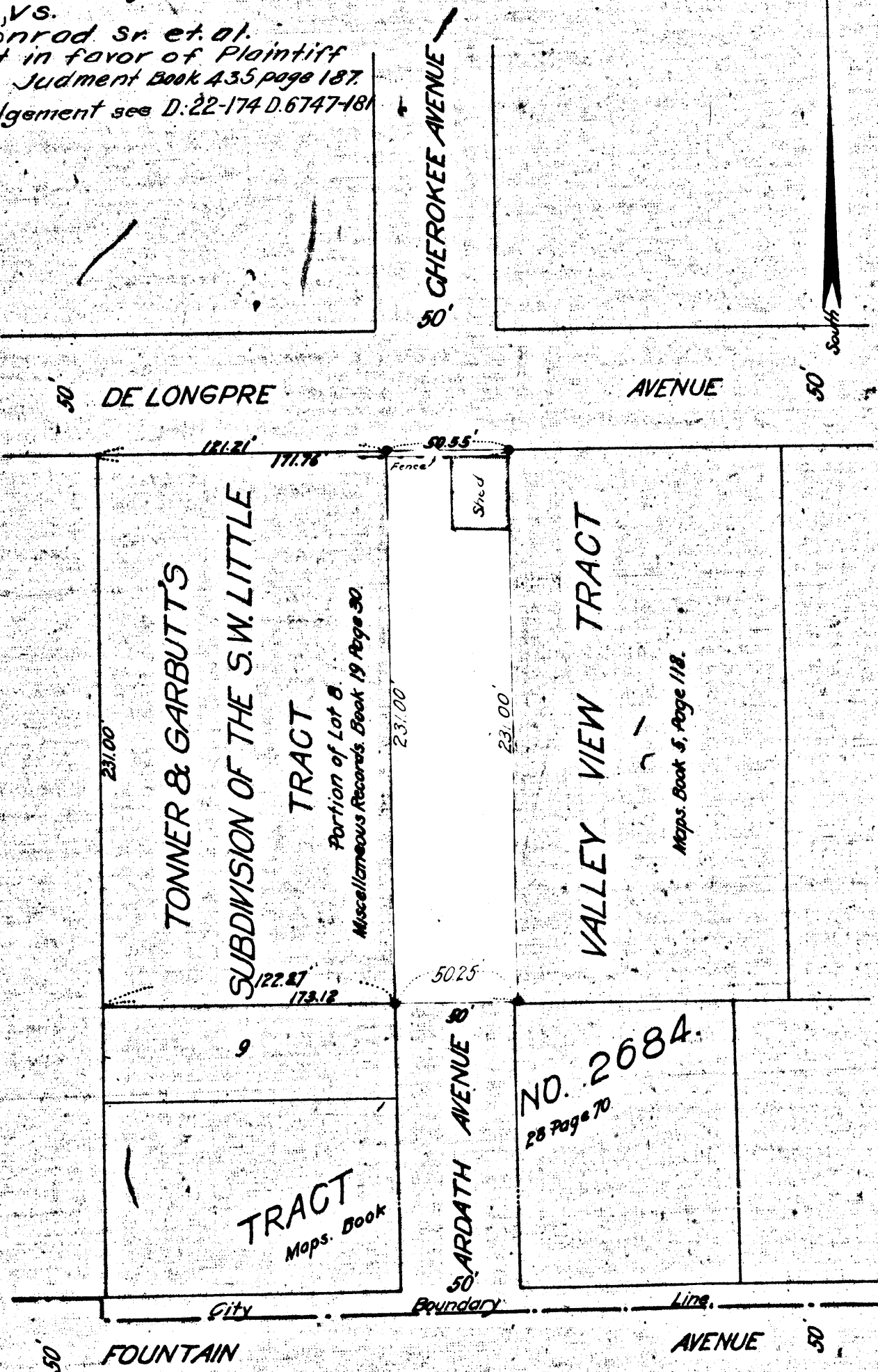
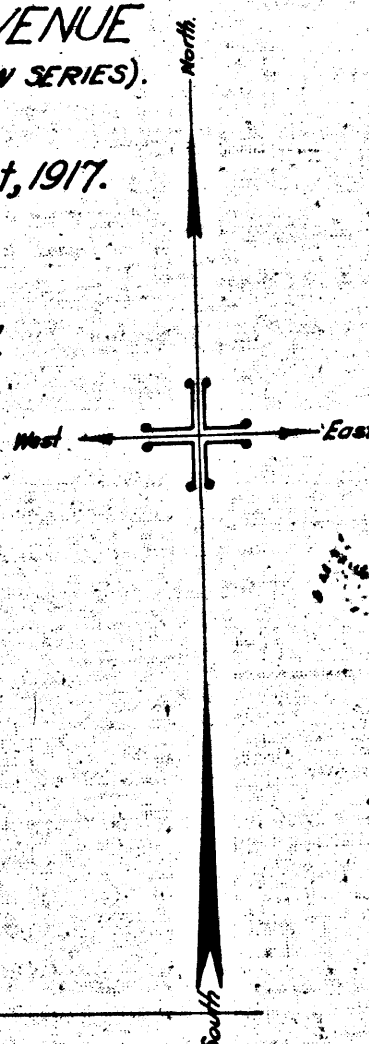
MAP
SHOWING
LAND TO BE CONDEMNED
FOR THE OPENING OF
ARDATH AVENUE

BETWEEN
FOUNTAIN AVENUE AND DE LONGPRE AVENUE
IN ACCORDANCE WITH ORDINANCES NUMBER 36492 AND 37201 (NEW SERIES).
CITY OF LOS ANGELES, CALIF.

A.C. Hansen, City Engineer. August, 1917.
Scale: 1 Inch = 50 Feet.

Note: Land to be condemned shown colored red.

Sup. Ct Case No B 58043
Filed Aug. 17, 1917.
Suit for Condemnation
City of Los Angeles
vs.
Fred Conrad sr. et al.
Int. Judgment in favor of Plaintiff
MAY 6, 1918. Judgment Book 435 page 187.
For Final Judgment see D. 22-174 D. 6747-181



2116