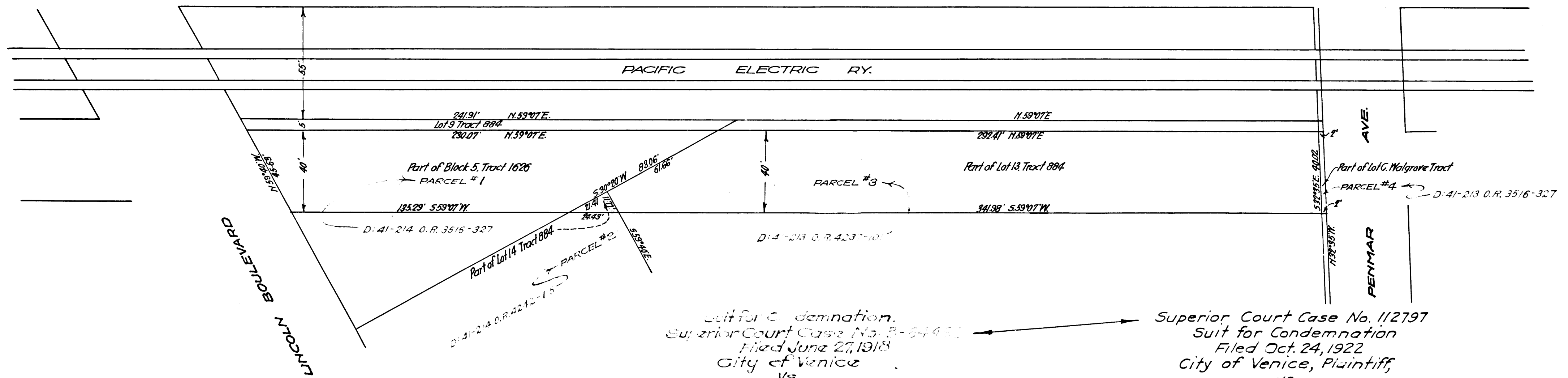
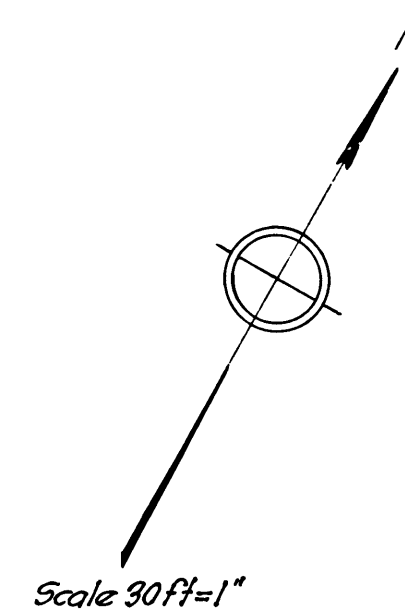


EXHIBIT 'C'

DIAGRAM SHOWING LANDS TO BE CONDEMNED
FOR THE OPENING OF
VIRGINIA AVE.



Suit for Condemnation.
Superior Court Case No. B-64451
Filed June 27, 1918
City of Venice
vs.
Title Guarantors and Trust Co., et al.
Case pending May 10th 1921
Pending Mar. 11, 1922
Pending May 10th 1924
Pending Feb. 18th 1925
Pending May. 1st 1926
Pending Apr. 1, 1927

Superior Court Case No. 112797
Suit for Condemnation
Filed Oct. 24, 1922
City of Venice, Plaintiff,
vs.
Title Guarantee & Trust Co., et al., Plifff.
Note: This suit covers the same prop-
erty (Par. 1 to 4) as S.C.C. B-64451 at left.
Final Judgment in favor of Plifff.
as per map, rendered Nov. 10, 1924.
E: 80-161, C.R. 2455 1-355

C.F. 919 -