

0 2 4 6 8 10 12 14 16 18 20 22 24 26 28 30 32 34 36 38 40 42 44 46 48 50 52 54 56 58 60 62 64 66 68 70 72 74 76 78 80 82 84 86 88 90
H.05
VEMCO PASADENA, CAL.
9 5 7
10TH

0 2 4 6 8 10 12 14 16 18 20 22 24 26 28 30 32 34 36 38 40 42 44 46 48 50 52 54 56 58 60 62 64 66 68 70 72 74 76 78 80 82 84 86 88 90
H.05
VEMCO PASADENA, CAL.
9 5 7
10TH

EXHIBIT 'C'

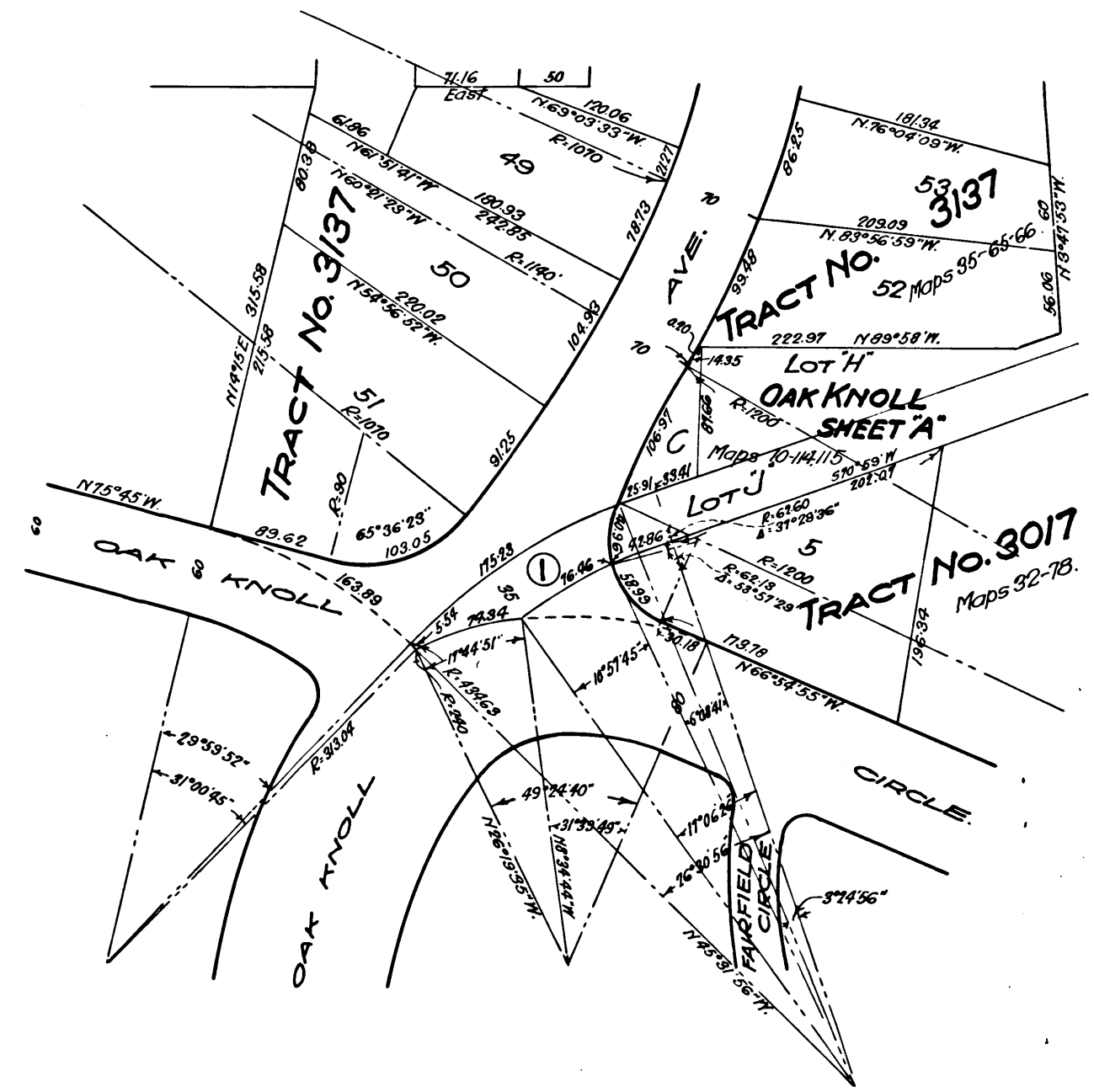
MAP SHOWING LAND SOUGHT TO BE CONDEMNED FOR
THE OPENING AND WIDENING OF OAK KNOLL AVENUE AT
OAK KNOLL CIRCLE, IN THE MANNER CONTEMPLA-
TED BY ORDINANCE NO 129 (P.W.) OF THE
CITY OF PASADENA, CALIFORNIA.

Pasadena, California, June 1918

R. K. Orbison City Engineer

Scale: 1"=100'

Note: Shaded portion shows land sought to be condemned.



Superior Court Case No. 64810
Sut. R. Independent vs. City
Filed July 1918.
City of Pasadena
vs.
Pac. Elec. Ry. Co.
Filed July 1918.

C.F. 920