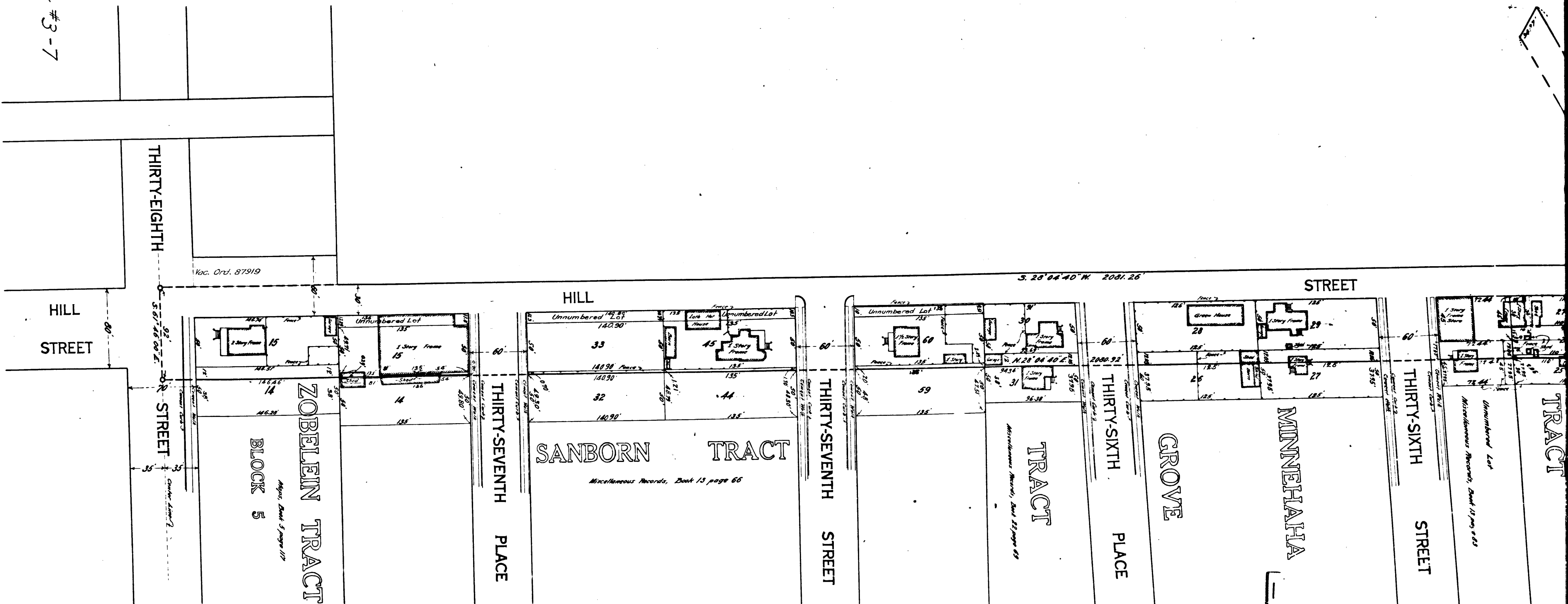
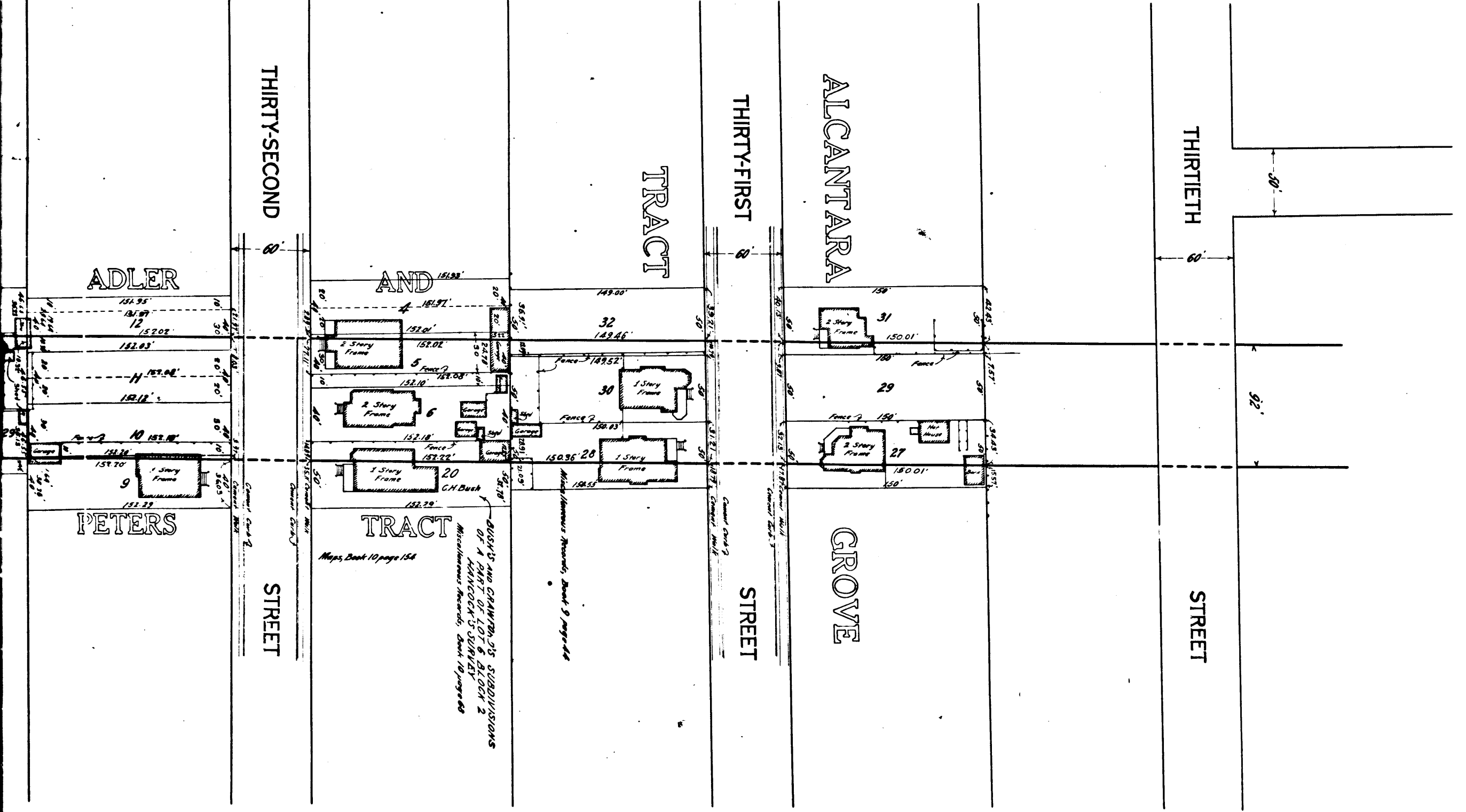
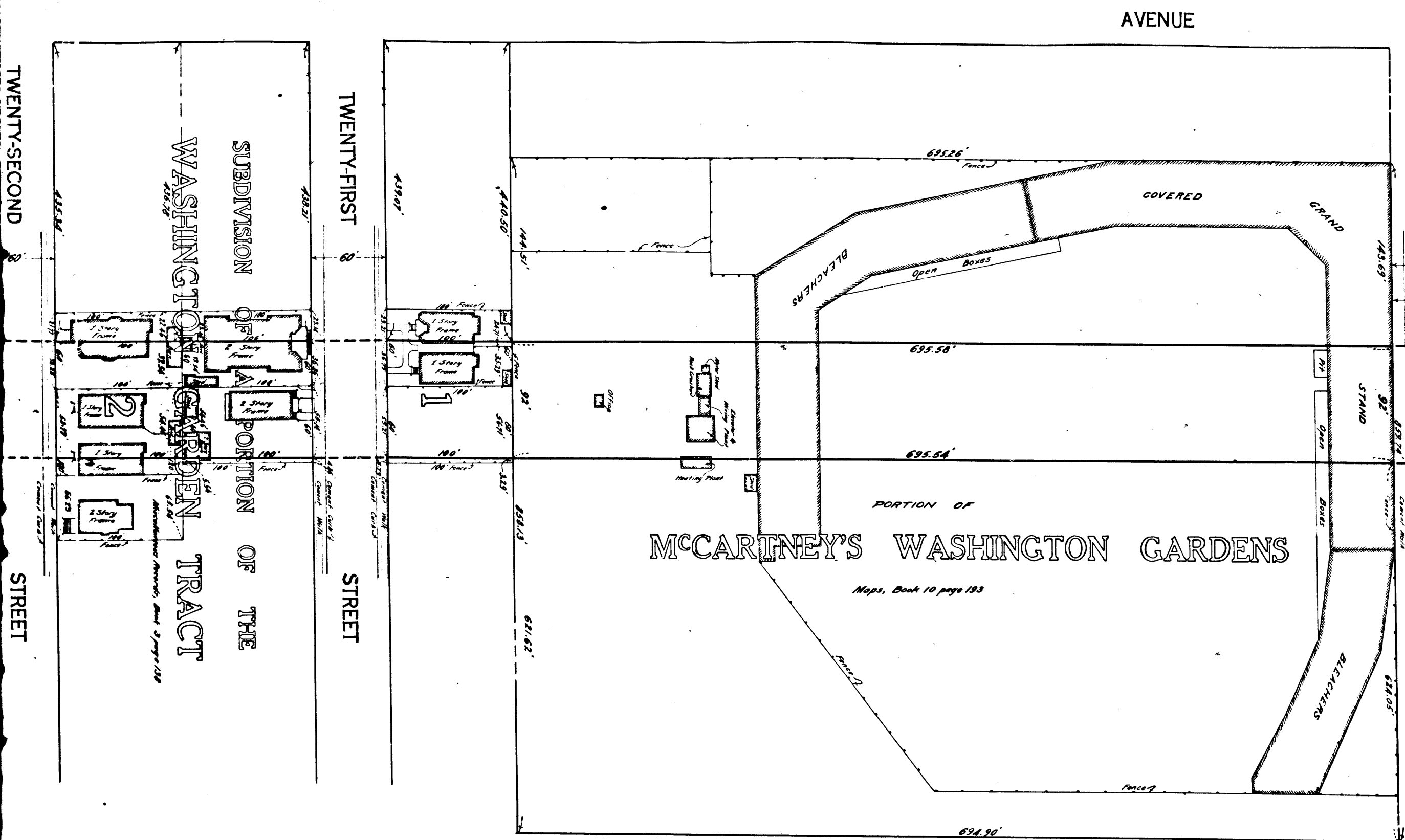


Index #3-7



C.F. 921



AVENUE

WASHINGTON STREET

HILL STREET

Index #3-7

Superior Court Case No B-68612
 Suit for Condemnation.
 Filed Nov. 9, 1913
 City of Los Angeles
 Chas. C. Heller et al.
 Interlocutory Judgement in favor of Plff. Mar 28, 1921
 Pending Mar 11, 1922
 Final judgement in favor of Plff. as per
 map, rendered November 13th, 1922.
 D. 35-108 Docket Book 539-352

MAP
 SHOWING THE LAND TO BE CONDEMNED
 FOR THE
 OPENING, WIDENING AND EXTENDING
 OF *Exhibit C.*
 HILL STREET
 FROM
 WASHINGTON STREET TO THIRTY-EIGHTH STREET
 IN THE
 CITY OF LOS ANGELES CAL.

In accordance with Ordinances Nos. 38055 & 38298 (New Series)

A. C. HANSEN, City Engineer

September 1918

Scale 1 Inch = 50 Feet

Note:-
 Land to be condemned shown colored red.
 Dotted lines and figures show where the actual
 holdings differ from the recorded subdivisions.

3
 C. F. 921 -