

V-1523

ALICIA ENGINEER'S OFFICE
CLARK OF LOS ANGELES
PROPERTY OF THE

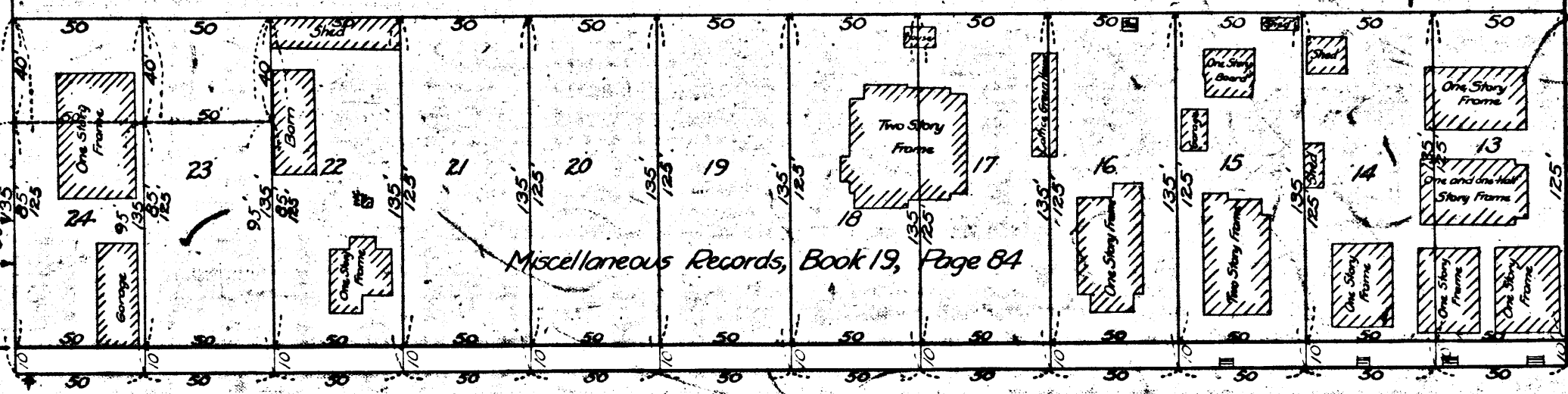
V-1524

80' AVENUE

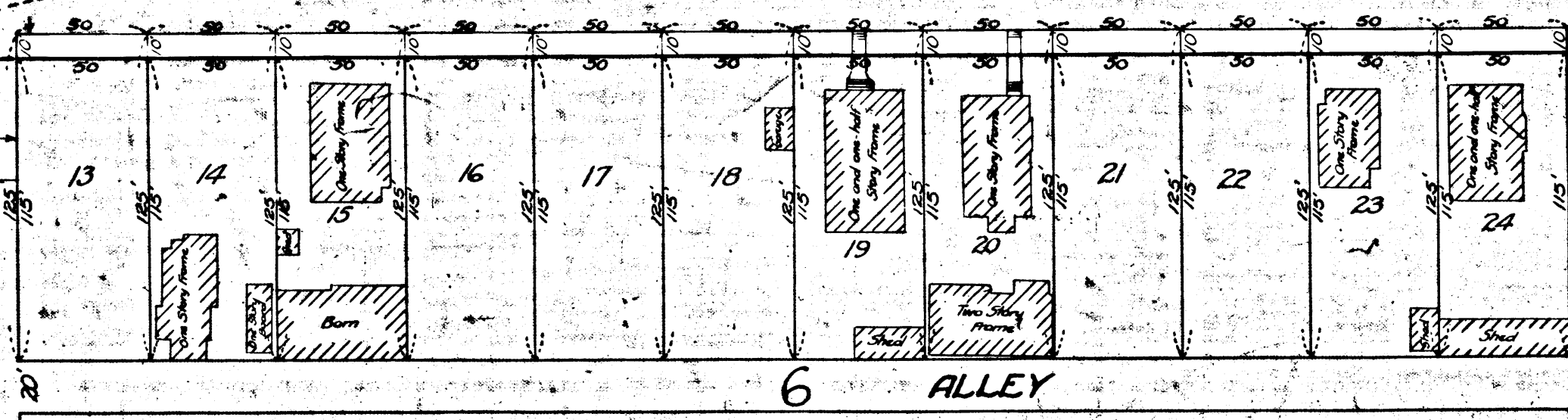
PACIFIC

60'

FOURTH
SEPULVEDA'S SUBDIVISION OF BLOCK 5,
TOWNSHIP OF SAN PEDRO



60'



SUBDIVISION OF BLOCK No. 6 AND
LOT 2 BLOCK 43 TOWNSHIP OF SAN PEDRO

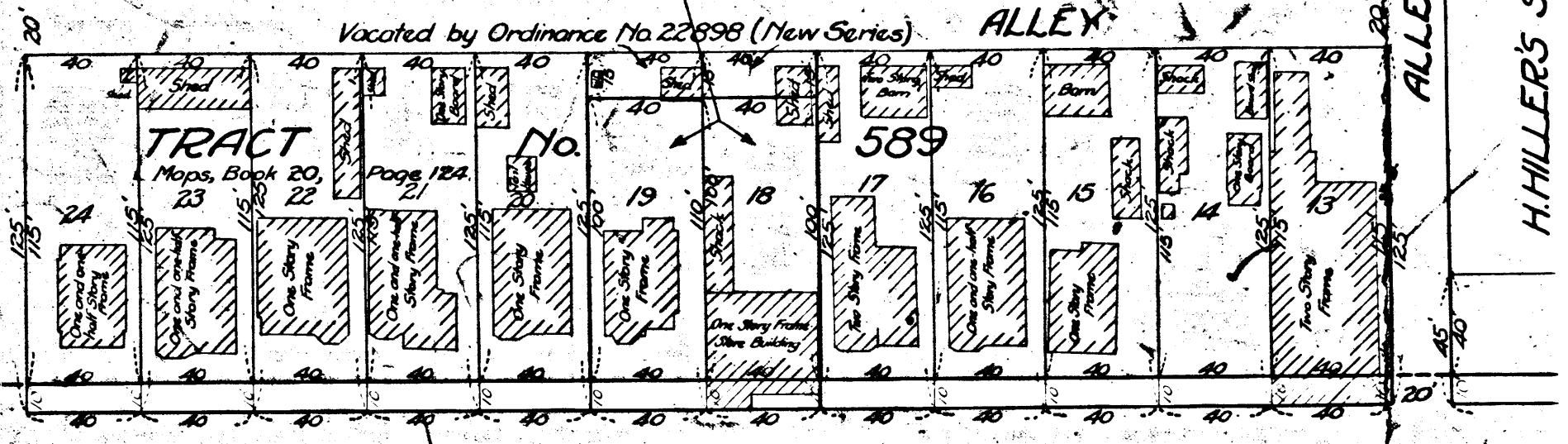
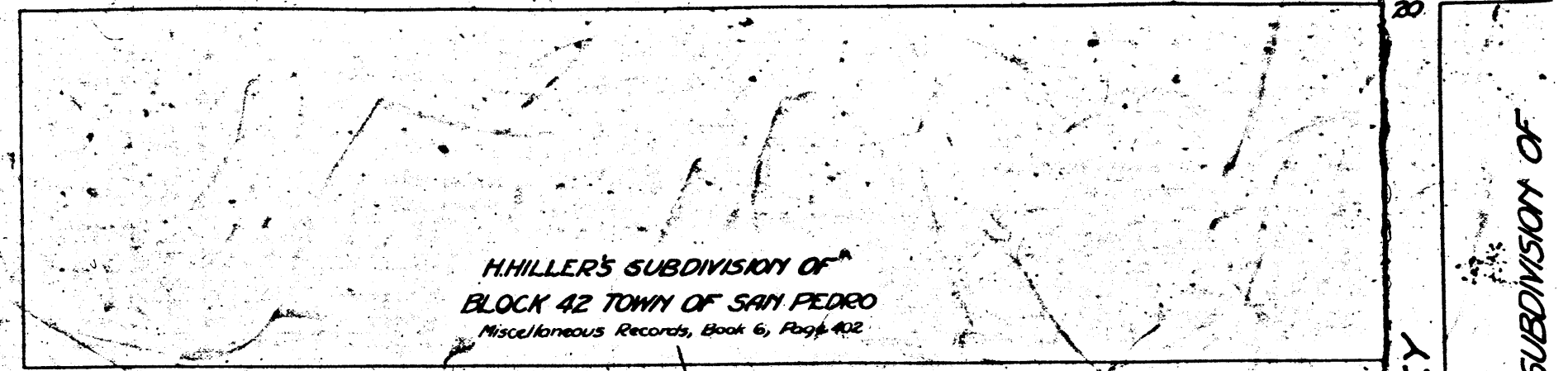
60'

SIXTH

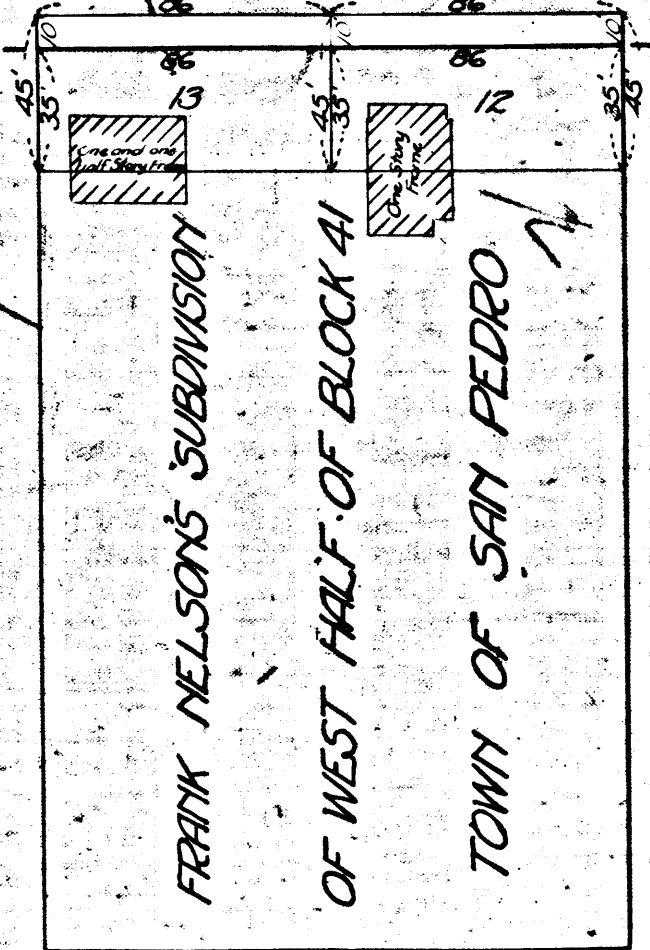
60' STREET

MESA

60'

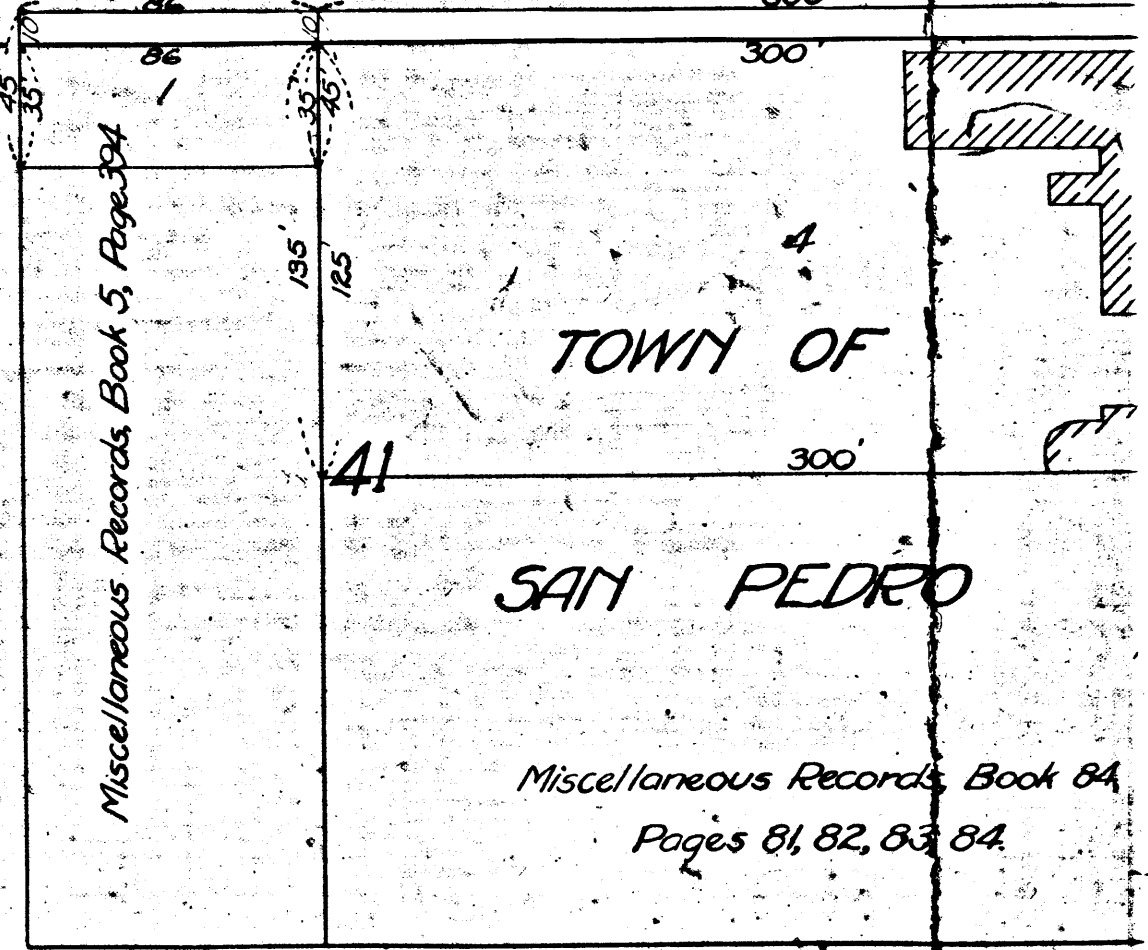


EAST 1990.52
WEST 1990.52



42' STREET

NELSON



HILLER'S SUBDIVISION OF

ALLEY

ALLEY

ALLEY

HILLERS' SUBDIVISION OF
BLOCK 42 TOWNSHIP OF SAN PEDRO
Miscellaneous Records, Book 6, Page 402

Three Story Brick School Building

Book 84
84

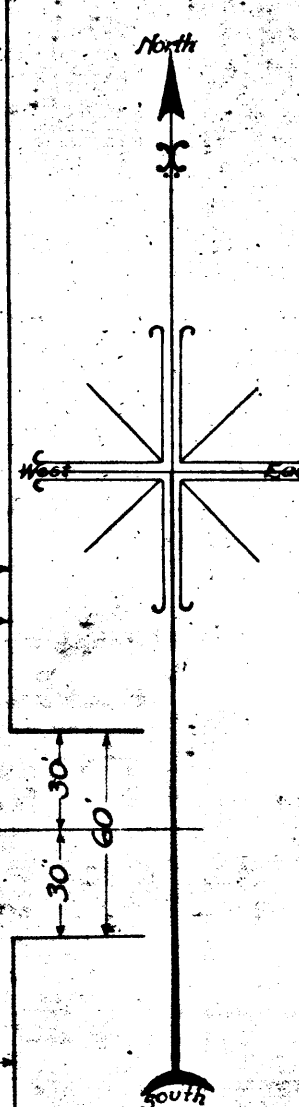
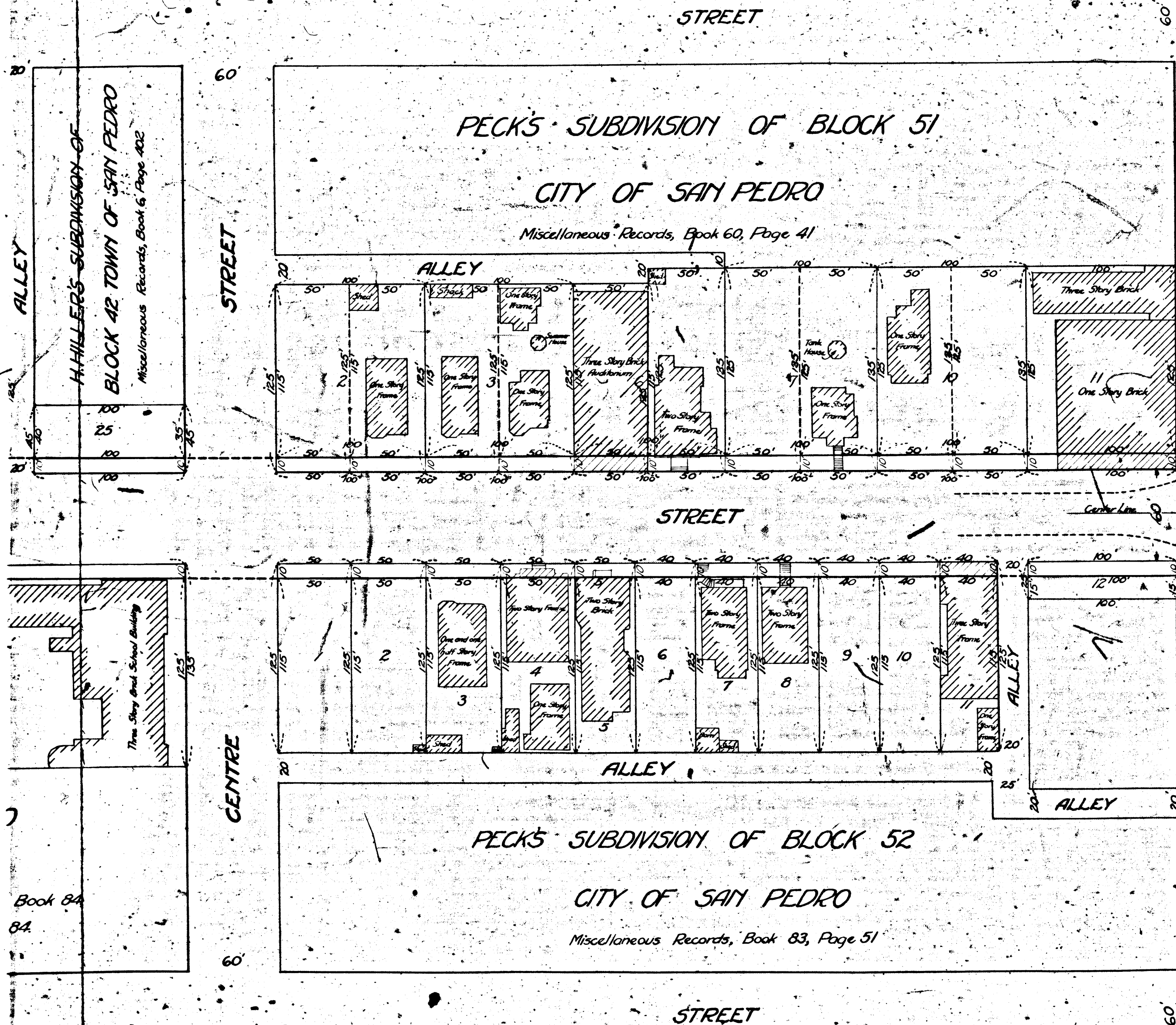


EXHIBIT "D"
MAP
SHOWING THE LAND TO BE CONDEMNED
FOR THE OPENING, WIDENING AND EXTENDING OF
FIFTH STREET
BETWEEN
PALOS VERDES STREET
AND
PACIFIC AVENUE
IN THE
CITY OF LOS ANGELES

SAN PEDRO DISTRICT. 1
In Accordance with Ordinances Nos. 42119 and 42541 (New Series)
JOHN A. GRIFFIN, City Engineer November 1921
Scale 1 Inch = 50 Feet
Note - Land to be condemned shown colored red.
Dotted lines and figures show where the holdings
differ from the recorded subdivisions.

Superior Court Case No. 102565
Suit for Condemnation
Filed Feb. 7th 1922
City of Los Angeles, Plff.
Vs.
J. Crampton Anderson, et al. Def.
Pending March 1st 1922
Interlocutory Judgment Rendered April 3rd 1924
Pending May 10th 1924
Pending Feb. 18th 1925
Final judgement of Plff. as per
map, rendered July 29, 1925
D:47-164 O.R.5134-308

5531-A

5531-A