

MAP
SHOWING THE LAND TO BE CONDEMNED FOR THE
WIDENING OF

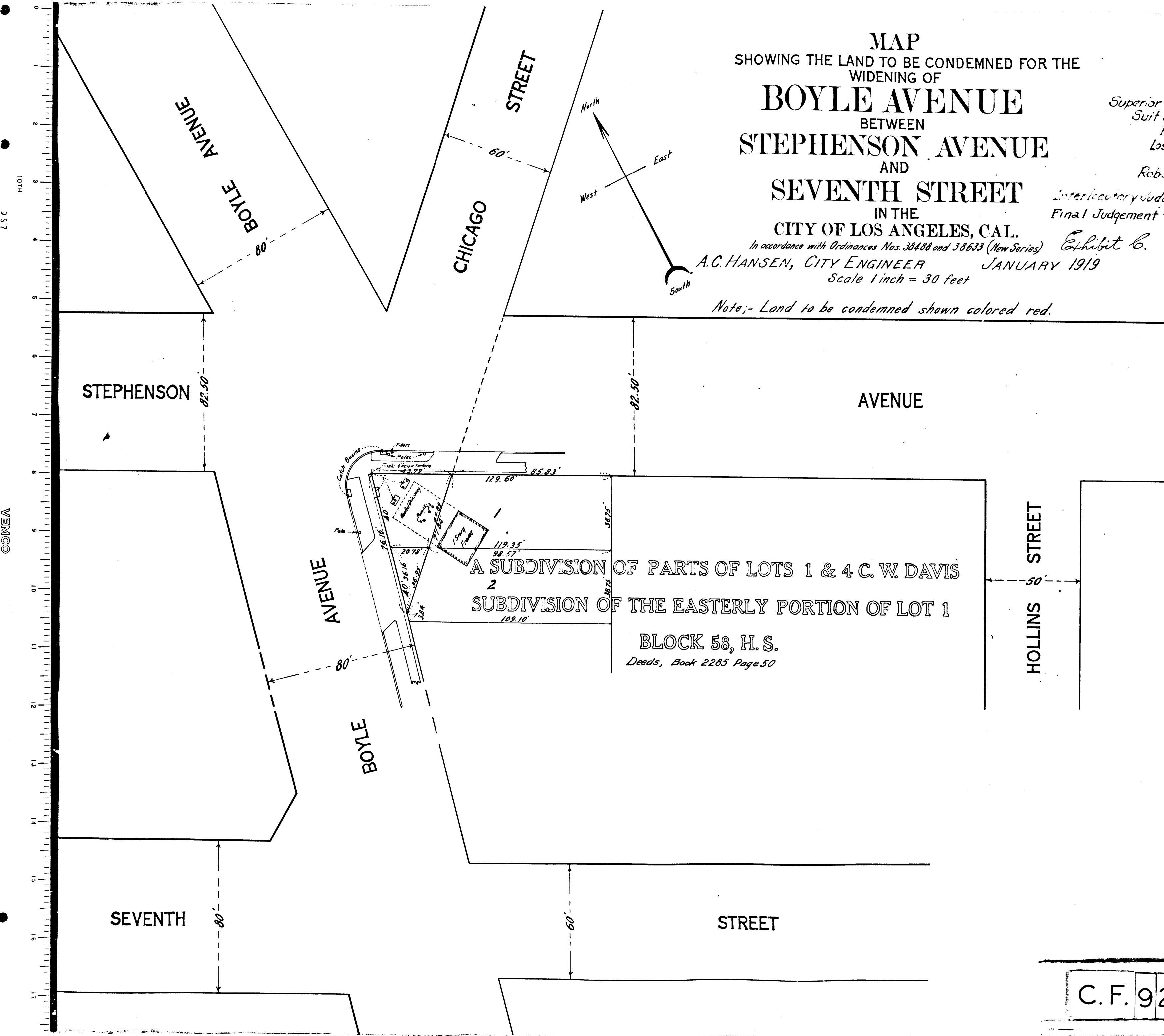
BOYLE AVENUE
BETWEEN
STEPHENSON AVENUE
AND
SEVENTH STREET
IN THE
CITY OF LOS ANGELES, CAL.

In accordance with Ordinances Nos. 38488 and 38633 (New Series) *Exhibit C.*
A.C. HANSEN, CITY ENGINEER JANUARY 1919
Scale 1 inch = 30 feet

Superior Court Case No. B-70705
Suit for Condemnation
Filed Jan 23, 1919
Los Angeles, City
Vs.
Robert D. Johnson et al.

Interlocutory Judgment in favor of Pltff. Mar. 8, 1920.
Final Judgment - Order dismissing Action Mar. 2, 1921

Note:- Land to be condemned shown colored red.



C. F. 923 -