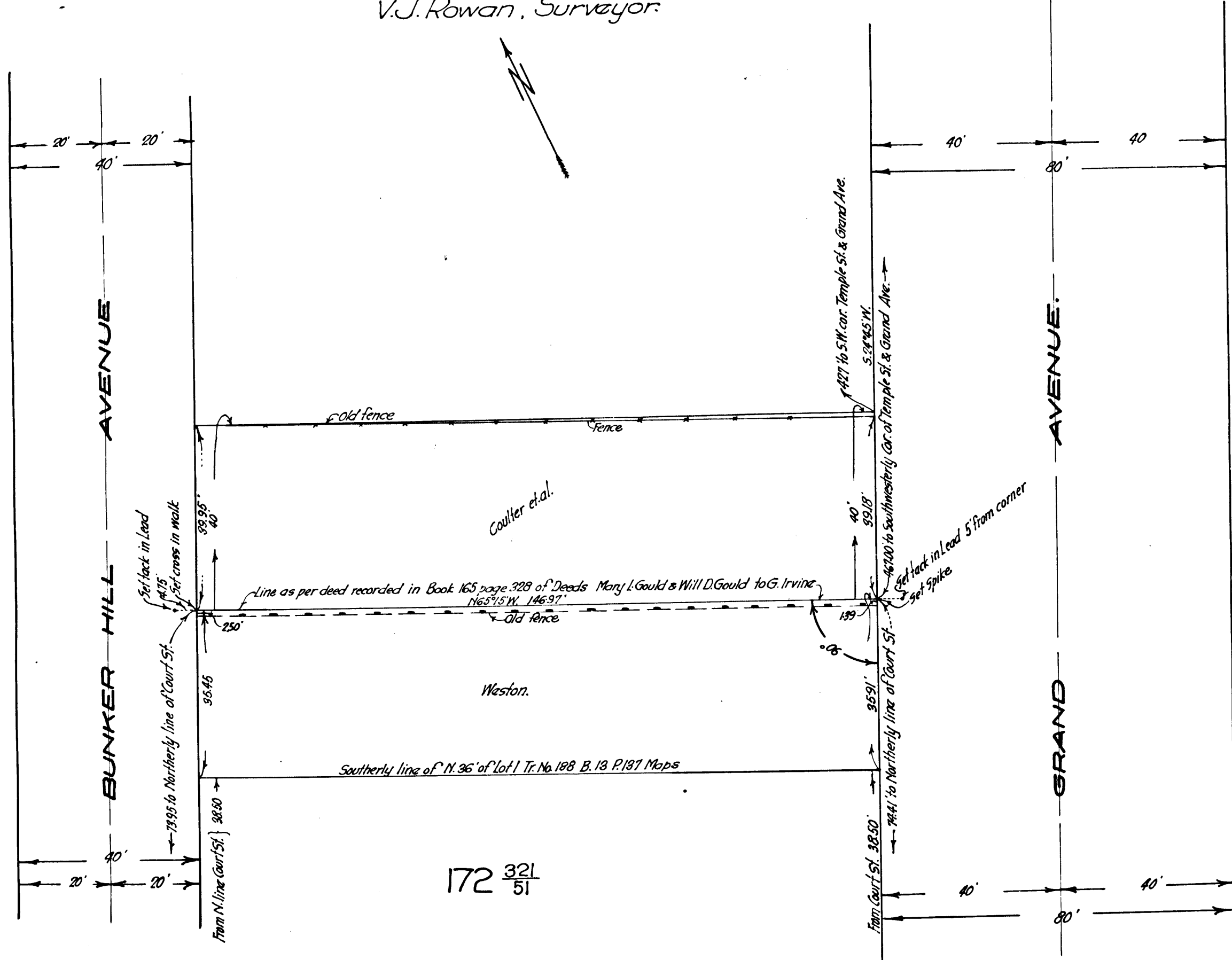


MAD

Of a line, in Block H, Mott Tract, drawn at right angles to the line of Grand Avenue at a point distant S.24°45'W. 467.00 feet from the Southwesterly corner of Temple Street & Grand Avenue in the City of Los Angeles, California. Scale 20 feet to one inch Surveyed in June 1918 by V.J. Rowan, Surveyor.

Superior Court Case No. B-59321 Filed Jan. 21, 1918. Suit to Quiet Title Lucian Weston vs Alice W. Coulter et al. Final Judgment dated July 17, 1918 entered in Judgment Book No. 447 Page 200 and 202 In favor of Lucian Weston for portion colored yellow.



172 321 / 51

C.F. 924 -

