

028-A

028-A

RETURN TO CITY ENGINEER'S OFFICE
CITY OF LOS ANGELES
PROPERTY OF THE

STATE OF CALIFORNIA
Proceeding No. 2-2-1919
Intention 38799 (N.S.)
Filed 38975 (N.S.)
Judgment rendered Feb. 3, 1920.
Original map 858

MAP
SHOWING THE LAND TO BE CONDEMNED
FOR THE OPENING OF
SEVENTY-EIGHTH STREET
BETWEEN
FIGUEROA STREET AND MONETA AVENUE

IN THE
CITY OF LOS ANGELES, CALIFORNIA,
IN ACCORDANCE WITH ORDINANCES NOS. 38799 AND 38975 (NEW SERIES)
A.C. HANSEN, CITY ENGINEER. JUNE, 1919.

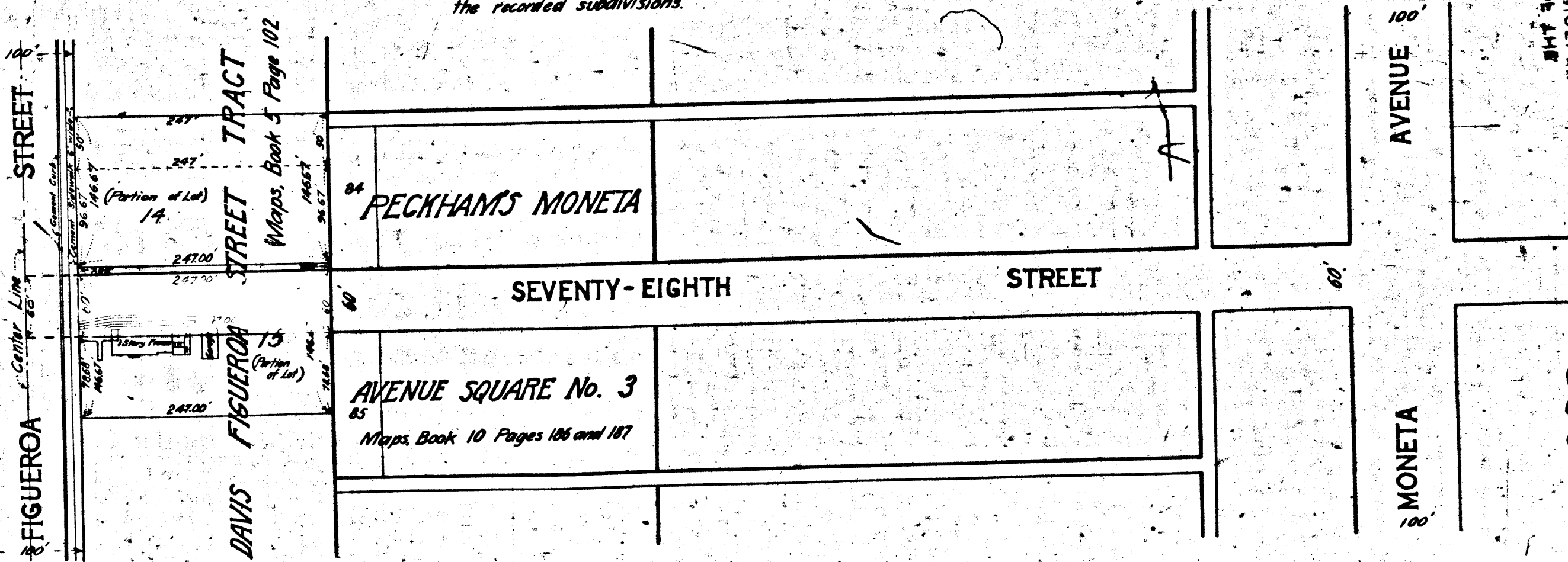
Scale: - 1 inch = 100 feet.

Note:-
Land to be condemned shown colored red.
Dotted lines and figures show where the actual holdings differ from
the recorded subdivisions.

Superior Court Case No. B-75492
Suit For Condemnation
Filed July 16, 1919
City of Los Angeles Plff.

Vs.
Marquerite Tatsch et. al. Def.
Interlocutory Judgement In Favor of Plaintiff
Rendered Feb. 3, 1920.

Judgement rendered in favor of the
Plff. July 20, 1920. See D. 34130: 7248-234



NORTH
WEST
EAST
SOUTH

028-A

028-A

RETURN TO CITY ENGINEER'S OFFICE
CITY OF LOS ANGELES
PROPERTY OF THE