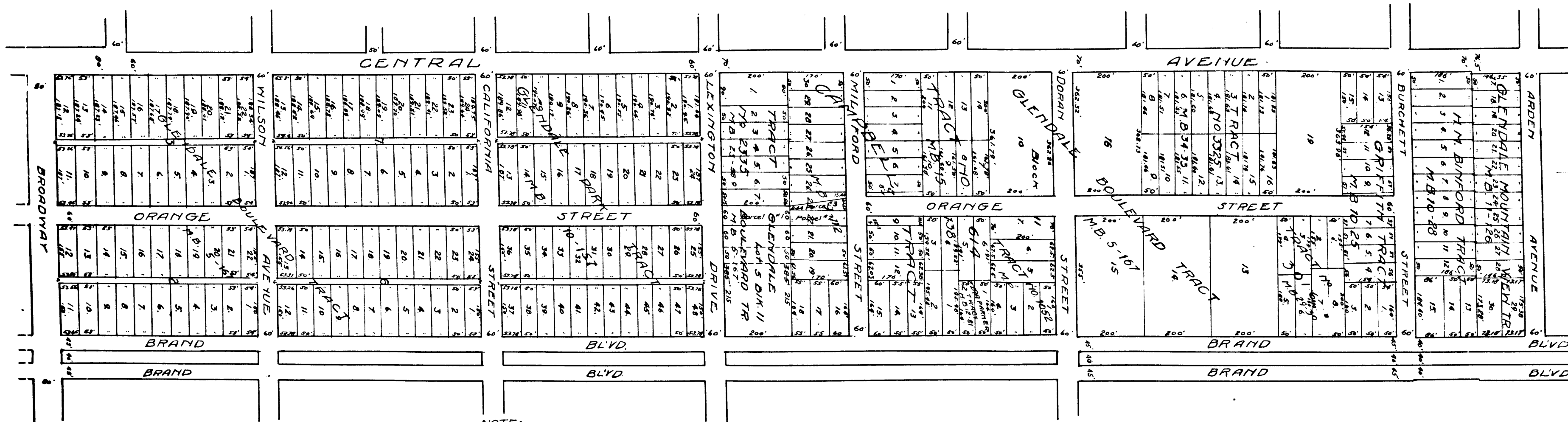


Superior Court Case No. B-76287
 Suit For Condemnation
 Filed Aug. 15, 1919
 City of Glendale, Plff.
 Vs.

Frank May, et al. Def.
 Interlocutory Judgment Rendered Jan. 15, 1920.
 Pending June 2, 1920.
 Pending May 11th 1921

Final Judgment June 29th 1921
 See O.R. 388-173 D:30-177
 D. 11-128 O.R. 1260-113



NOTE:- This is not a duplicate of the original map filed in Superior Court Case No. B-76287. The scale of the original is 1" = 100 feet and it extends only from Lexington Dr. to Milford St. County Surveyor June 2, 1920

Exhibit 'C'

MAP SHOWING
 LAND TO BE CONDEMNED
 FOR THE
 LAYING OUT AND OPENING OF
 ORANGE STREET
 FROM THE
 NORTH LINE OF LEXINGTON DRIVE
 TO THE
 SOUTH LINE OF MILFORD STREET
 IN THE CITY OF GLENDALE

5641

C.F. 931 -