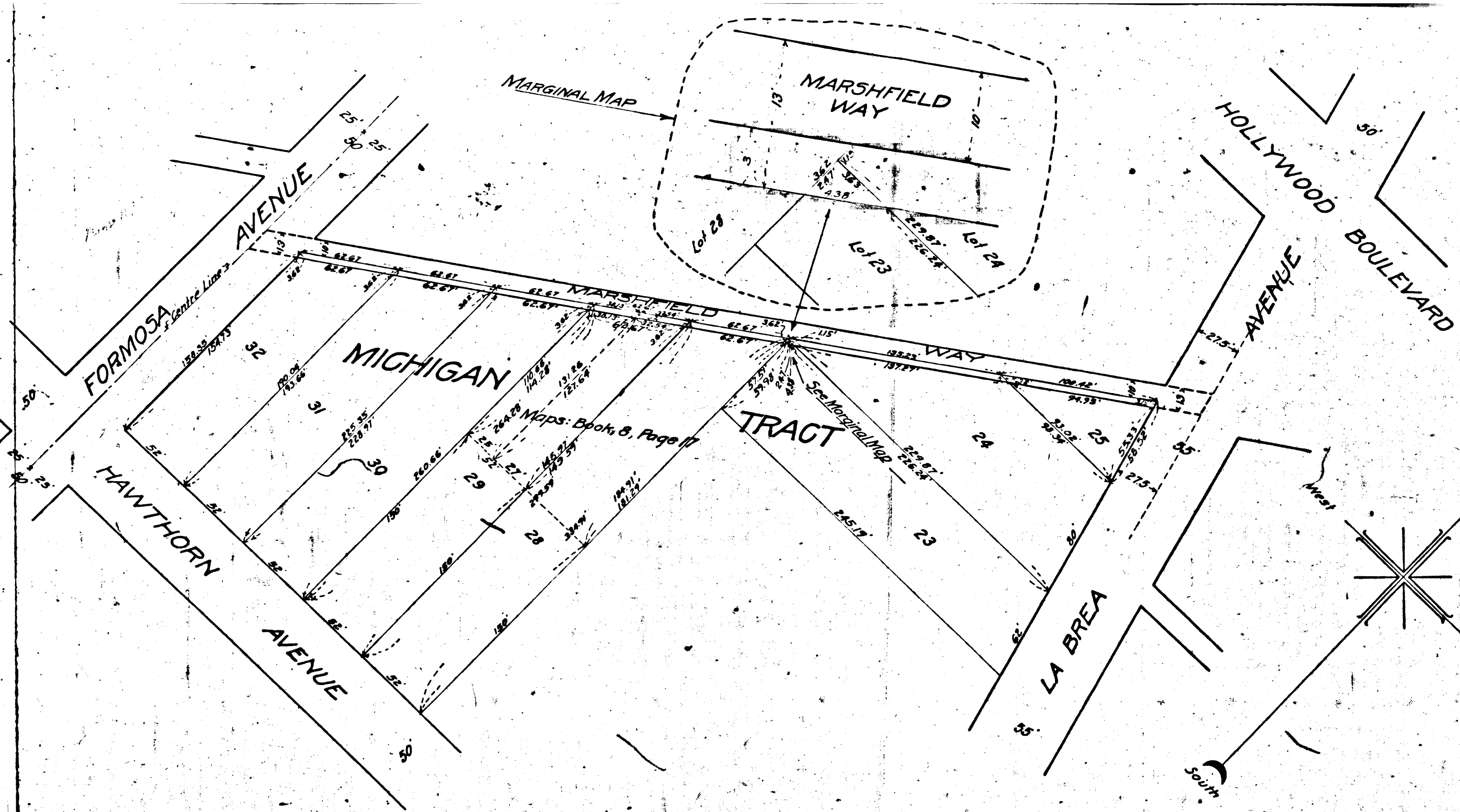


ROOSEVELT



MAP
 Showing the Land to Be Condemned
 for the Widening of
MARSHFIELD WAY
 between
 FORMOSA AVENUE
 and
 LA BREA AVENUE
 in the

CITY OF LOS ANGELES, CAL.
 In accordance with Ordinances Nos. 39140 and 39343 New Series
 A.C. Hansen, City Engineer
 September, 1919
 Scale: 1 inch = 50 feet

Note:-
 Land to be condemned shown colored red.
 Dotted lines and figures show where the holdings
 differ from the recorded subdivision

Superior Court Case No B-77613
 Suit For Condemnation
 Filed Oct. 14, 1919
 City of Los Angeles, Plff.
 Vs.
 Bertha M. Hatch, et al., Def.

Case dismissed by order of the Court
 Mar. 16th 1932. Judg. Bk. 815- Pending Apr. 1, 1927

A-880