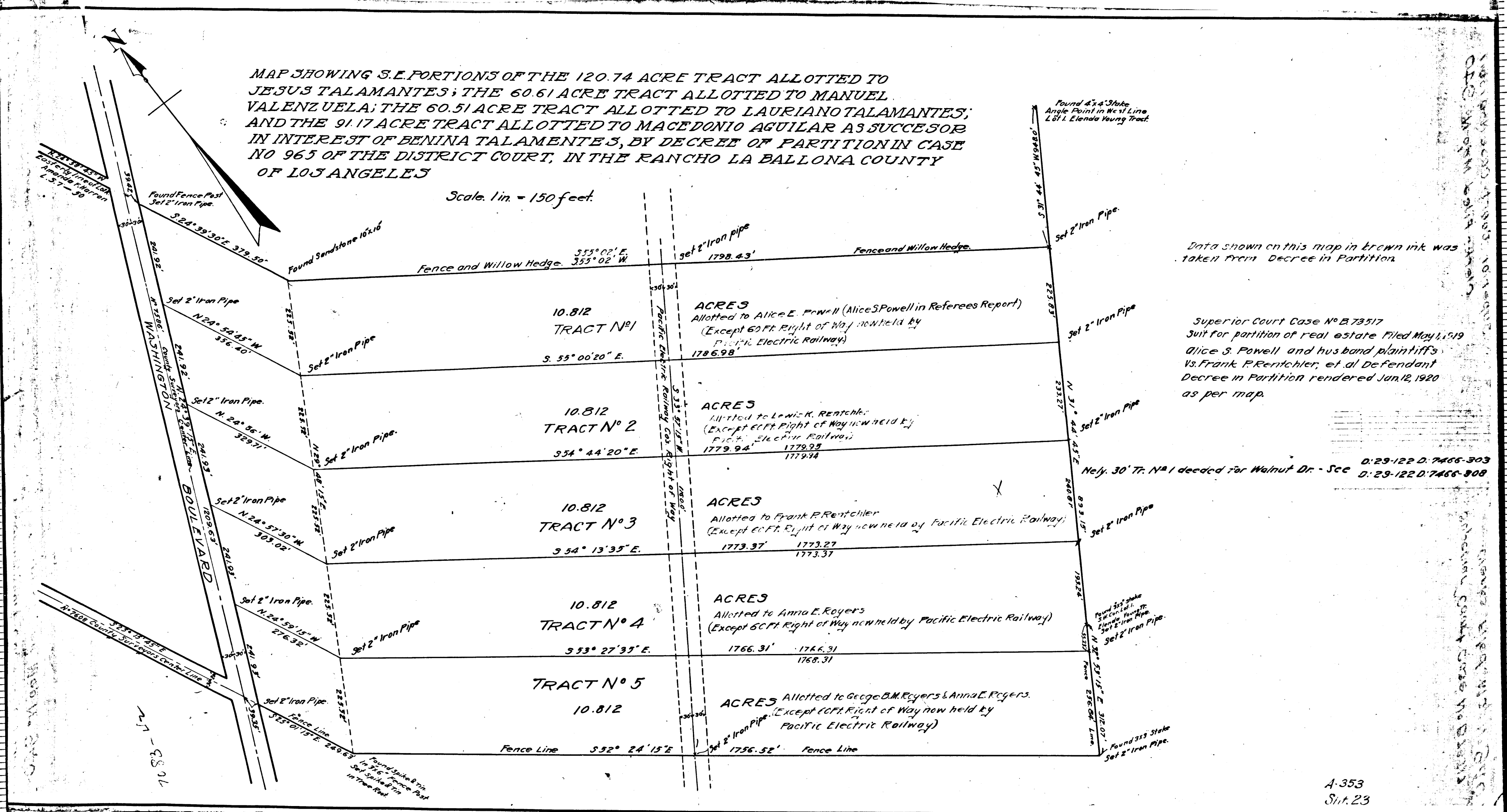


MAP SHOWING S.E. PORTIONS OF THE 120.74 ACRE TRACT ALLOTTED TO JESUS TALAMANTES; THE 60.61 ACRE TRACT ALLOTTED TO MANUEL VALENZUELA; THE 60.51 ACRE TRACT ALLOTTED TO LAURIANO TALAMANTES; AND THE 91.17 ACRE TRACT ALLOTTED TO MACEDONIO AGUILAR AS SUCCESSOR IN INTEREST OF BENINA TALAMANTES, BY DECREE OF PARTITION IN CASE NO 965 OF THE DISTRICT COURT, IN THE RANCHO LA BALLONA COUNTY OF LOS ANGELES

Scale: 1 in. = 150 feet.



Data shown on this map in brown ink was taken from Decree in Partition.

Superior Court Case No B.73517
 Suit for partition of real estate Filed May 1, 1919
 Alice S. Powell and husband plaintiffs
 Vs. Frank R. Rentschler, et al Defendant
 Decree in Partition rendered Jun. 12, 1920
 as per map.

Nely. 30' Tr. N°1 decided for Walnut Dr. - See D: 29-122 D: 7466-303
 D: 29-122 D: 7466-808

A-353
 Sit. 23

C.F. 940 -

957

VEMCO PASADENA, CAL.

50TH

101N

VEMCO PASADENA, CAL.

957