

MAP
 SHOWING THE LAND TO BE CONDEMNED
 FOR THE WIDENING OF
SERRANO AVENUE
 BETWEEN
HOLLYWOOD BOULEVARD
 AND THE NORTHERLY LINE OF
LOT 46, WEST PORTION OF THE LICK TRACT, LOS FELIS RO.
 IN THE
CITY OF LOS ANGELES, CAL.

In accordance with Ordinances Nos 39655 and 39851 (New Series)
 JOHN A. GRIFFIN City Engineer - March 1920
 Scale 50 feet to 1 inch

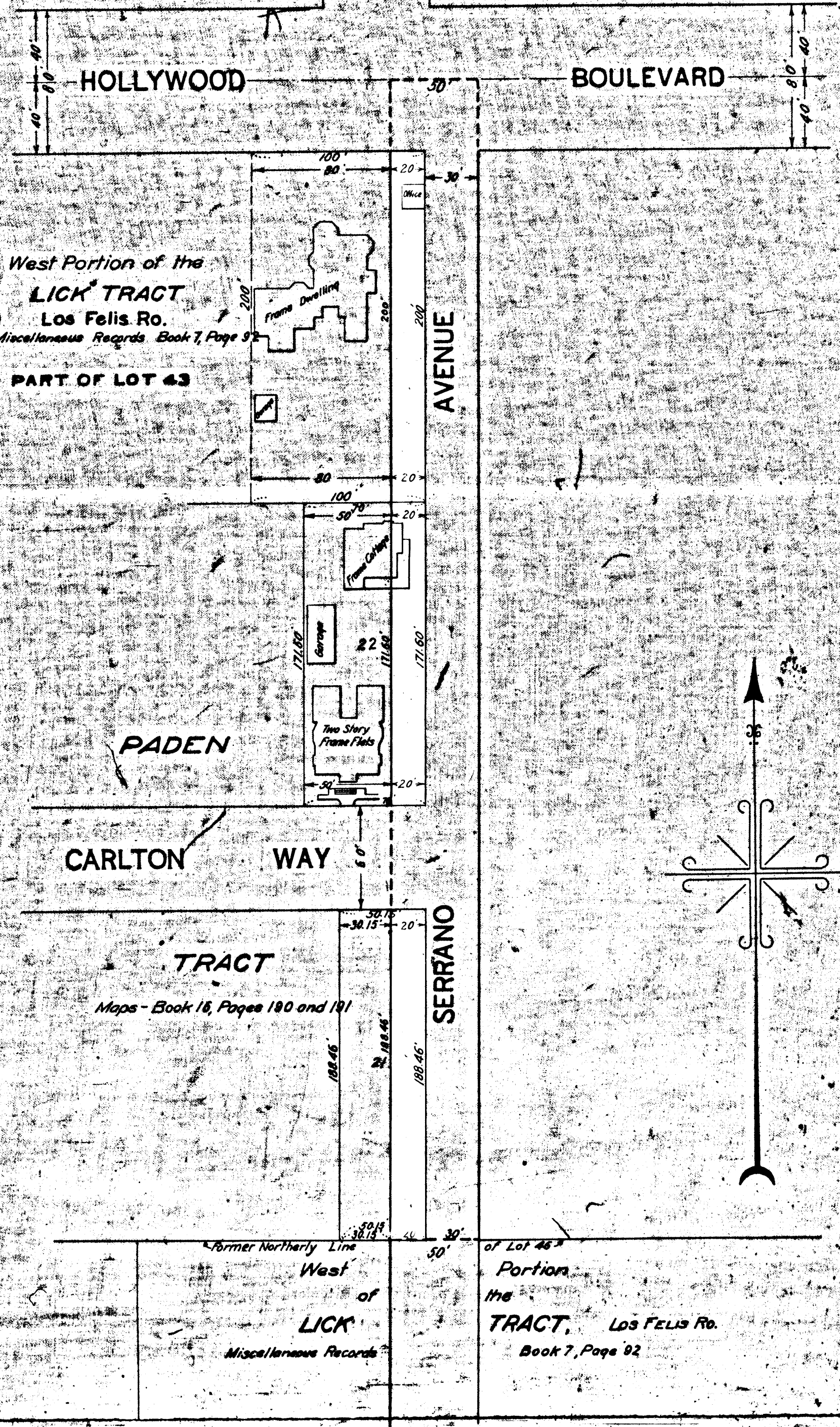
12-17-19 76225
 39,655
 39,851

NOTE - Land to be condemned shown colored red.
 Dotted lines and figures show where the holdings differ from
 the recorded subdivisions.

Superior Court Case No. B-81689
 Suit for Condemnation
 Filed April 5th 1920
 City of Los Angeles, Plff.
 Vs
 AVONIA DUNCAN, ROTHWELL, et al. Plffs.

Interlocutory decree rendered February 4th 1921
 Pending May 13th 1921

Final Judgement Sept. 27th 1921
 D. 31-155 O.P. 480-396



12-17-19
 39,655
 39,851