

Superior Court Case No B. 82568

Suit for Condemnation

Filed May 1, 1920

City of Glendale, Plaintiff

Vs.

Harrington Brown et al. Def

Pending April 13th 1921

Pending Mar 11, 1922

Interlocutory Decree Dec. 22nd 1922

Final Order of Condemnation Dec. 4th 1923

D. 44-127 O. R. 4339-309

MAP SHOWING

ASSESSMENT DISTRICT

FOR LAYING OUT AND OPENING OF KENILWORTH AVE. FROM NORTH LINE OF RIVERDALE DRIVE TO SOUTH LINE OF VINE ST. IN THE CITY OF GLENDALE CALIFORNIA.

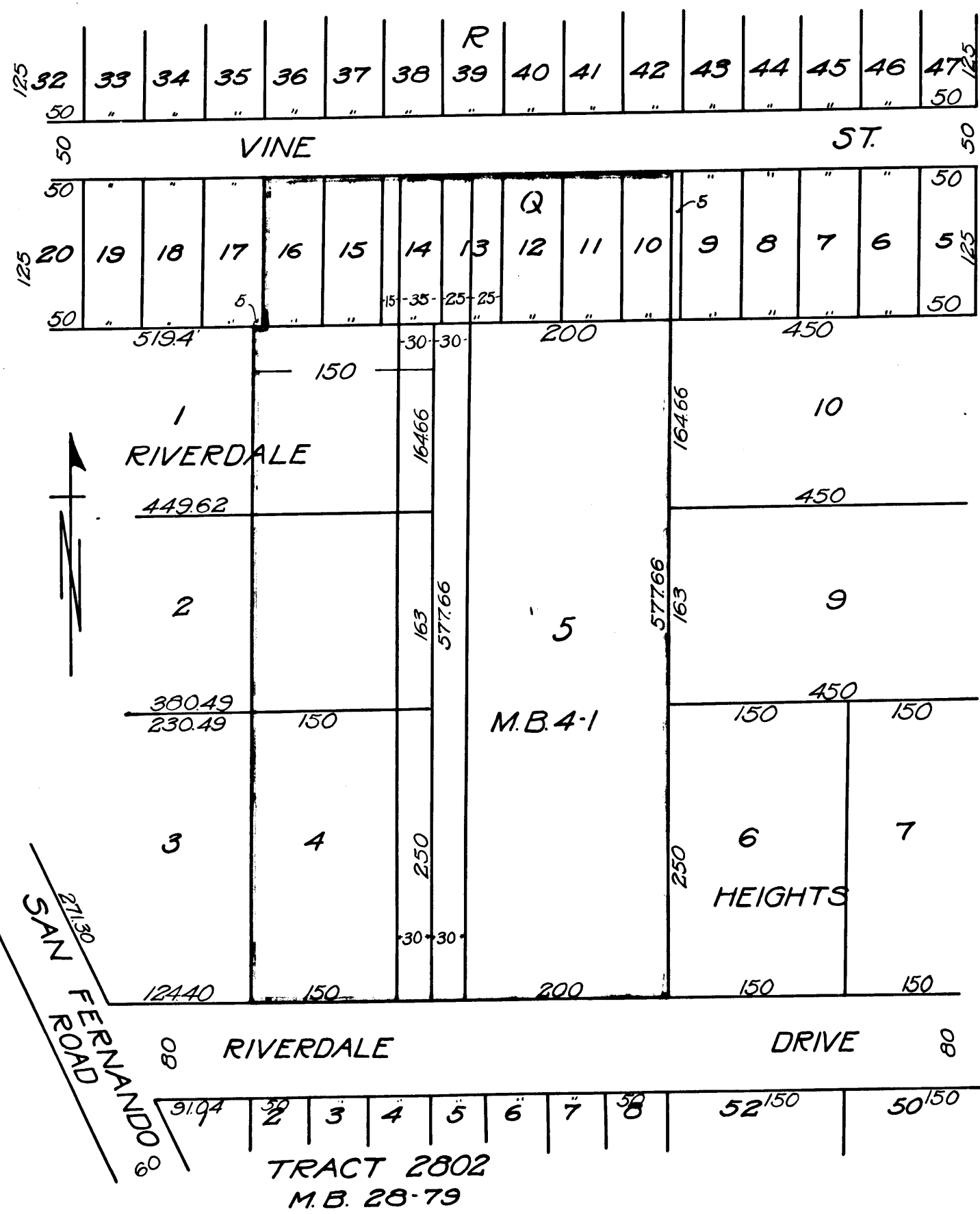
SCALE 1"=100'

FEB 5, 1920

S. 40

YELLOW TINTING SHOWS PARCEL OF LAND BEING CONDEMNED
RED TINTING SHOWS BOUNDARIES OF DISTRICT TO BE ASSESSED

GLENDALE VALLEY VIEW TRACT



TRACT 2802
M.B. 28-79

Exhibit C

C.F. 946

Superior Court Case No B. 82568

City of Glendale, Plaintiff