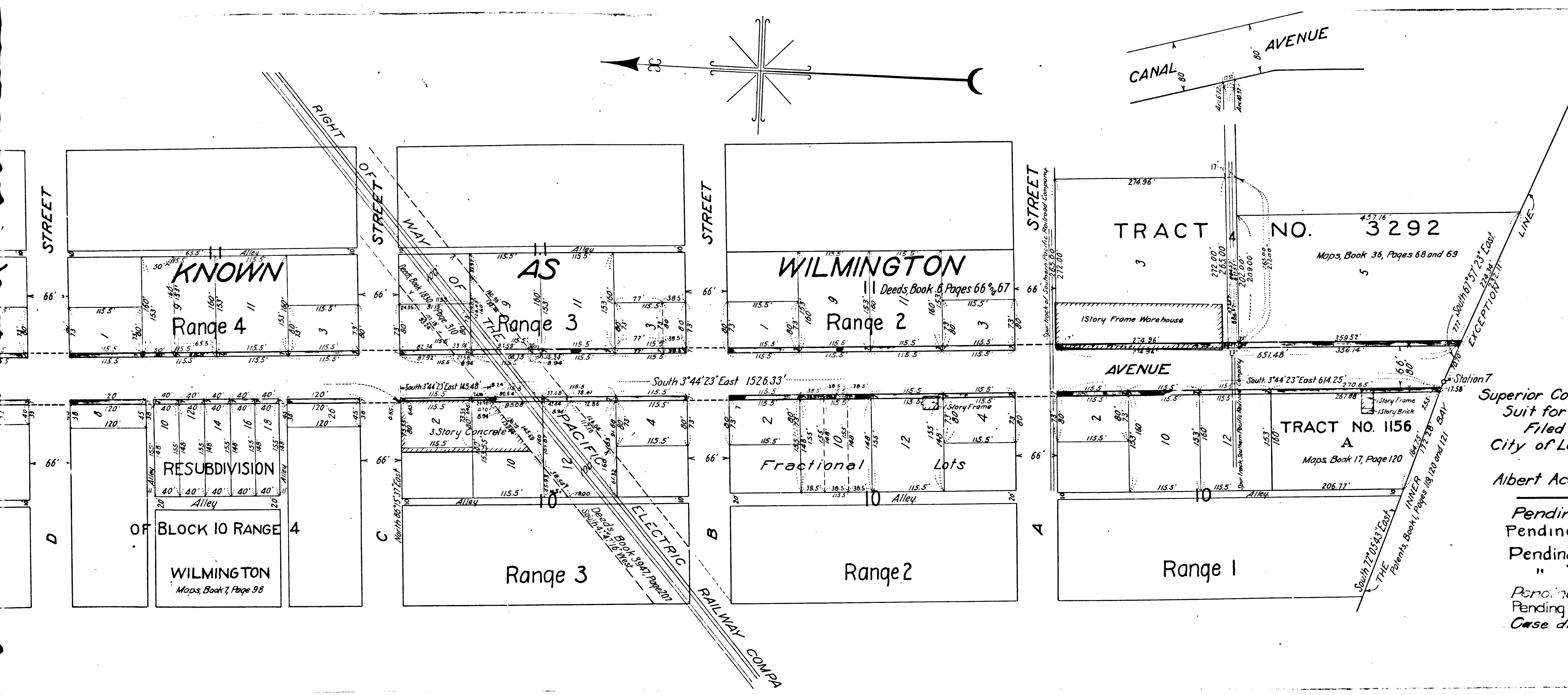
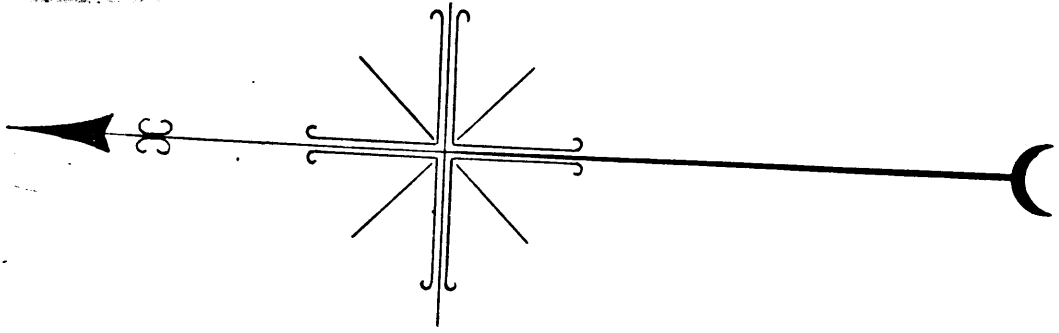


C.F. 953 -



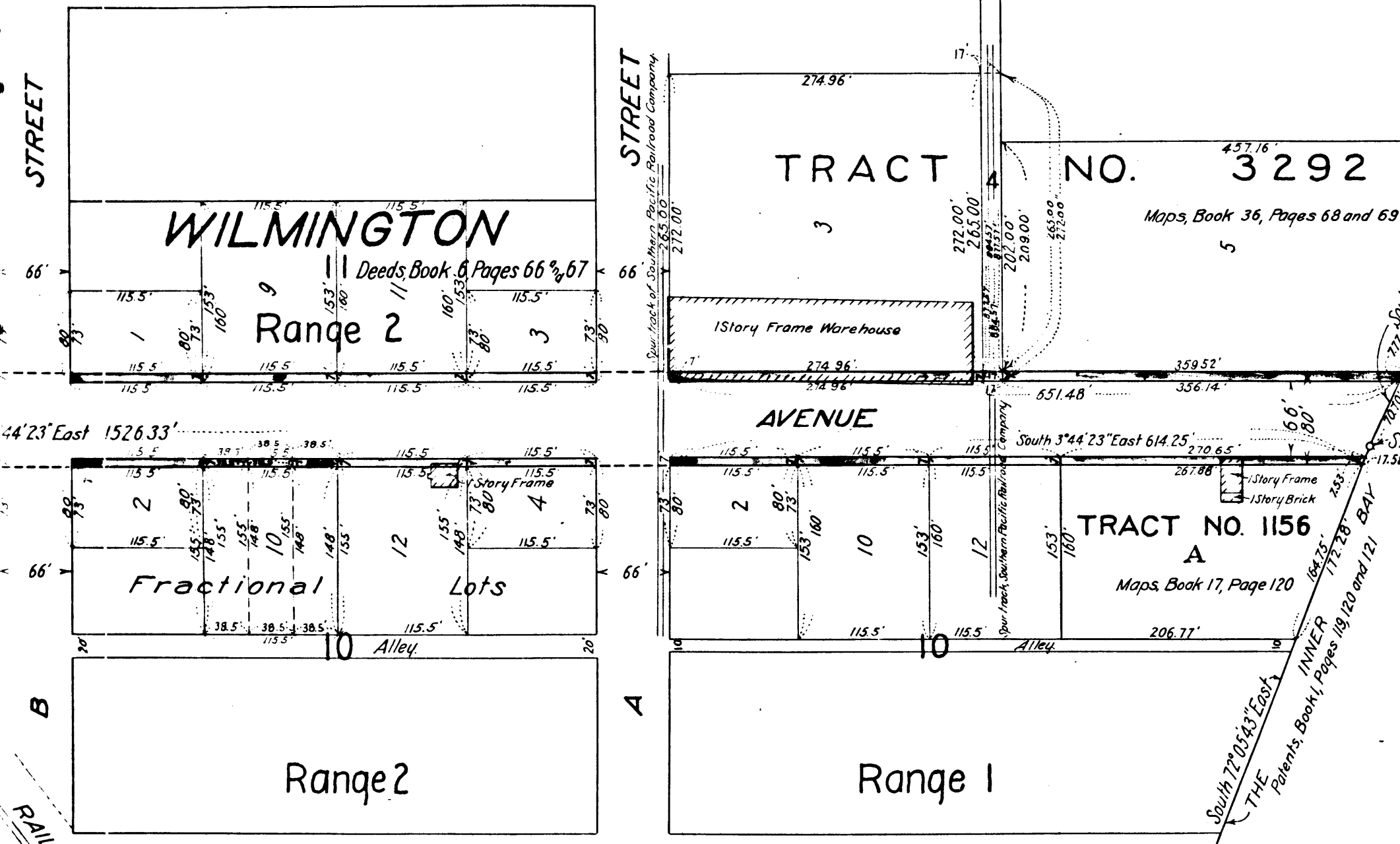
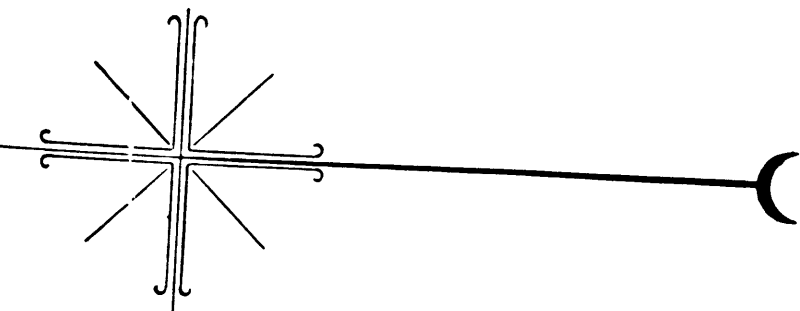
AND A PO

Superior Court Case No. B. 85038
 Suit for Condemnation
 Filed Aug. 6th 1920
 City of Los Angeles, Pltff.
 Vs
 Albert Acosta, et al. Def.

Pending May 14th 1921
 Pending Mar. 11, 1922
 Pending May 10th 1924
 " Feb. 18th 1925
 Pending Mar. 1, 1926
 Pending Apr. 1, 1927 - Feb. 28th 1928
 Case dismissed July 27th 1928

2

C.F. 953 -



MAP
 SHOWING THE LAND TO BE CONDEMNED
 FOR THE WIDENING OF
FRIES AVENUE
 BETWEEN
ANAHEIM STREET

AND A POINT SIX HUNDRED FIFTY-ONE AND FORTY-EIGHT HUNDREDTHS FEET
 SOUTHERLY OF THE SOUTHERLY LINE OF A STREET
 IN THE

CITY OF LOS ANGELES, CAL.

in accordance with Ordinances Nos. 39757 and 40094 (New Series)

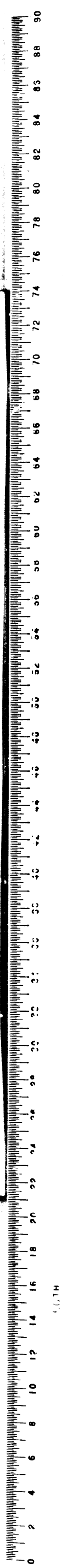
JOHN A. GRIFFIN, CITY ENGINEER. MAY, 1920.
 Scale, 1 Inch = 100 Feet.

NOTE - Land to be condemned shown colored red.
 Broken lines and figures show where the holdings
 differ from the recorded subdivisions.

Superior Court Case No. B. 85038
 Suit for Condemnation
 Filed Aug 6th 1920
 City of Los Angeles, Plff.
 Vs
 Albert Acosta, et al. Def.
 Pending May 14th 1921
 Pending Mar. 11, 1922
 Pending May 10th 1924
 " Feb. 18th 1925
 Pending Mar. 1, 1926
 Pending Apr. 1, 1927 - Feb. 28th 1928
 Case dismissed July 27th 1928

RAILWAY COMPANY

3
 C.F. 953 -



VENICO
 REPRODUCED

957

10111