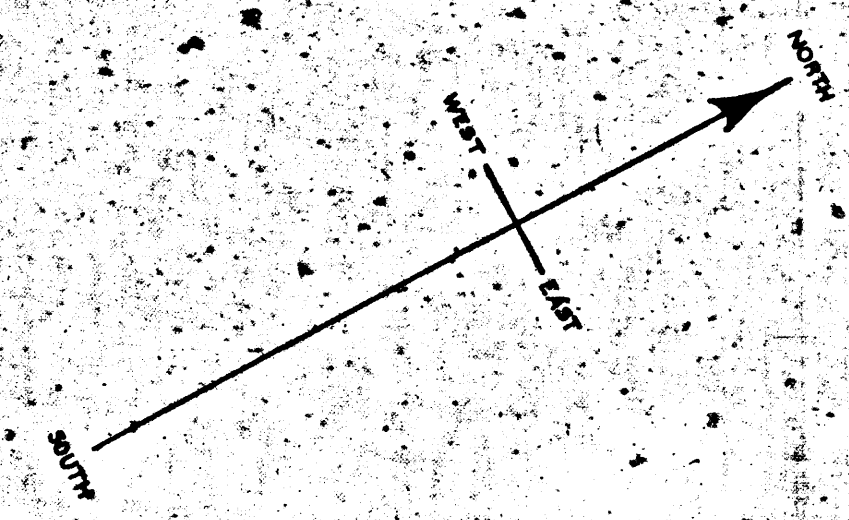


V-1011

RETURN TO CITY ENGINEER'S OFFICE
CITY OF LOS ANGELES
PROPERTY OF THE

V-1013



MAP
SHOWING THE LAND TO BE CONDEMNED FOR THE
WIDENING OF
GRAND VIEW STREET
BETWEEN
SEVENTH STREET AND EIGHTH STREET
IN THE
CITY OF LOS ANGELES, CALIF.
IN ACCORDANCE WITH ORDINANCES NOS. 40718 AND 41026 (NEW SERIES.)
JOHN A. GRIFFIN, CITY ENGINEER. DECEMBER, 1920.
SCALE: 1 INCH = 50 FEET.

NOTE:-
Land to be condemned shown colored red.
Superior Court Case No. B. 89777
Suit for Condemnation
Filed Jan 21st 1921
City of Los Angeles, Plaintiff
Vs.
A. P. Cross, et al. Def.
Pending May 16th 1921
Pending Apr 11, 1922
Pending May 10th 1924
Interlocutory Judgment 7-17-24
Pending Feb 18th 1925

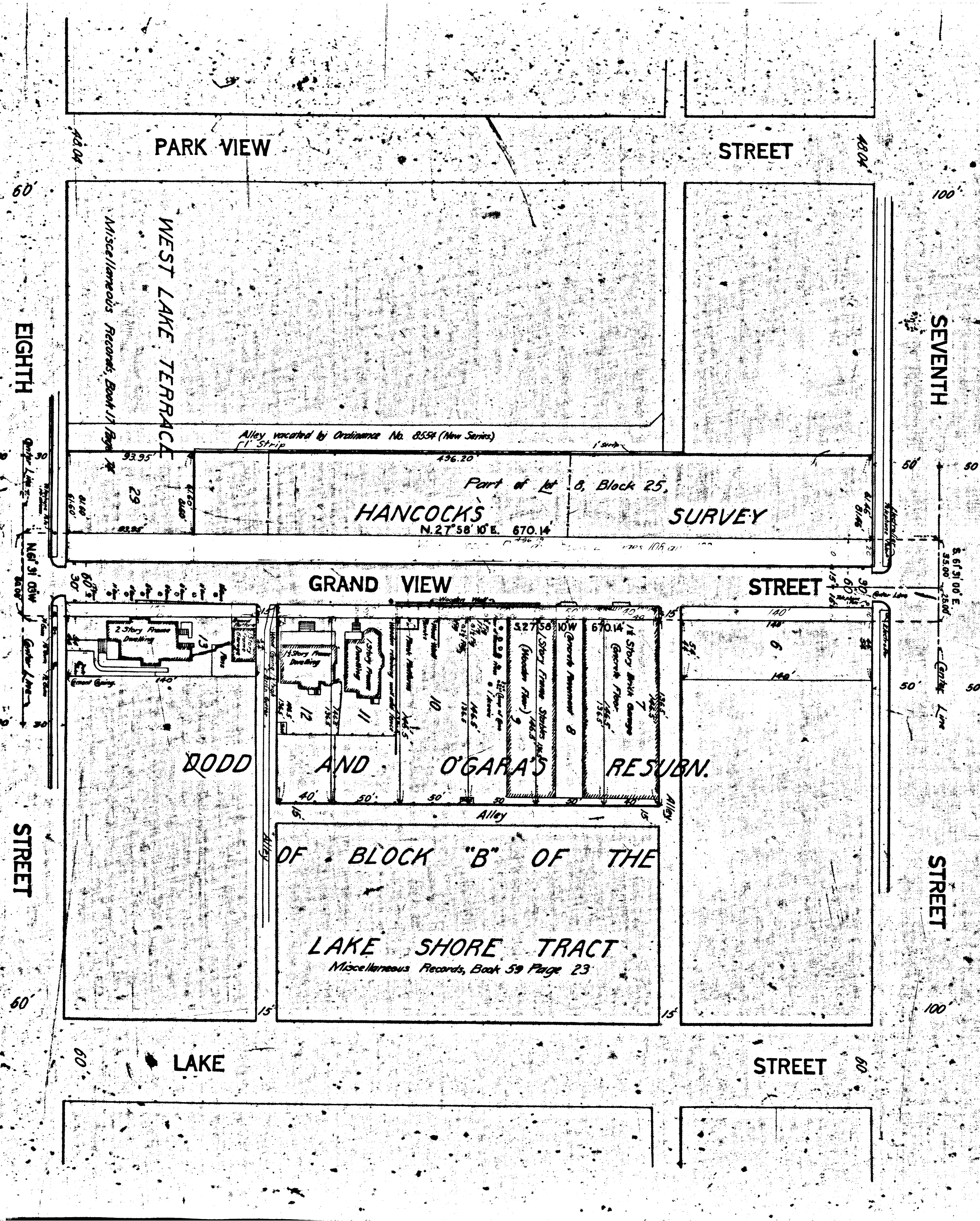
2-25-20
40718
41026

77060

6478

D. A. J. O. R. 3625-302

A-1077



HT NO YTTAON
CITY OF LOS ANGELES