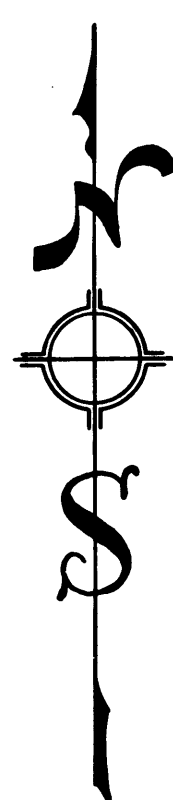
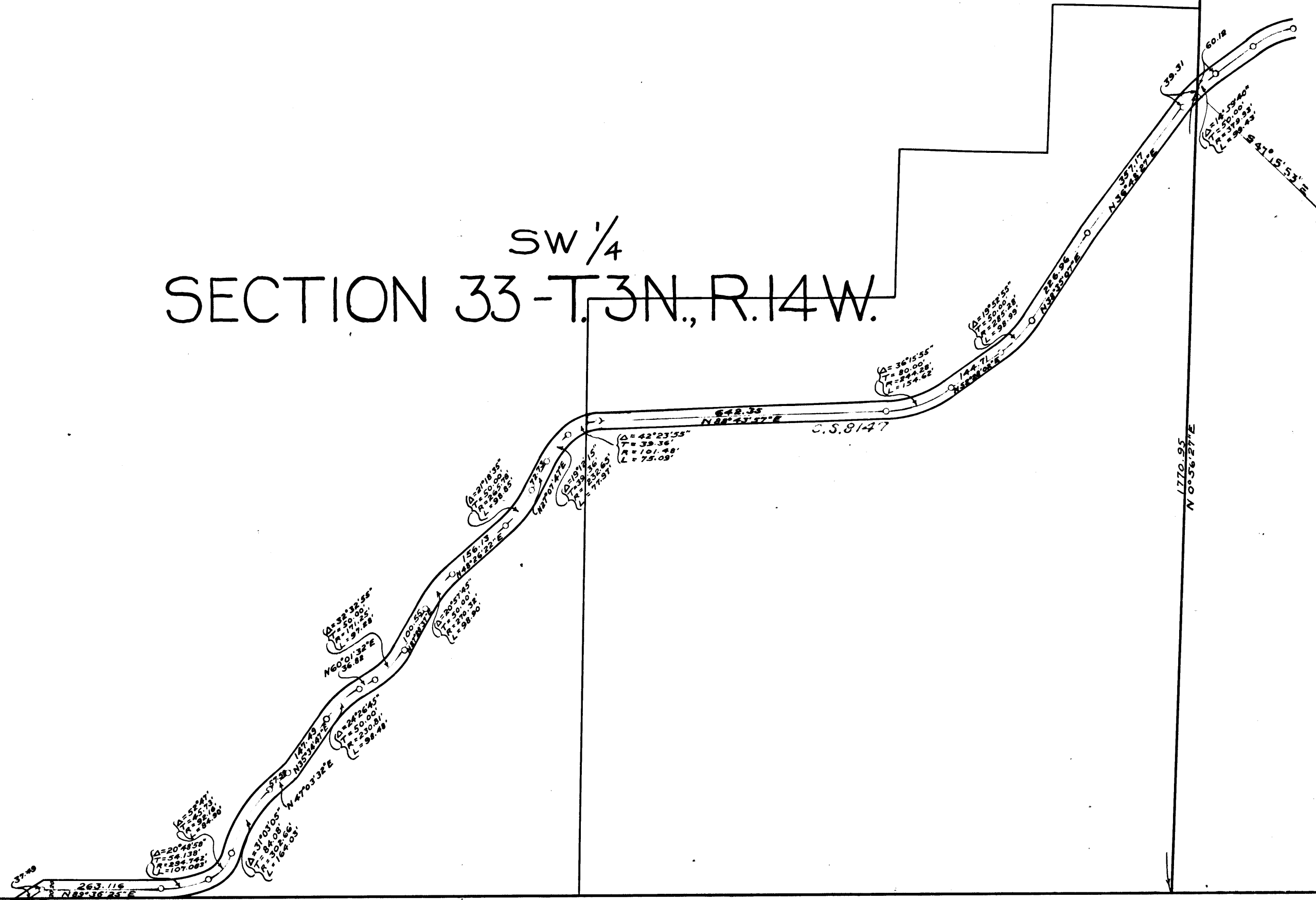


SW 1/4  
SECTION 33-T.3N., R.14W.



MAP  
SHOWING PORTIONS  
OF  
LITTLE TUJUNGA ROAD  
TO BE CONDEMNED

DEC. 1920  
SCALE: 1" = 200'

PORTIONS TO BE CONDEMNED COLORED RED

C.F. 964 -



Superior Court Case No. B.90411  
 Suit for Condemnation  
 Filed Feb. 10<sup>th</sup> 1921  
 County of Los Angeles Pltff.  
 Vs  
 John Zens, et. al. Def.

Plaintiff authorized to take immediate  
 possession and use of right of  
 way Feb. 10<sup>th</sup> 1921

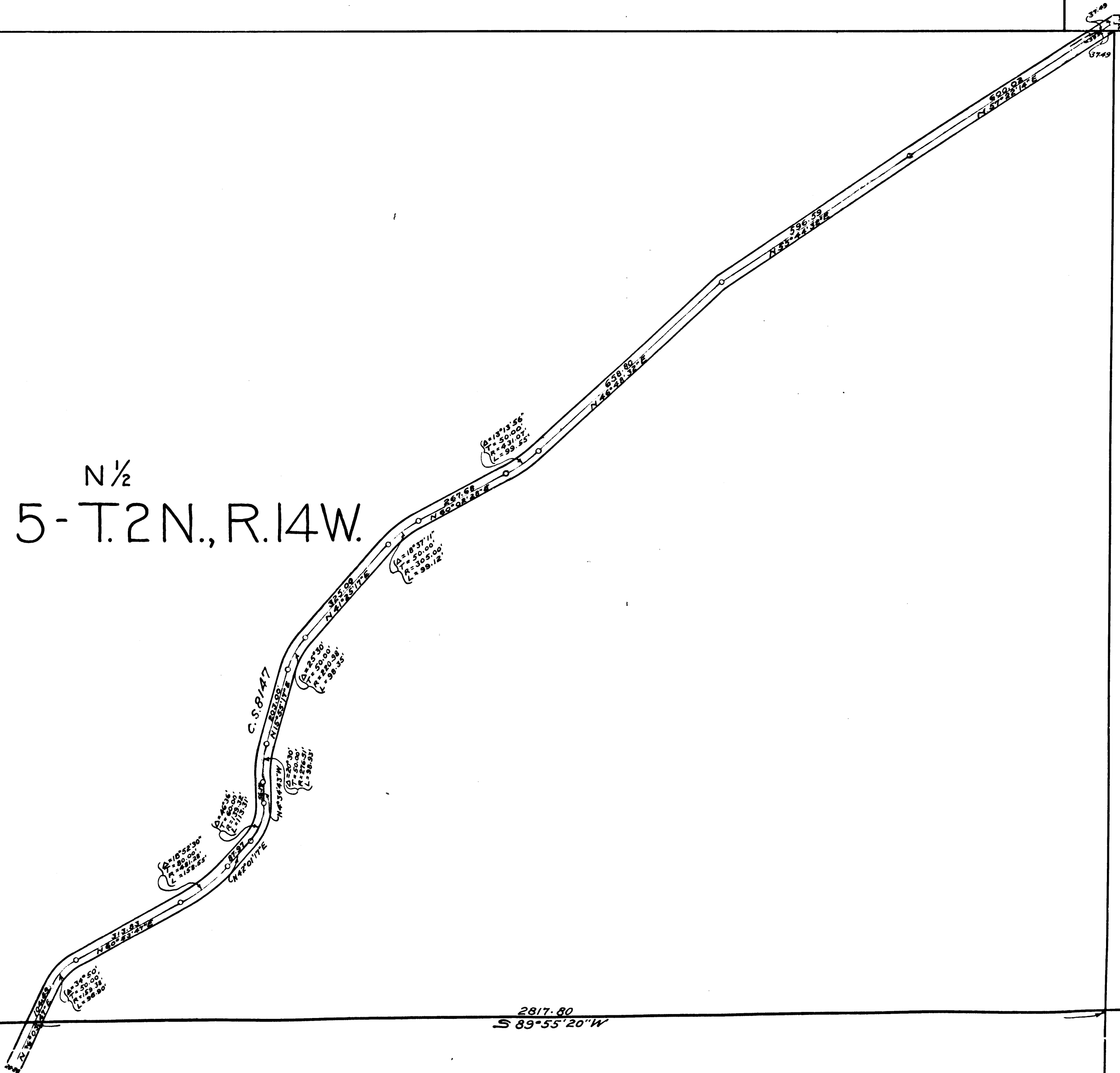
Pending April 23<sup>rd</sup> 1921  
 Pending April 11, 1922

Final judgement in favor of Plt'ff. as per  
 map, rendered January 2<sup>nd</sup>, 1923.

D:34-230 Docket Book 542-47  
 OR.1785-132.

N 1/2  
 SECTION 5 - T.2N., R.14W.

C.F. 964  
 2



2817.80  
 S 89° 55' 20\"/>