

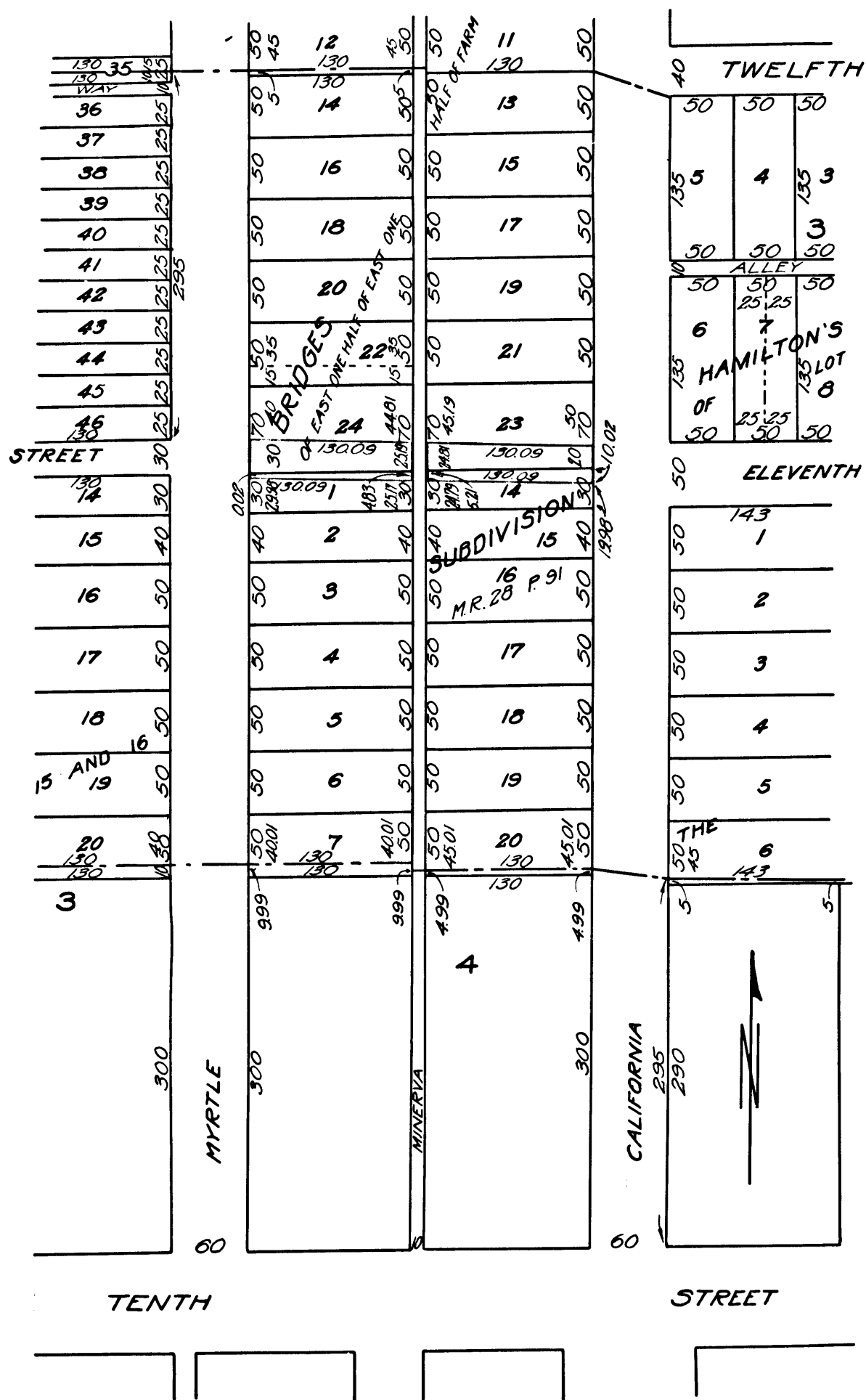
Superior Court Case No B.90479
 Suit for Condemnation
 Filed Feb. 14th 1921
 City of Long Beach, Pltff
 Vs.
 Inez May Long et. al. Def.

Pending April 25th 1921
 Interlocutory Judgement Rendered May 12, 1921
 Pending Feb. 25th 1922

Final judgement in favor of Pltff as per
 map, rendered March 13th, 1922.

D:33-6 O.R. 1025-106

Exhibit C.



C.F. 965

Sh. 30