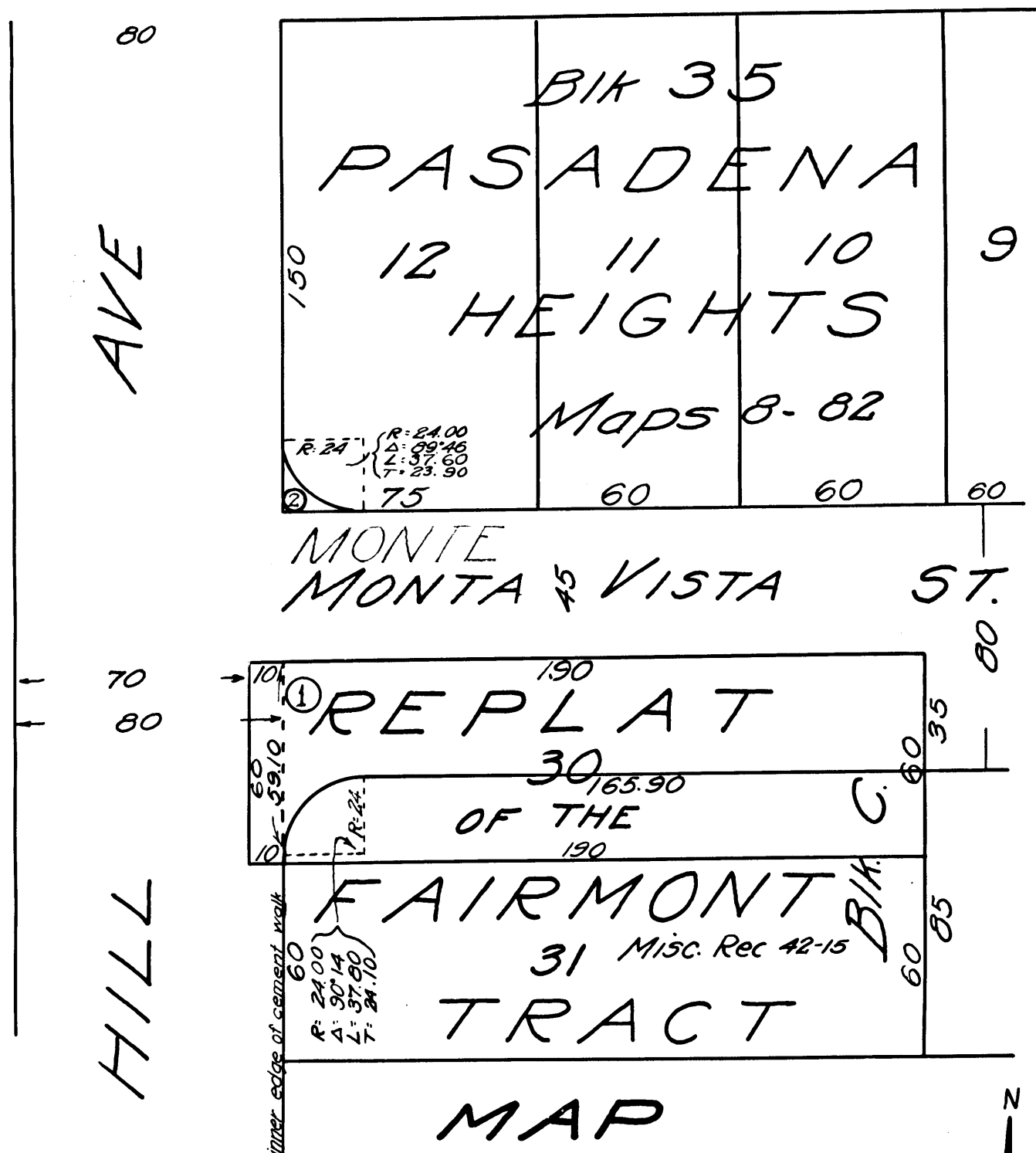


Superior Court Case No. B.91142
 Suit for Condemnation
 Filed Mar. 7th 1921
 City of Pasadena, Pltff.
 Vs
 Thomas Smith, et. al. Def.
 Pending April 28th 1921
 Pending Apr. 11, 22.

Final judgement in favor of Pltff. as per
 map, rendered June 23rd, 1922.

D:33-42 O.R. 1140-321



MAP

SHOWING LAND SOUGHT TO BE
 CONDEMNED FOR THE OPENING OF
 MONTE VISTA STREET, BE-
 TWEEN HILL AVENUE AND THE EAST
 CITY BOUNDARY, IN THE MANNER
 CONTEMPLATED BY ORDINANCE No
 158 (PW) OF THE CITY OF PASADENA.

Pasadena, Calif. Edwin P. Dewey
 March - 1921 City Engineer
 Scale - 1" = 40'

Exhibit
 "C."

Note Shaded portion
 shows land sought to
 be condemned.

C.F. 966

Superior Court Case No. B.91142

see of Gombert's map