



50TH

VEMCO PASADENA, CAL.

757

11101



Superior Court Case No. B 91276
 Suit for Condemnation
 Filed Mar. 11th 1921
 City of Long Beach, Pltff.
 Vs.
 Annie Shiles et al. Def.

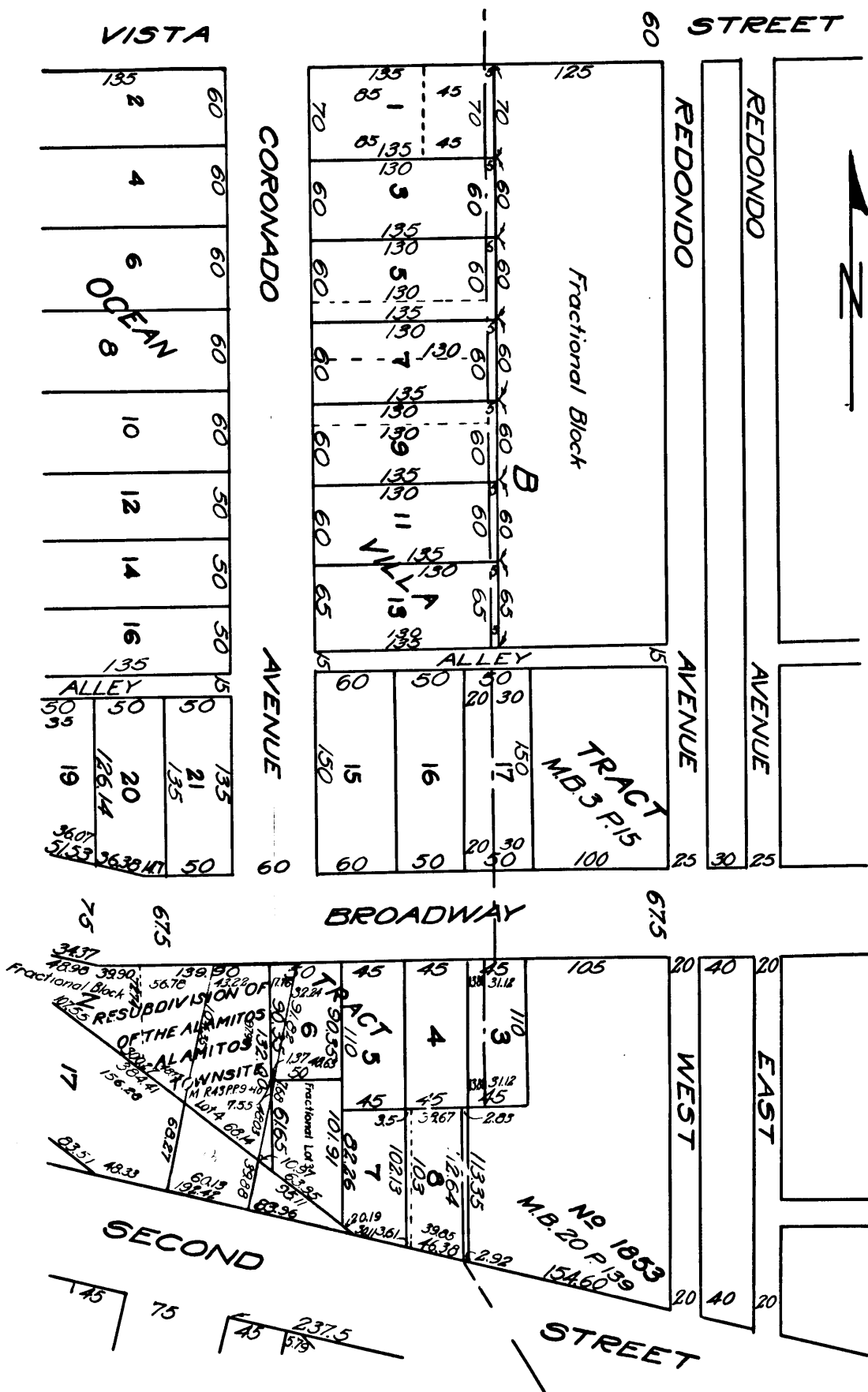
Pending April 28th 1921
 Interlocutory decree rendered 2-14-22

Final judgment in favor of Pltff. as per
 map, rendered November 24th, 1922.

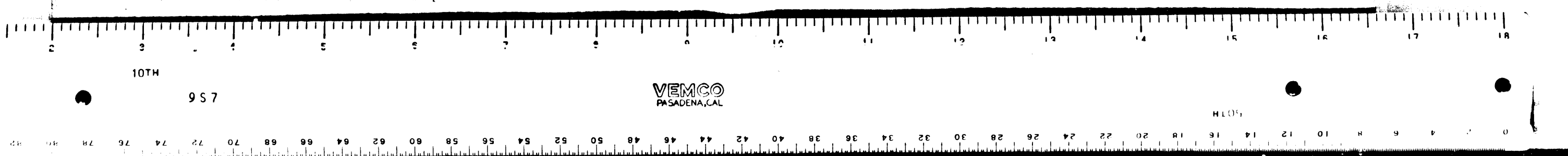
D:33-285 O.R. 1632-389

INDEX 30

Exhibit C.



C.F. 967



10TH

957

VEMCO PASADENA, CAL.

11101