

OSII-A

V-1150

MAP

SHOWING THE LAND TO BE CONDEMNED
 FOR THE OPENING OF AN
ALLEY
 FROM
FIFTEENTH STREET TO SIXTEENTH STREET
 BETWEEN
MAIN AND LOS ANGELES STREETS
 IN THE
CITY OF LOS ANGELES, CAL.

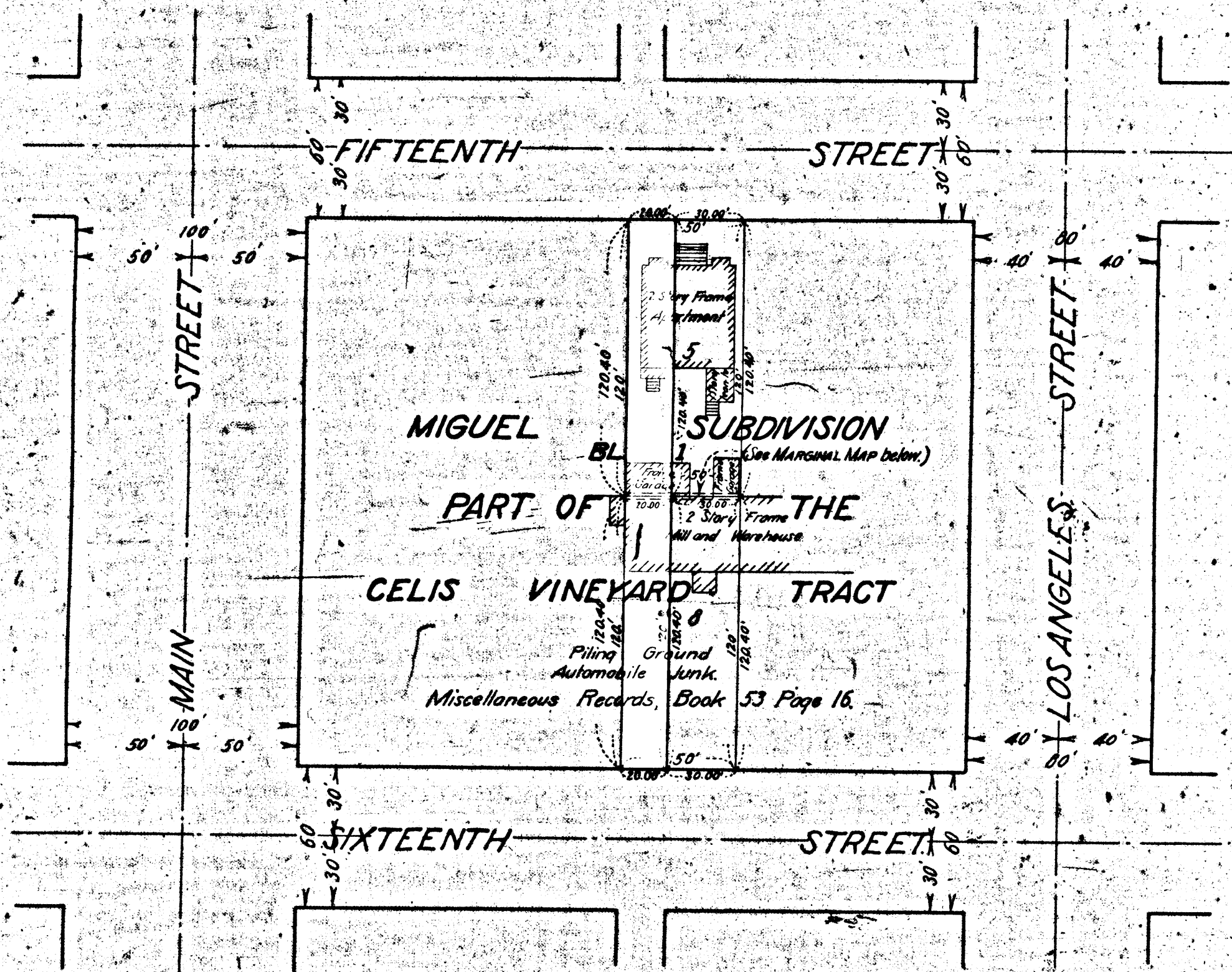
In accordance with Ordinances Nos. 41064 and 41423 (New Series)

JOHN A. GRIFFIN, CITY ENGINEER. MARCH 1921
 Scale, 1 Inch = 50 Feet

NOTE - Land to be condemned shown colored red.
 Dotted lines and figures show where the holdings
 differ from the recorded subdivisions.

3-2-20 79471
 41064
 41423

6480



SUPERIOR COURT CASE NO B95110

SUIT FOR CONDEMNATION

FILED JULY 5th, 1921

CITY OF L.A. PLTFF.

SAMUEL KIRSHENBAUM et al DEF.

PENDING - JULY 11th, 1921

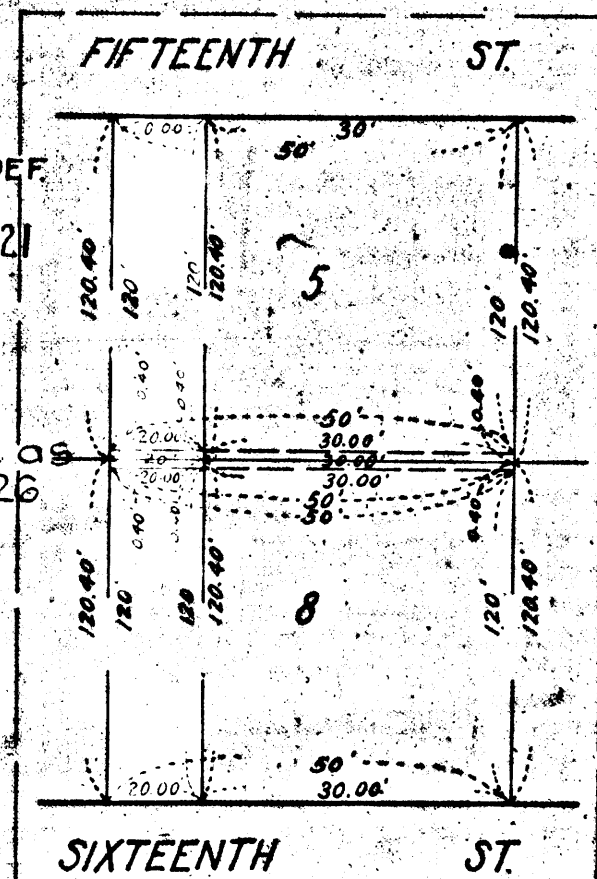
Pending Apr. 11, 1922

Pending May 10th, 1924

Pending Feb. 18th, 1925

Final Judgment in favor of Pltff as per map rendered March 9th, 1926

DIAM 23 ROR 5610-184



PROPERTY OF THE
 CITY OF LOS ANGELES
 OFFICE OF THE CITY ENGINEER

OSII-A

MARGINAL MAP

OSII-A