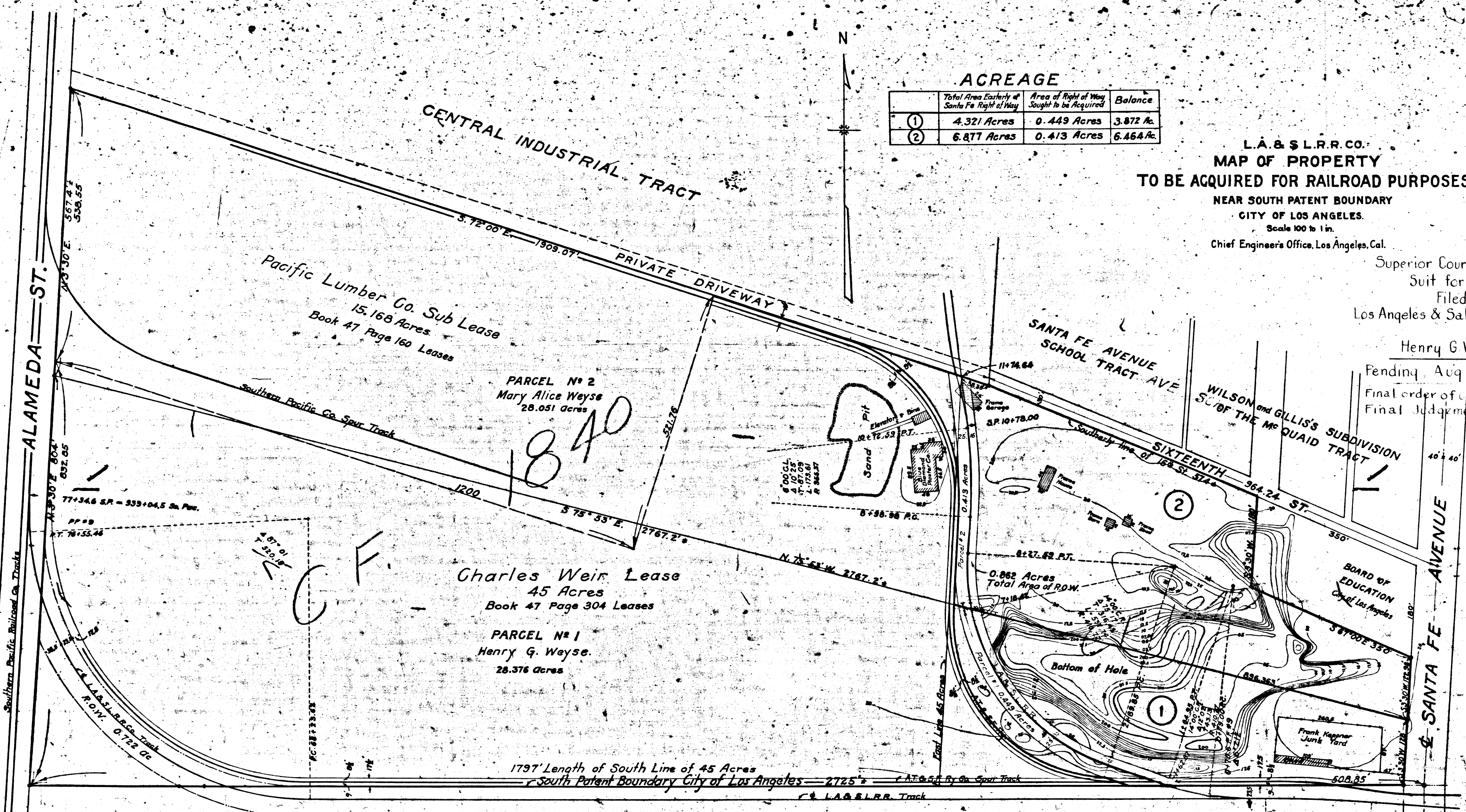


| | Total Area Easternly of Santa Fe Right of Way | Area of Right of Way Sought to be Acquired | Balance |
|---|---|--|-----------|
| ① | 4.321 Acres | 0.449 Acres | 3.872 Ac. |
| ② | 6.877 Acres | 0.413 Acres | 6.464 Ac. |

L.A. & S.F. R.R. CO.
MAP OF PROPERTY
TO BE ACQUIRED FOR RAILROAD PURPOSES
 NEAR SOUTH PATENT BOUNDARY
 CITY OF LOS ANGELES.
 Scale 100 to 1 in.
 Chief Engineer's Office, Los Angeles, Cal.

Superior Court Case No B 95801
 Suit for Condemnation
 Filed July 26, 1921
 Los Angeles & Salt Lake Railroad Co. et al.
 Vs
 Henry G. Weyse, et al., Def.
 Pending, Aug 1, 1921
 Final order of condemnation Dec 21, 1921
 Final Judgment Dec 21, 1921



CENTRAL INDUSTRIAL TRACT

Pacific Lumber Co. Sub Lease
 15.168 Acres
 Book 47 Page 160 Leases

PARCEL No 2
 Mary Alice Weyse
 28.051 Acres

Charles Weir Lease
 45 Acres
 Book 47 Page 304 Leases

PARCEL No 1
 Henry G. Weyse.
 28.376 Acres

SANTA FE AVENUE
 SCHOOL TRACT AVE

SIXTEENTH ST

SANTA FE AVENUE

WILSON and GILLIS'S SUBDIVISION
 SC OF THE McQUAID TRACT

BOARD OF
 EDUCATION
 City of Los Angeles

Frank Kappner
 Junk Yard

1797' Length of South Line of 45 Acres
 South Patent Boundary City of Los Angeles

ALAMEDA ST.

Southern Pacific Railroad Co. Tracks

L.A. & S.F. R.R. Track