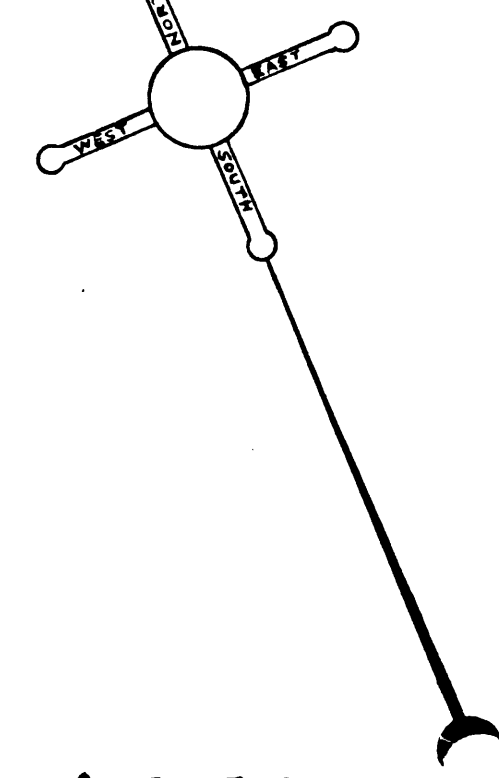


Assn
Sheet 1

Superior Court Case No. B96058
Suit for Condemnation
Filed Aug., 3rd 1921
City of Los Angeles, Plff.
Vs.
Title Insurance & Trust Co., Def.

Pending Aug., 9, 1921
Pending Apr. 11, 1922
Interlocutory Judgment rendered Apr. 18-1922
Final Judgment Nov. 30th 1923
D: 40-13-O.R. 2779-190



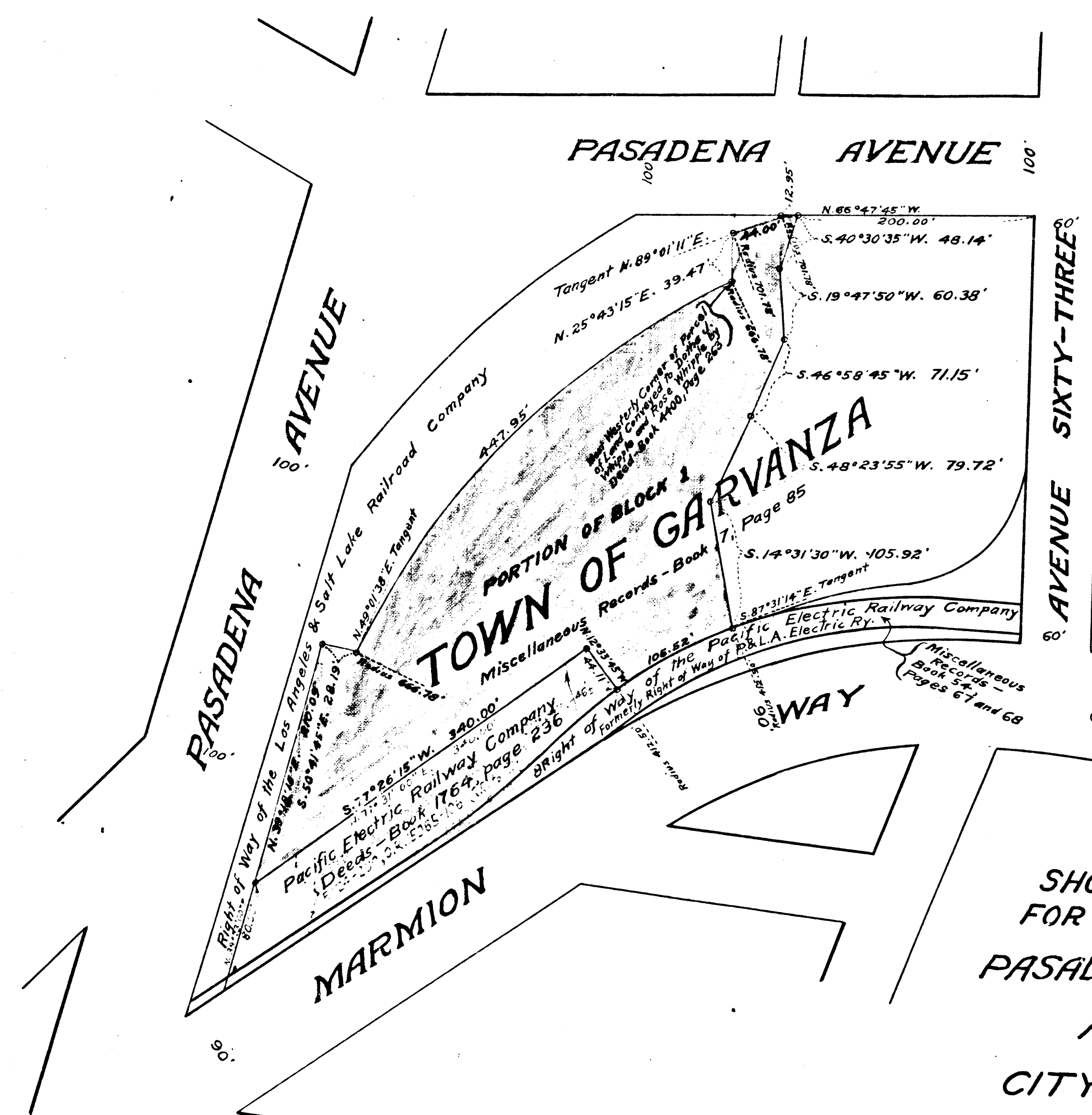
MAP
SHOWING LAND TO BE CONDEMNED
FOR PUBLIC PLAYGROUND PURPOSES
BETWEEN
PASADENA AVENUE, MARMION WAY
AND
AVENUE SIXTY-THREE
IN THE
CITY OF LOS ANGELES, CAL.

In accordance with Ordinances Nos. 41416 and 41867 (New Series)
John A. Griffin, City Engineer. July, 1921.

Scale 1 inch = 100 feet.

NOTE: - Land to be Condemned shown colored Red.

Sheet 1



VEMCO
PASADENA, CAL.

C.F. 975 -