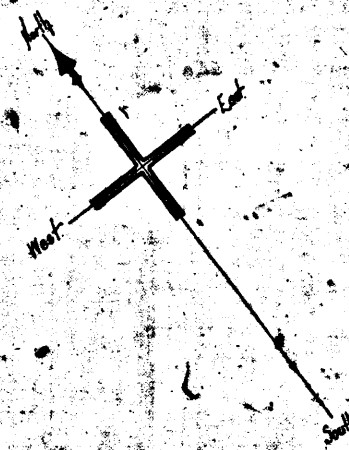


102-A

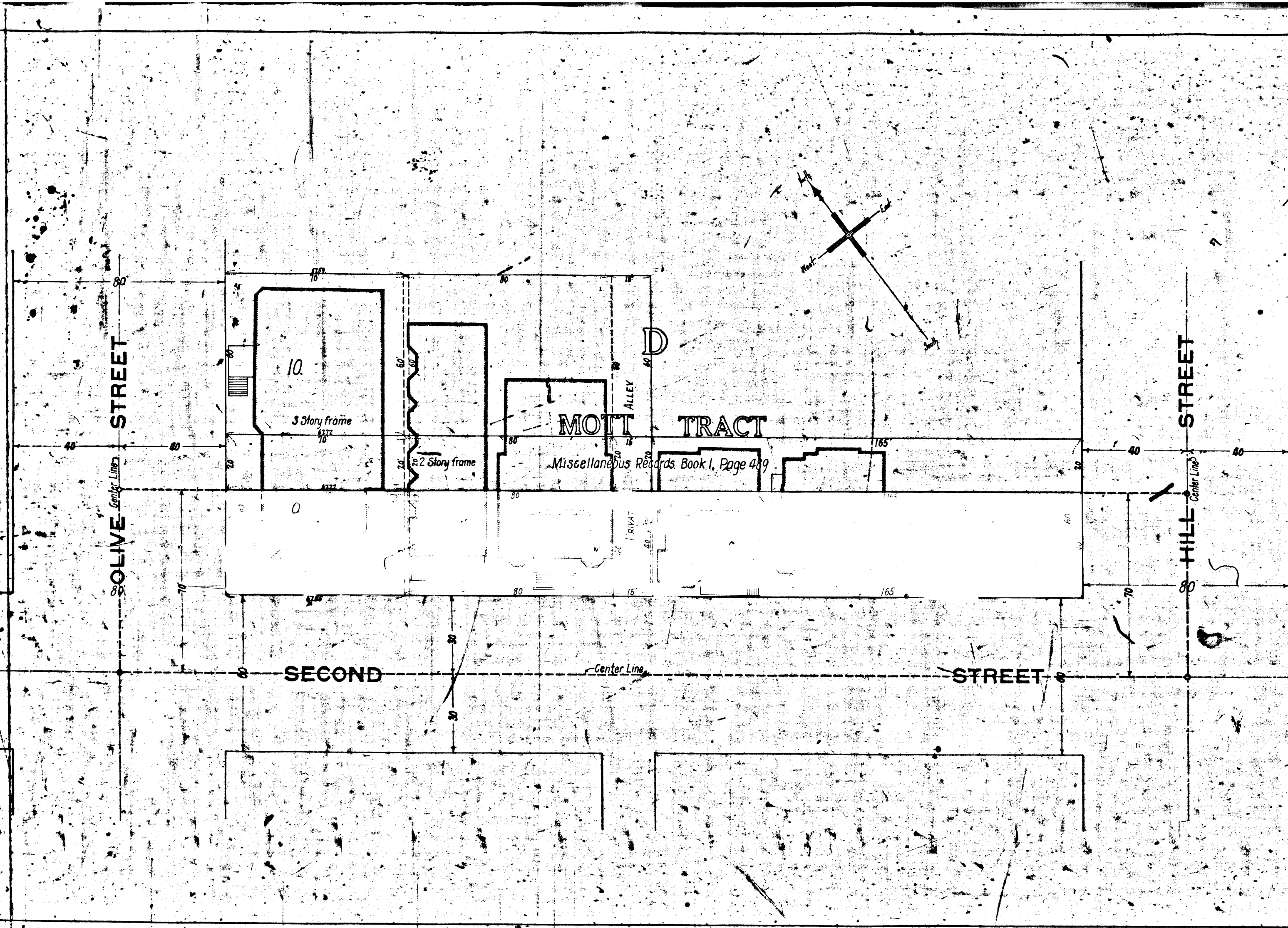
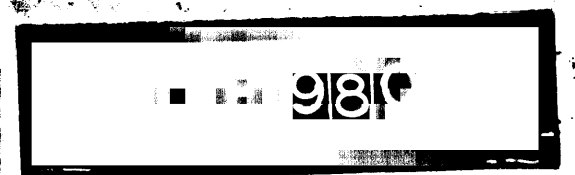
102-A

Superior Court Case No. B49121.
 Suit for Condemnation.
 Filed Mar. 28th 1917
 City of Los Angeles, Plaintiff
 Vs.
 Thomas Hughes et al. Deft.
 Final judgment in favor of Plaintiff per
 map rendered April 22nd 1921



MAP
 SHOWING THE
 LAND TO BE CONDEMNED
 FOR THE WIDENING OF
SECOND STREET
 BETWEEN
HILL STREET AND OLIVE STREET
 IN ACCORDANCE WITH ORDINANCE Nos. 35232 and 35985 (NEW SERIES)
 CITY OF LOS ANGELES, CALIFORNIA
 HOMER HAMLIN, City Engineer March 1917
 Scale; 1 inch = 20 feet

Note: Land to be condemned colored red
 Dotted lines and figures show the actual holdings
 where they differ from the recorded subdivision.
 D. 34, 970, R. 202-308



102-A

102-A