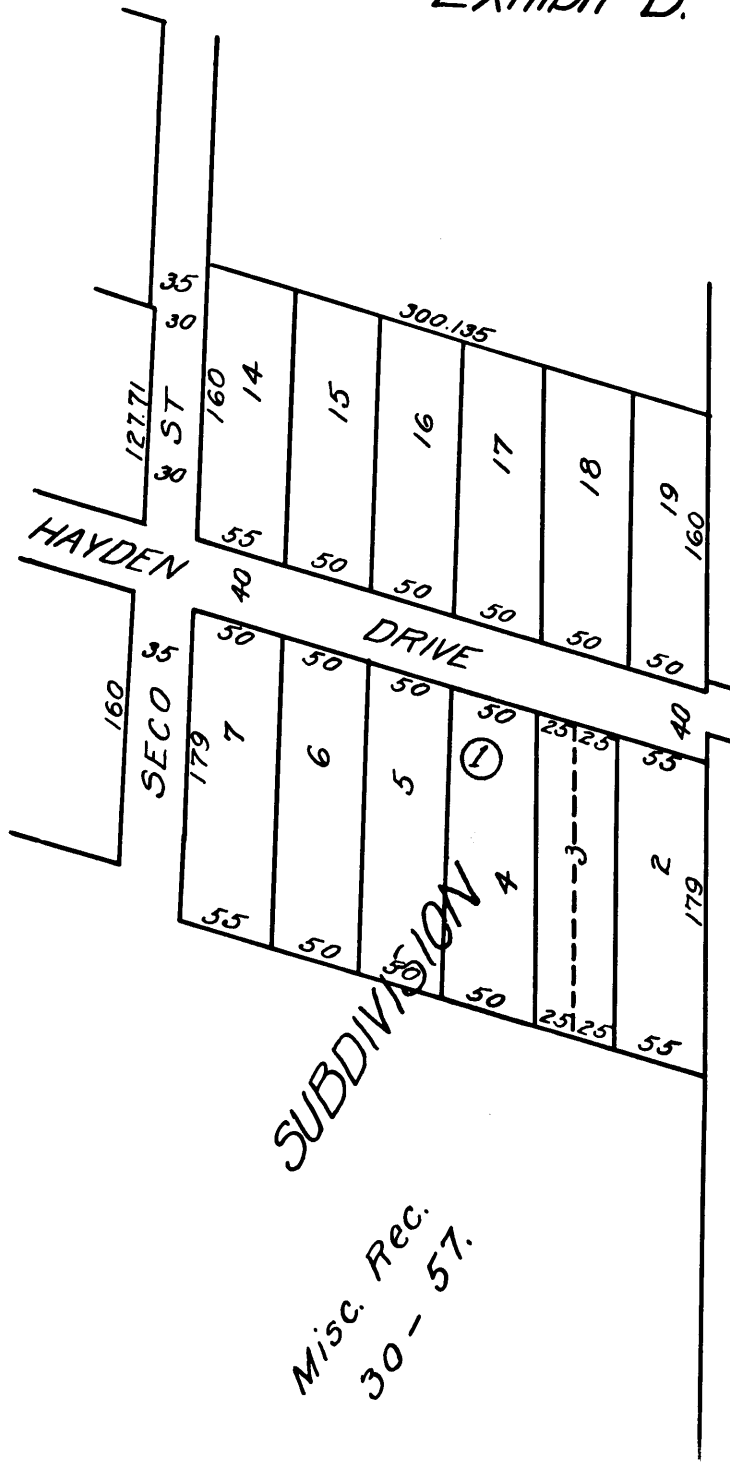


MAP.

Showing land sought to be condemned for Public Park purposes;  
all of said land being in Dontanvill's Subdivision in the City  
of Pasadena, County of Los Angeles, State of California.  
Pasadena, California,  
May-1921.  
Edwin P. Dewey,  
City Engineer.

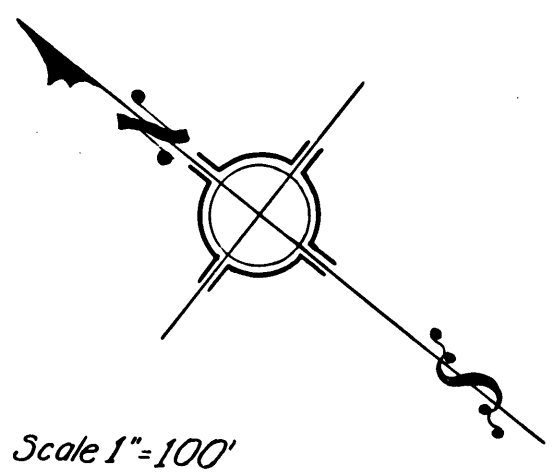
- Exhibit 'B' -

NOTE: The parcel of land sought to be con-  
demned is indicated by number inclosed by  
circle.



DONTANVILL'S  
SUBDIVISION

Misc. Rec.  
30 - 57.



Scale 1"=100'

DONTANVILL'S  
LOT-1

C.F. 981-

(For Public Park)  
Superior Court Case No. B98863  
Suit for Condemnation  
Filed Oct. 26<sup>th</sup> 1921  
City of Pasadena, Plaintiff.  
Vs.  
Conrad Schliesmayer et al Def.  
Pending Nov. 7<sup>th</sup> 1921  
Pending Apr. 11, 1922  
Final Judgment May 2<sup>nd</sup> 1924

