

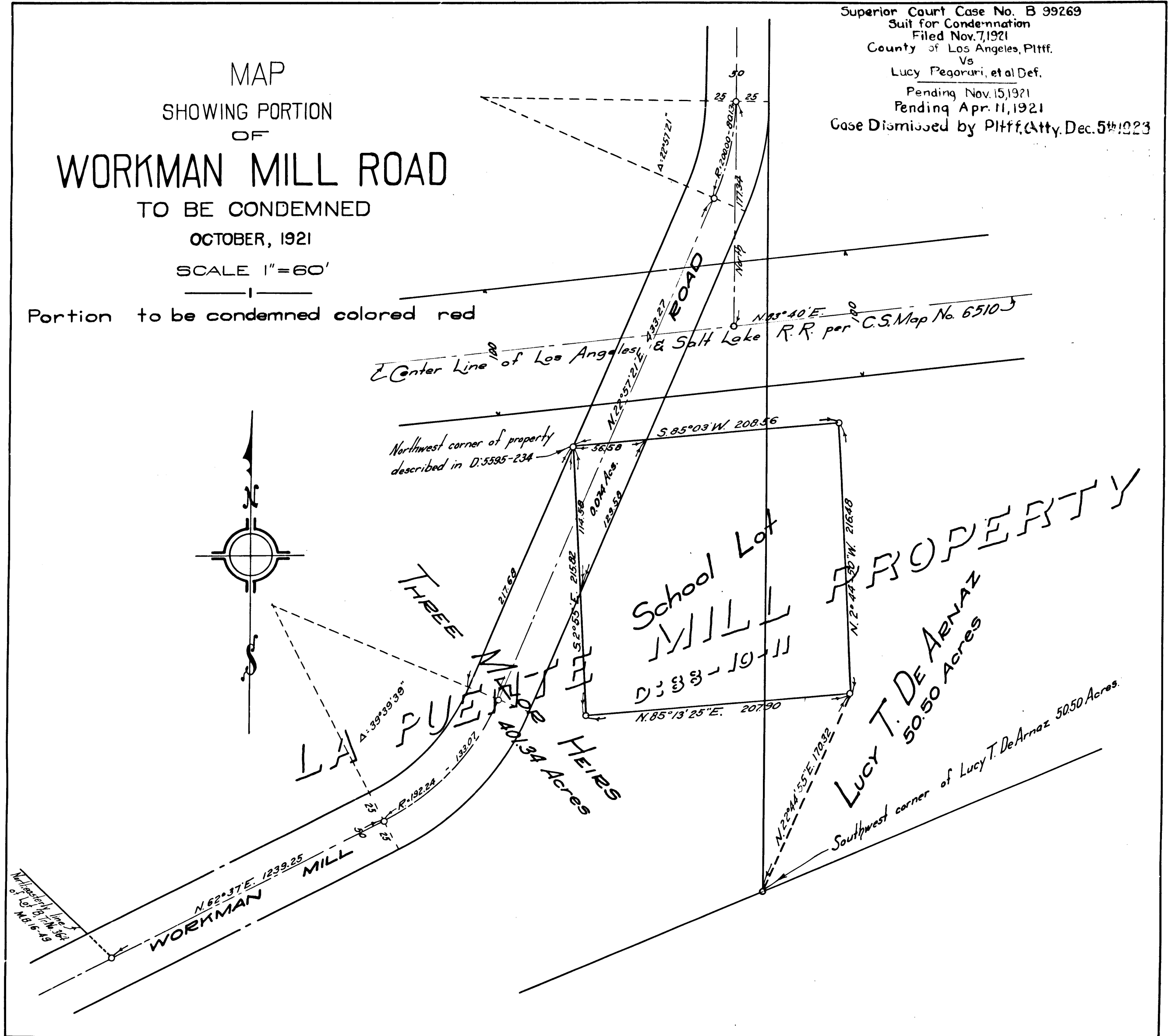
MAP
SHOWING PORTION
OF
WORKMAN MILL ROAD
TO BE CONDEMNED

OCTOBER, 1921

SCALE 1"=60'

Portion to be condemned colored red

Superior Court Case No. B 99269
Suit for Condemnation
Filed Nov. 7, 1921
County of Los Angeles, Pltff.
Vs
Lucy Pegaruri, et al Def.
Pending Nov. 15, 1921
Pending Apr. 11, 1921
Case Dismissed by Pltff. (Atty. Dec. 5, 1923)



C.F. 983 -