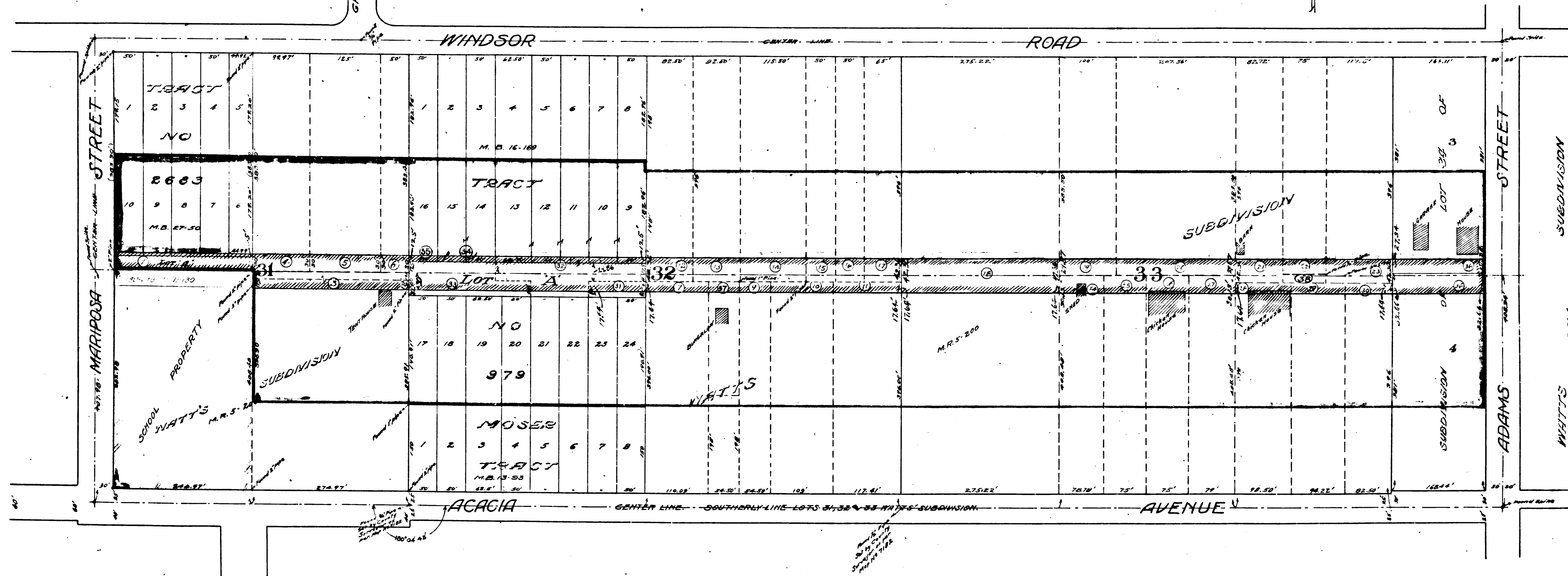


LEGEND  
 YELLOW TINTING SHOWS LAND TO BE CONDEMNED.  
 RED " " ASSESSMENT DISTRICT  
 GREEN " " SCHOOL PROPERTY.

MAP SHOWING LAND TO BE CONDEMNED  
 FOR THE  
 LAYING OUT AND OPENING OF  
**GARFIELD AVENUE**  
 FROM THE EASTERLY LINE OF MARIPOSA STREET TO  
 THE WESTERLY LINE OF ADAMS STREET, ALL WITHIN THE  
 CITY OF GLENDALE.  
 AND SHOWING THE DISTRICT TO BE ASSESSED TO  
 PAY THE COSTS AND EXPENSES THEREOF.  
 SCALE: 1 IN = 100 FT. C.L. HILL, CITY ENGINEER.  
 JANUARY, 1921

Superior Court Case No. B 99890  
 Suit for Condemnation  
 Filed Nov. 23, 1921  
 City of Glendale, Pltff.  
 Vs  
 W.A. Gibson, et al. Def.  
 Pending Dec. 12, 1921  
 Pending Apr. 11, 1922  
 Final Judgement in favor of Pltff. Rendered Jan. 15, 1924  
 D:74-124 O.R. 3315-367



C.F. 984 -