

MAP

Showing Lands sought to be condemned for Public Park purposes; all of said Lands being in the Dontanvill's Subdivision, in the City of Pasadena County of Los Angeles, State of California.

Pasadena California
May, 1921.

Edwin P. Dewey
City Engineer.

Index # 8

Case Complete

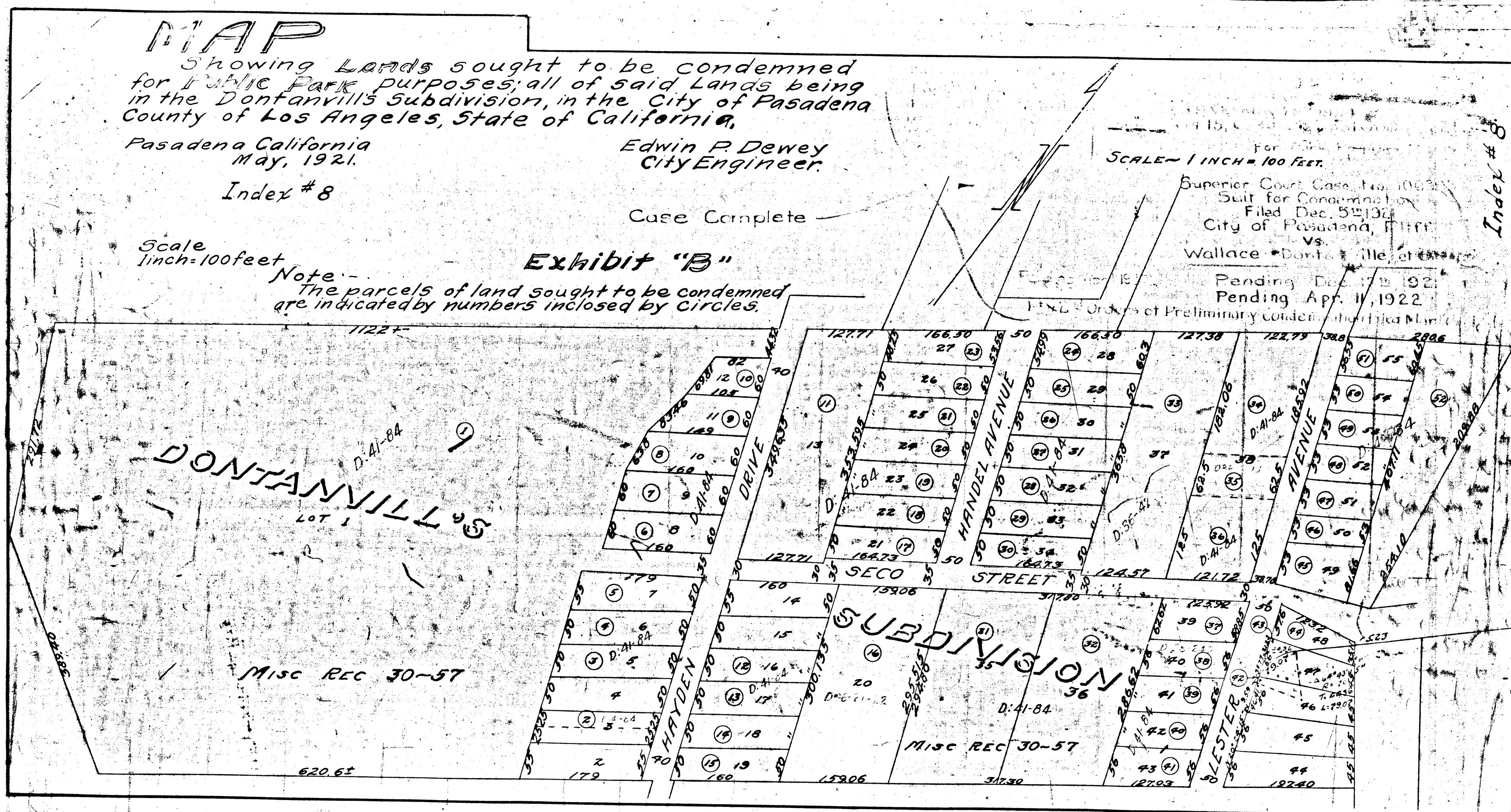
SCALE - 1 INCH = 100 FEET.

Superior Court Case No. 1002
Suit for Condemnation
Filed Dec. 5, 1921
City of Pasadena, Plaintiff
vs.
Wallace Dontanville, et al., Defendants

Pending Dec. 17, 1921
Pending Apr. 11, 1922

Scale
1 inch = 100 feet

Exhibit "B"
Note -
The parcels of land sought to be condemned are indicated by numbers inclosed by circles.



Index # 8