

Index #8

13.82
Acs.

PART

OF THE
RANCHO SAN PASCUAL
BEING THE UPPER PORTION OF THE LAND OF
LAKE VINEYARD

Richardson - 32.05 Acs.

C.F. 987 -

Lot 14

RE-PLAT OF LOTS 13, 14 and 15 of PAINTER'S RE-PLAT OF PORTIONS OF BLOCKS "A", "B", "C", "G" and "H" OF THE SUBDIVISION OF LANDS OWNED BY J. H. PAINTER

M.R. 54-69

Vol. D 56-211, P. 474-333

Dedicated for Arroyo Blvd. Ord. 1003

B.F. BALL

Dedicated for Arroyo Blvd. Ord. 1003

M.B. 148-4849
PAINTER'S RE-PLAT OF PORTIONS OF BLOCKS "A", "B", "C", "G" and "H" OF THE SUBDIVISION OF LANDS OWNED BY J.H. PAINTER

Dedicated for Arroyo Blvd. Ord. 1003

Found old 3" x 3" Stake N.W. Cor. Lot 23, San Pascual Tract

Formerly County Road

LAND AND WATER ASSOCIATION
M.R. 42-71 to 74 inc.

J. B. Wilson

45.75
Acres.

Line 10 feet eastwardly from the Cement Ditch of the Lake Vineyard Land and Water Association

AVE.

ST.

SUNSET

VIEW

ST.

DEL MONTE

ST.

TRACT

THE PALISADES

ST.

THE PALISADES

ST.

WASHINGTON

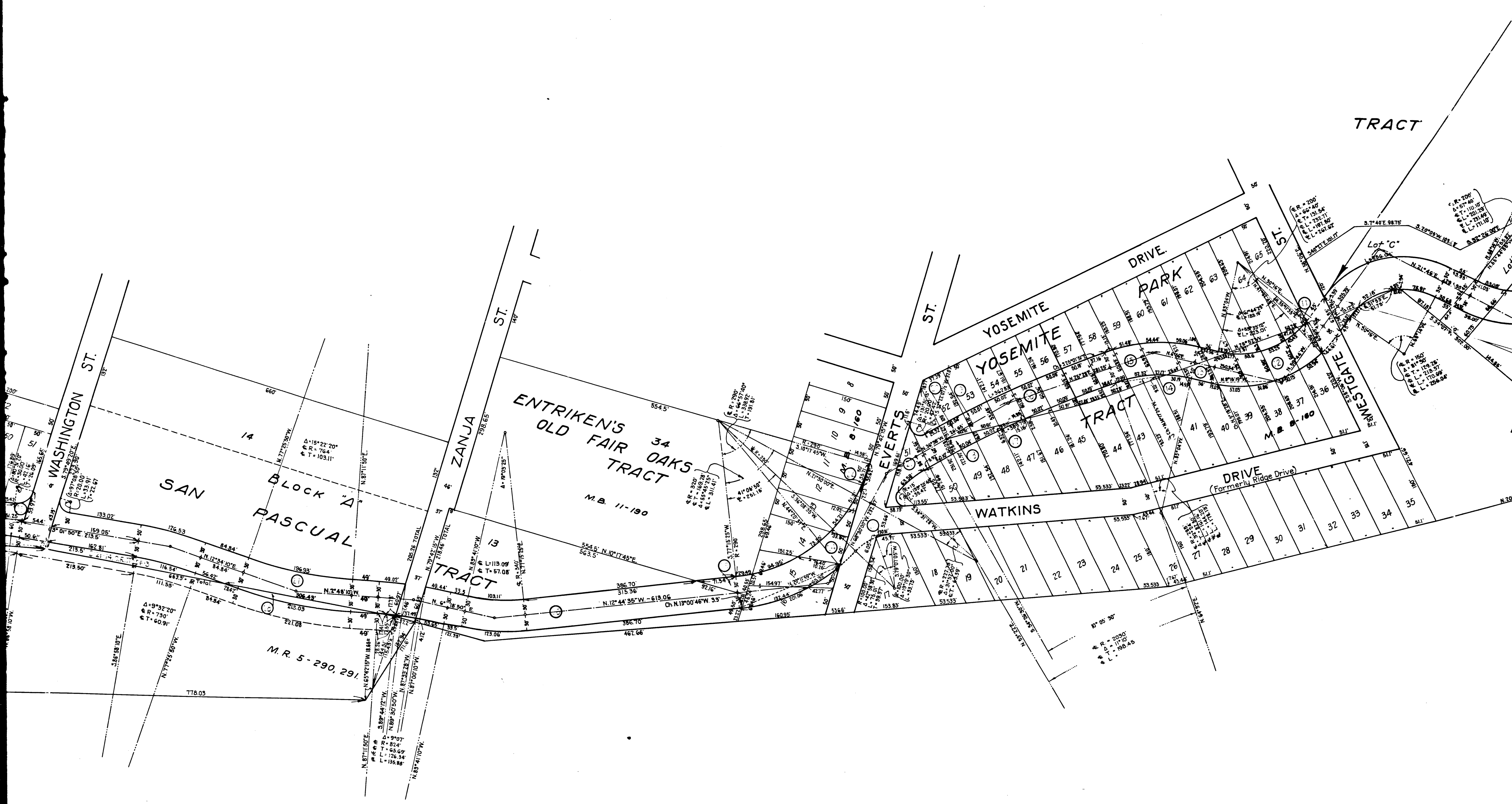
ST.

SHELDON AVENUE

28
Block "A"

2

C.F. 987 -



TRACT

ENTRIKEN'S
OLD FAIR TRACT
M.B. 11-190

SAN PASCUAL
BLOCK A
TRACT

YOSEMITE
TRACT

YOSEMITE
PARK

WESTGATE
TRACT

WATKINS
DRIVE
(Formerly Ridge Drive)

WASHINGTON ST.

ZANJA ST.

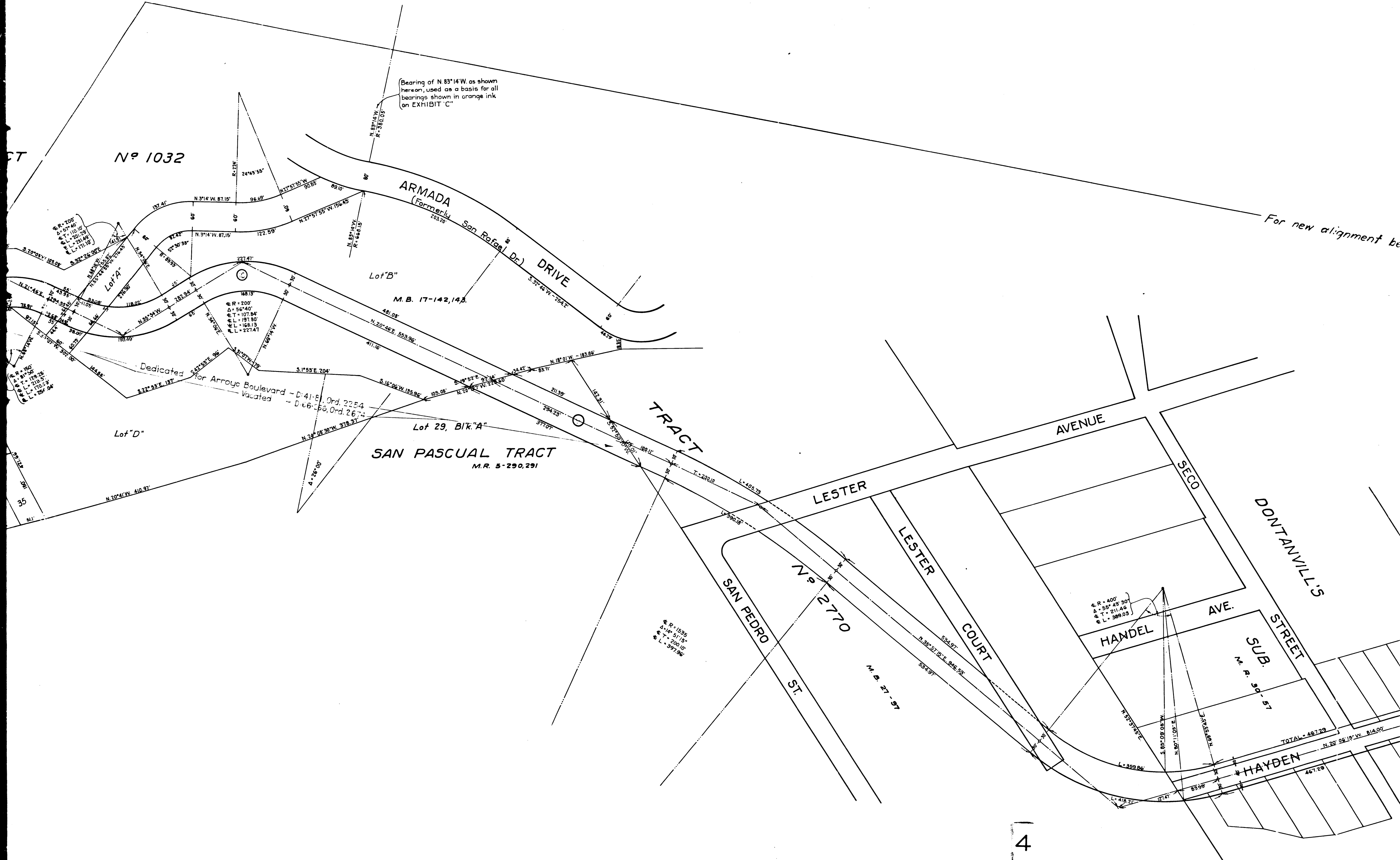
EVERTS ST.

YOSEMITE DRIVE

M.R. 5-290, 291

3

C.F. 987 -



Bearing of N 83°14'W. as shown hereon, used as a basis for all bearings shown in orange ink on EXHIBIT 'C'

For new alignment be...

CT

Nº 1032

ARMADA
(Formerly San Rafael Dr.)
DRIVE

Lot "B"
M.B. 17-142, 143

TRACT

SAN PASCUAL TRACT
M.R. 5-290, 291

AVENUE

LESTER

LESTER COURT

SAN PEDRO ST.

Nº 2770

M. B. 27-97

SECO

AVE.

SUB.

DONTANVILLE'S

STREET

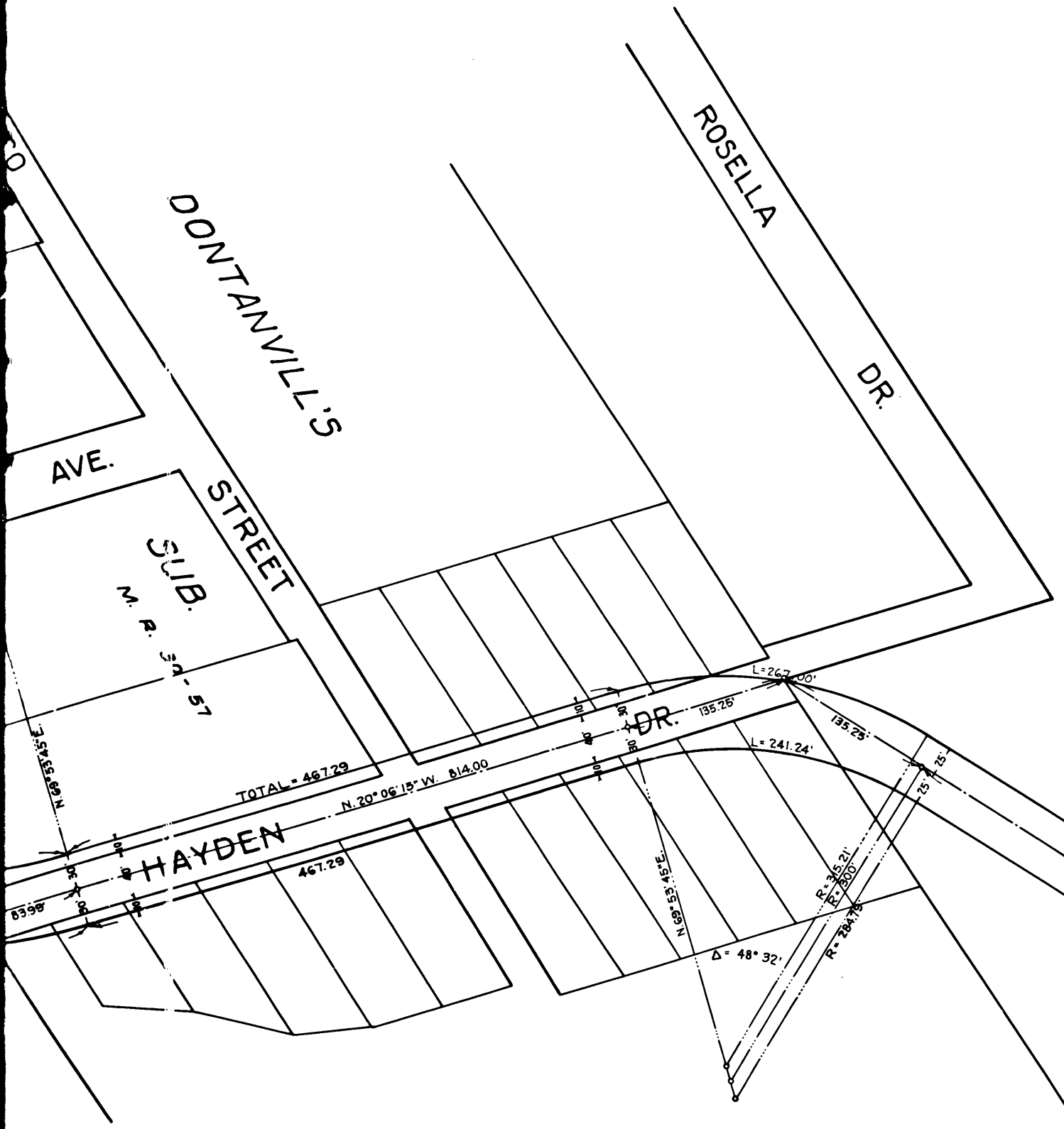
HANDEL

HAYDEN

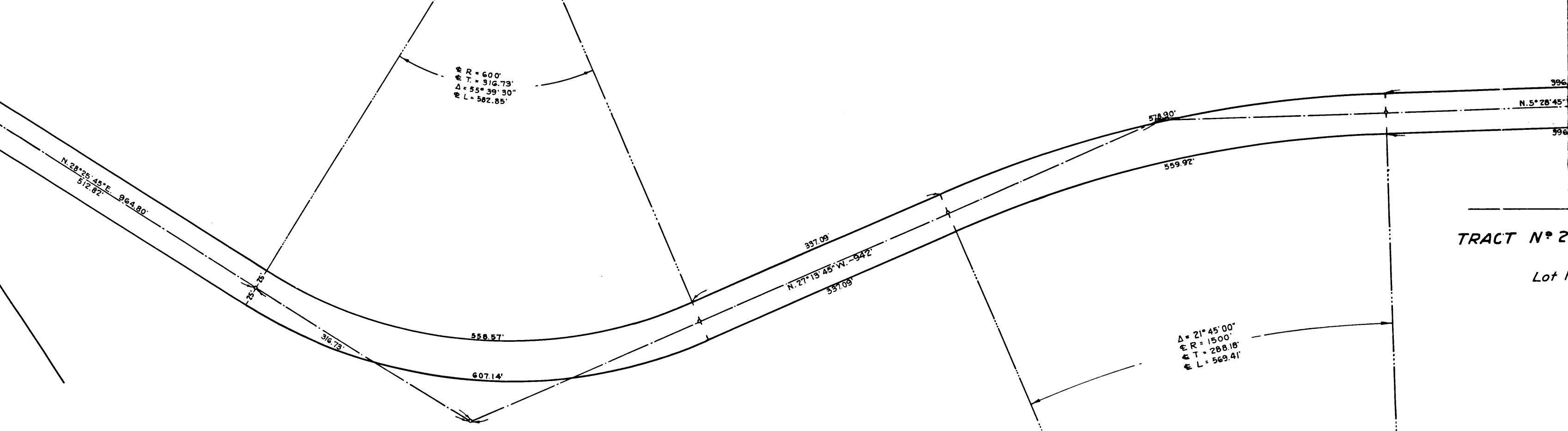
4

C.F. 987 -

For new alignment between these points see C.S. B-341



BROOKSIDE PARK



TRACT N° 2
Lot

5

C.F. 987 -

$\Delta = 21^\circ 45' 00''$
 $R = 1500'$
 $T = 288.18'$
 $L = 569.41'$

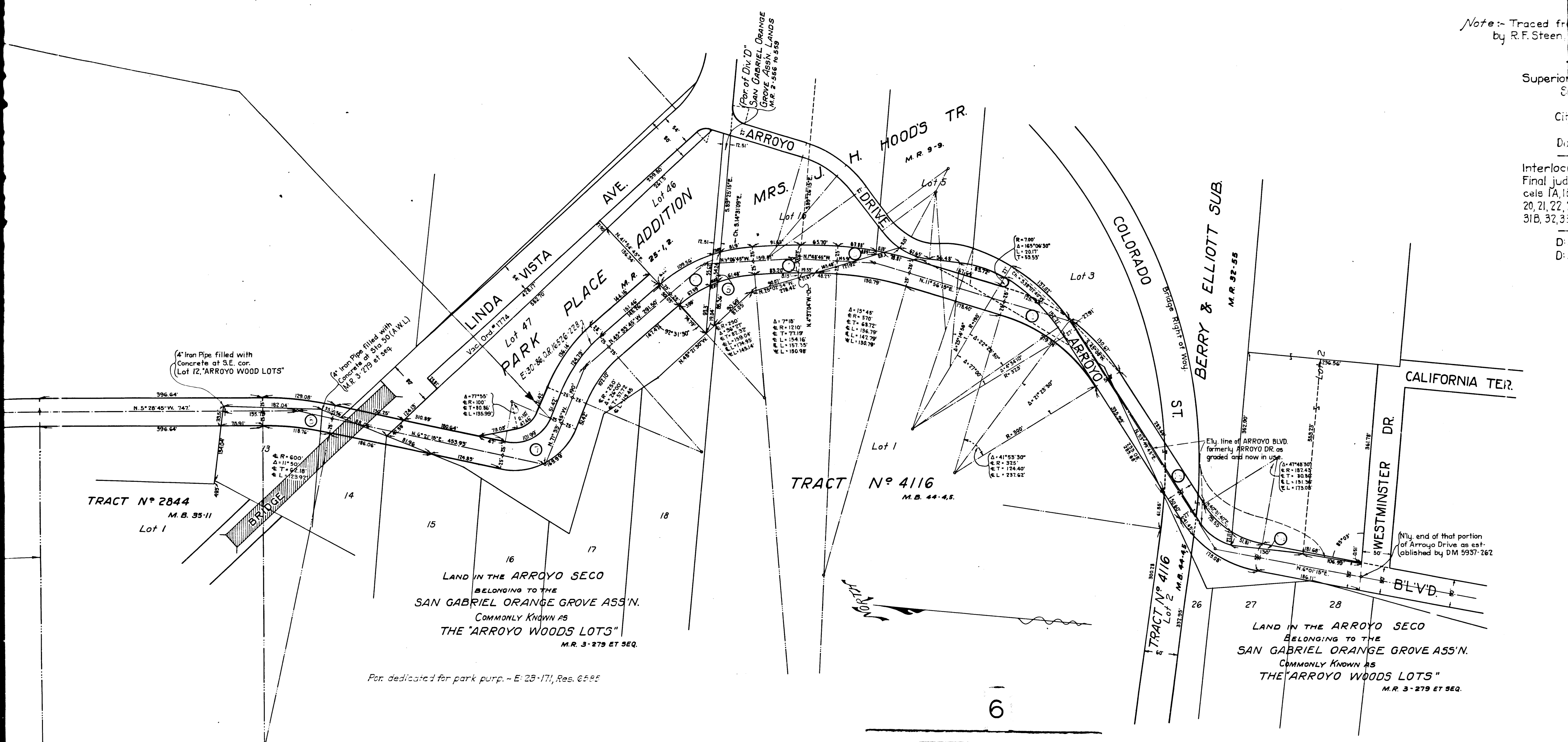
$R = 600'$
 $T = 516.73'$
 $\Delta = 55^\circ 39' 30''$
 $L = 582.85'$

Pasadena, Calif.
October - 1921.

Note: - The p
demned
ed in ci
Shad
condem
Δ = Cent
R = Radi
T = Tang

Note: - Traced fr
by R.F. Steen

Superior
S
Cit
Du
Interloc
Final jud
cals 1A, 1
20, 21, 22, 2
31B, 32, 33
D
D



Por. dedicated for park purp. - E: 23-171, Res. 6585

6
C.F. 987 -

MAP
SHOWING LAND TO BE CONDEMNED
FOR THE OPENING & WIDENING
OF
ARROYO BOULEVARD
IN THE CITY OF PASADENA, COUNTY OF LOS ANGELES,
STATE OF CALIFORNIA,
FROM THE NORTHERLY LINE OF WESTMINSTER DRIVE
TO THE NORTHERLY LINE OF MONTANA STREET

~ Scale ~
 1 inch = 100 feet.

Pasadena, Calif.,
 October ~1921.

Edwin P. Dewey,
 City Engineer.

EXHIBIT "C"

Notes: - The parcels of land sought to be condemned are indicated by numbers inclosed in circles.
 Shaded area shows land sought to be condemned.
 Δ = Central Angle. L = Total length of Arc.
 R = Radius. C = Center line.
 T = Tangent. E = East " "
 W = West " "

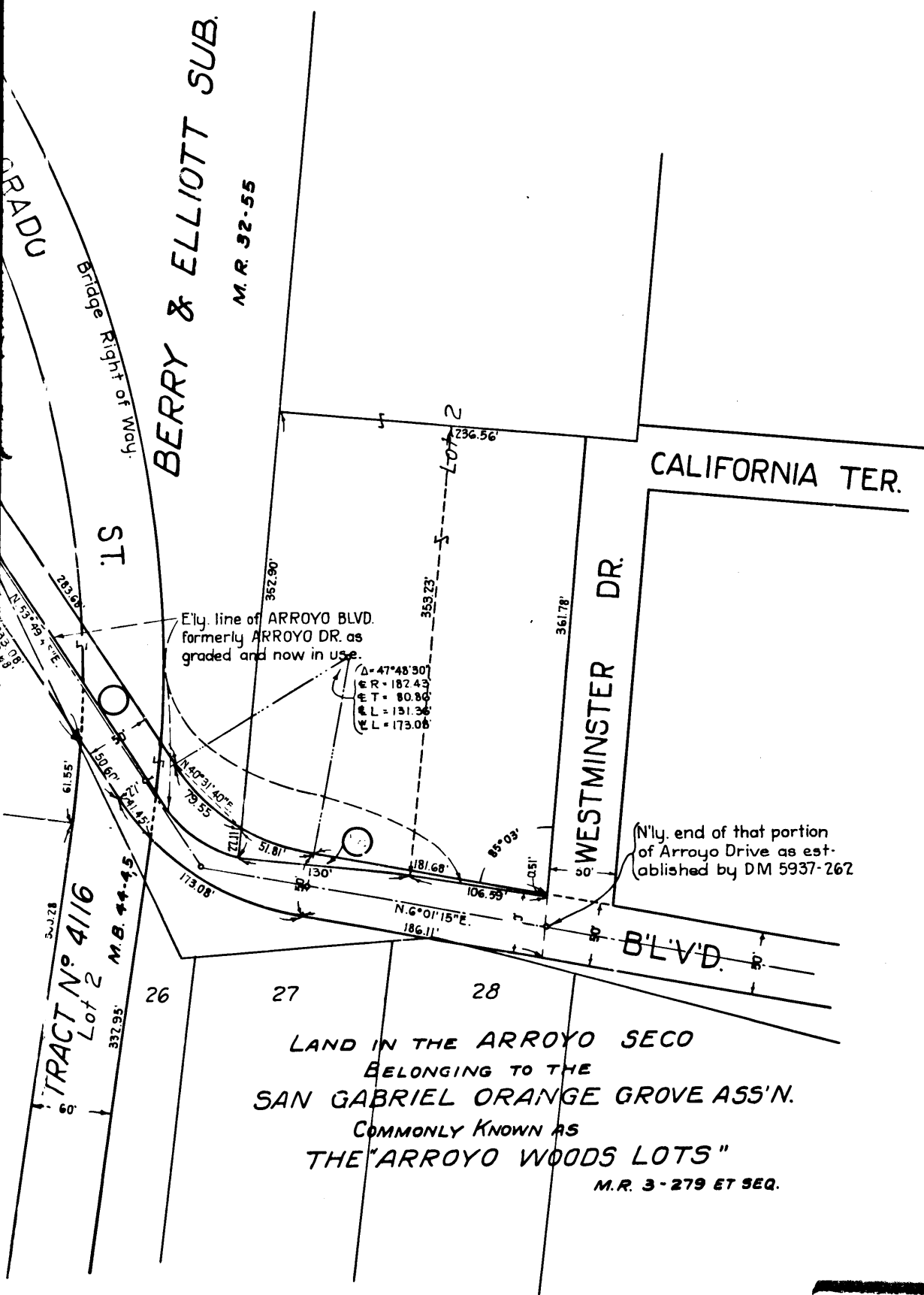
Note: - Traced from a Blue Print consisting of 5 sheets by R.F. Steen, Sept. 1933. Checked by H.D. Houston.

Index #8

Superior Court Case No. 100769
 Suit for Condemnation
 Filed Dec. 16th 1921
 City of Pasadena, Plff.
 Vs.
 David Brand et al., Def.

Interlocutory Judgment Aug. 14th 1924
 Final judgment in favor of Plff. as to Parcels 1A, 1B, 2, 3, 4, 5, 6, 7, 8, 11, 12, 13, 14, 15, 16, 17, 18, 19, 20, 21, 22, 23, 24, 25, 26, 27, 28, 29A, 29B, 30, 31A, 31B, 32, 33, 34, 35 and 36 rendered July 16, 1926

D: 53-259, O.R. 5684-335
 D: 53-286, Cert. DK-37656-7



7
 C.F. 987 -