

MAP NO. 396

SHOWING LAND TO BE CONDEMNED FOR THE OPENING AND WIDENING OF STANLEY AVENUE FROM THE WESTERLY LINE OF LOT 2 OF NATTS SUBDIVISION AS PER MAP RECORDED IN BOOK 5 PAGE 201, MISCELLANEOUS RECORDS OF LOS ANGELES COUNTY, CALIFORNIA TO THE WESTERLY LINE OF VERDUGO ROAD IN THE CITY OF GLENDALE, CALIFORNIA, AND THE ASSESSMENT DISTRICT TO PAY THE COSTS AND EXPENSES THEREOF. JAN. 3, 1921

SCALE 1" = 100'

CL. HILL - CITY ENGR.

Superior Court Case No. B95032  
 Suit for Condemnation  
 Filed June 30, 1921  
 City of Glendale, Pltff  
 Vs.

Frank Campbell, et al, Def.  
 Pending Feb. 11, 1922

Interlocutory Judgment rendered Dec. 22, 1922

Pending May 10, 1924

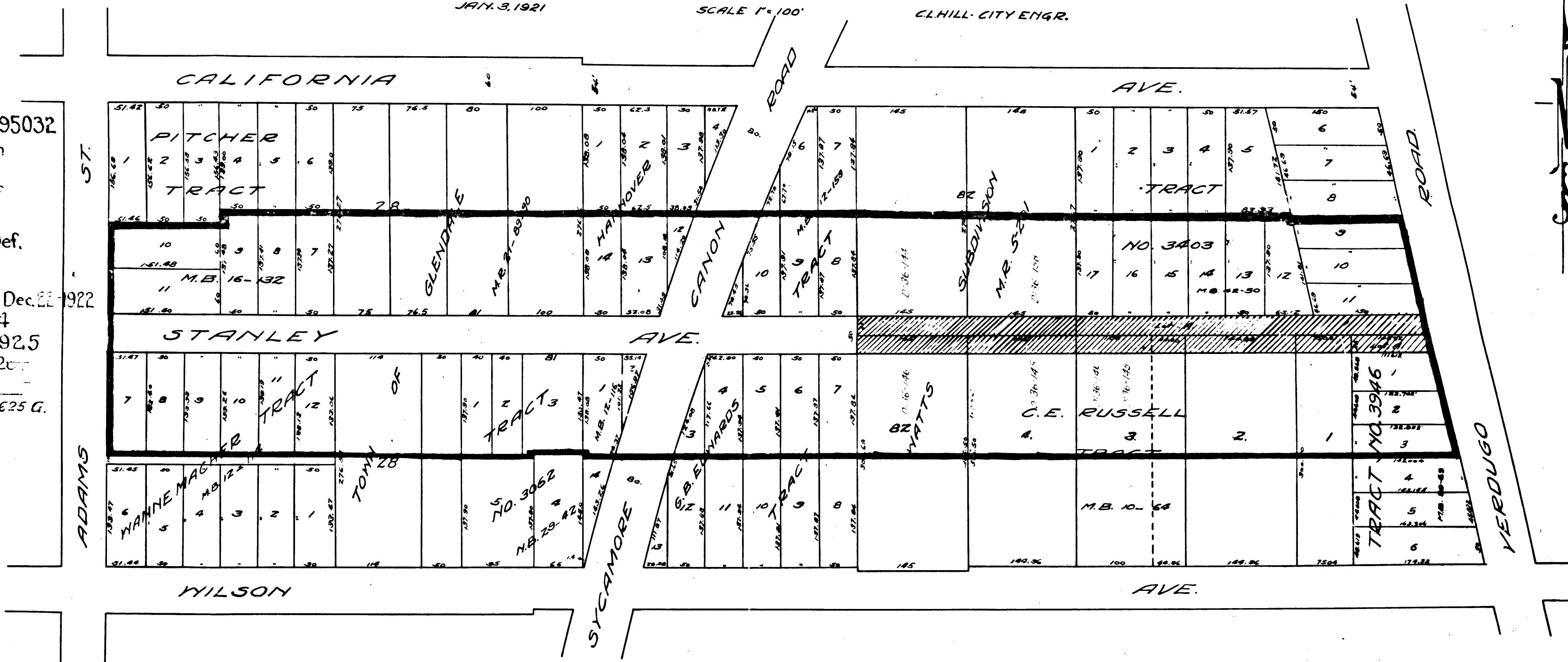
Pending Feb. 18, 1925

May 1, 1927

Apr. 1, 1927

Case dismissed Apr. 16, 1925 per Dec. 1625 G.

Sht. 41



LEGEND

YELLOW - LAND TO BE CONDEMNED  
 RED - BOUNDARIES OF ASSESSMENT DISTRICT

C. F. 991 -