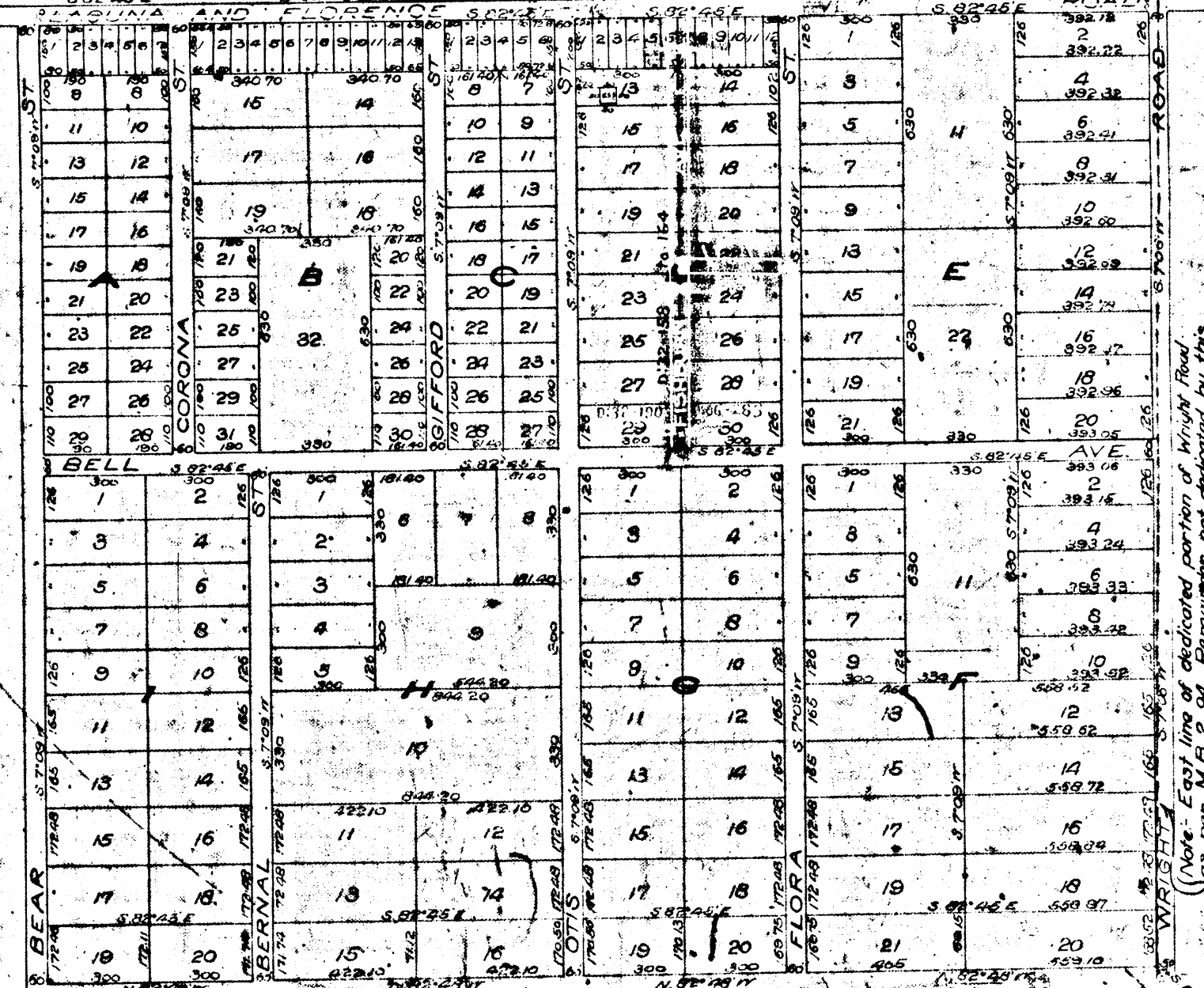


GRIDER AND HAMILTON'S
Subdivision of Easterly Portion
of Bell Tract
in Rancho San Antonio
Los Angeles Co. California
As surveyed in Jan. 1903 by
E. T. Wright
Scale 200 feet to 1 inch

Bernal St. changed to Corona St. D:13-91
Laguna and Florence Rd. changed to Baker Ave. D:13-93
Bear St. changed to Bear Ave. D:13-95
Corona St. - Corona
Flora - Flora
Gifford - Gifford
Otis - Otis



W. 60' Lot 29 Blk. A deeded to Bell School Dist. D. 30-71 D. 74-12-162

Superior Court Case No 10468
Suit for Condemnation
Filed April 6, 1922.
County of Los Angeles Pltff.
vs.
John R. Osborne et al Def.
Order authorizing Pltff to take immediate possession and use of Right of Way
Filed April 11, 1922.
Pending April 14, 1922

Proprietors
J. R. Bear
Maude S. Bear
Minerva Bell
A. S. Bell (their Attorney at Law)
A. S. Bell
Florence Ave D. 5699-149 D. 19-6-9
D. 5765-185 D. 19-81
Sht 7

Pending Feb 18 1925 (Scale reduced to 400' in.)
Final Judgment in favor of Pltff (Recorded Feb 4 1903)
Map bonded

12156