

EXHIBIT "B"

# MAP

SHOWING LAND TO BE CONDEMNED FOR  
PUBLIC STREET PURPOSES  
AT

## FUTURE STREET

BETWEEN  
KEMPER STREET AND ISABEL STREET  
IN THE  
CITY OF LOS ANGELES, CAL.

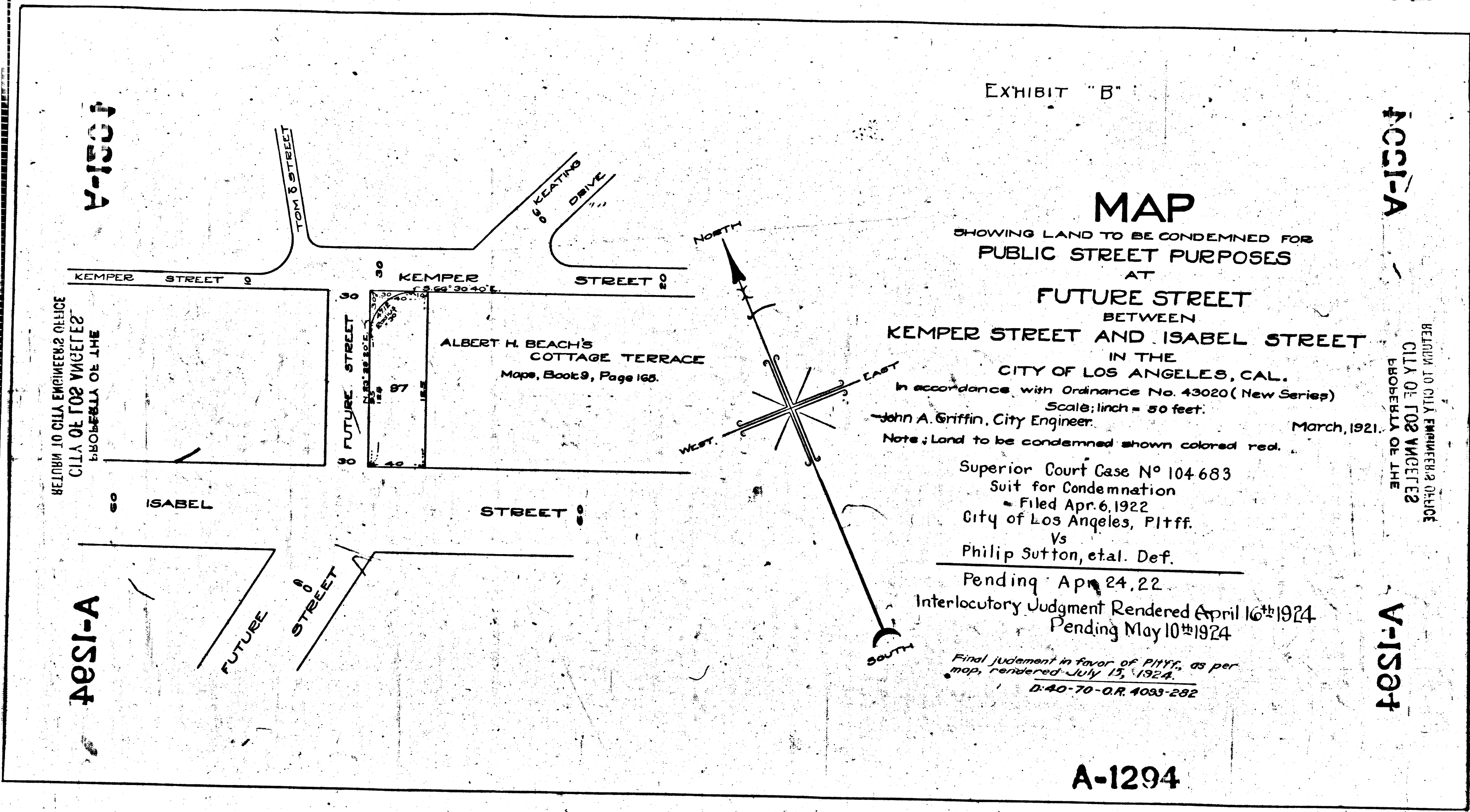
In accordance with Ordinance No. 43020 (New Series)  
Scale: 1 inch = 50 feet.  
John A. Griffin, City Engineer. March, 1921.

Note: Land to be condemned shown colored red.

Superior Court Case No 104-683  
Suit for Condemnation  
Filed Apr. 6, 1922  
City of Los Angeles, Pltff.  
Vs  
Philip Sutton, etal. Def.

Pending Apr. 24, 22  
Interlocutory Judgment Rendered April 16<sup>th</sup> 1924  
Pending May 10<sup>th</sup> 1924

Final Judgment in favor of Pltff., as per  
map, rendered July 15, 1924.  
D:40-70-O.R. 4033-282



A-1294

A-1294

RETURN TO CITY ENGINEER'S OFFICE  
CITY OF LOS ANGELES  
PROPERTY OF THE

RETURN TO CITY ENGINEER'S OFFICE  
CITY OF LOS ANGELES  
PROPERTY OF THE

A-1294

A-1294

A-1294