

SEC. 34

T. 1 N. R. 14 W.

Private Road - L.A. City to Ida B. Wilson  
E: 24-113, O.R. 15802-279 Parcel "E"

D: 35-179 O.R. 2150-241  
D: 35-12 O.R. 1412-276  
D: 31-225 O.R. 1095-37  
E: 6-210, O.R. 13993-78, Pipe Line Easement to City of

NW 1/4 of SE 1/4  
40 AC.  
E.S. Babcock  
Point "E"

NE 1/4 of SE 1/4  
40 AC.  
Alexander T. Sokolow

SW 1/4 of SE 1/4  
40 AC.  
E.S. Babcock  
Well Rig

D: 35-179 O.R. 2150-241  
D: 35-12 O.R. 1412-276  
D: 31-225 O.R. 1095-37

SE 1/4 of SE 1/4  
40 AC.  
E.S. Babcock

D: 35-179 O.R. 2150-241  
D: 35-12 O.R. 1412-276  
D: 31-225 O.R. 1095-37

D: 35-275, O.R. 3136-3  
Q.C. to Ida B. Wilson.

Par. A - E: 24-113, O.R. 15802-279 - Par. B  
(G.D. to Ida B. Wilson)

Par. 2 - E: 24-113, O.R. 15779-346 - Par. 1  
D: 35-274 O.R. 3023-221

D: 35-275, O.R. 3136-3  
Q.C. to Ida B. Wilson.

Par. D - E: 24-113, O.R. 15802-279 (G.D. to Ida B. Wilson)

C.F. 997

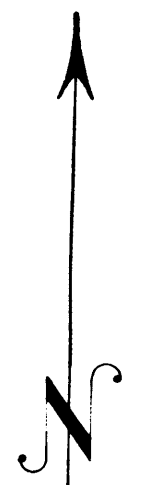
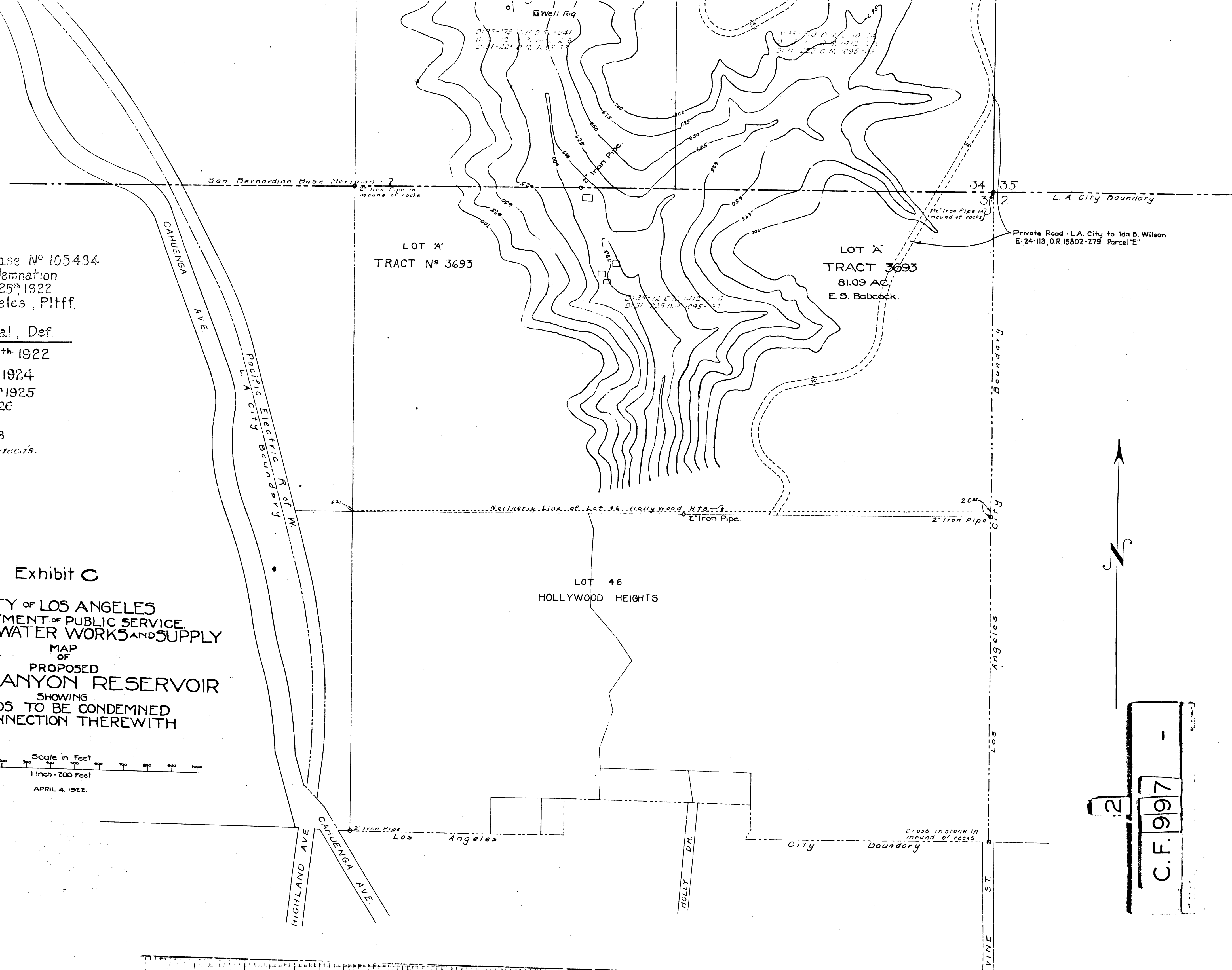
Superior Court Case No 105434  
 Suit for Condemnation  
 Filed Apr. 25<sup>th</sup> 1922  
 City of Los Angeles, Pltff.  
 Vs  
 E S Babcock et al, Def

Pending May 8<sup>th</sup> 1922  
 Pending May 10<sup>th</sup> 1924  
 Pending Feb. 18<sup>th</sup> 1925  
 " May 1, 1926  
 " Apr 1, 1927  
 " Feb. 29, 1928

Note: Covered by deeds.

Exhibit C  
 CITY OF LOS ANGELES  
 DEPARTMENT OF PUBLIC SERVICE  
 BUREAU OF WATER WORKS AND SUPPLY  
 MAP  
 OF  
 PROPOSED  
 WIED CANYON RESERVOIR  
 SHOWING  
 LANDS TO BE CONDEMNED  
 IN CONNECTION THEREWITH

Scale in Feet.  
 100 50 0 50 100 150 200 250 300 350 400 450 500 550 600 650 700 750 800 850 900 950 1000  
 1 Inch = 200 Feet  
 APRIL 4, 1922.



2  
 C.F. 997 -