

SHOWING  
FOR THE  
SERPANO  
In accordance with  
JOHN A. C.  
NOTE: Land

C.F. 998

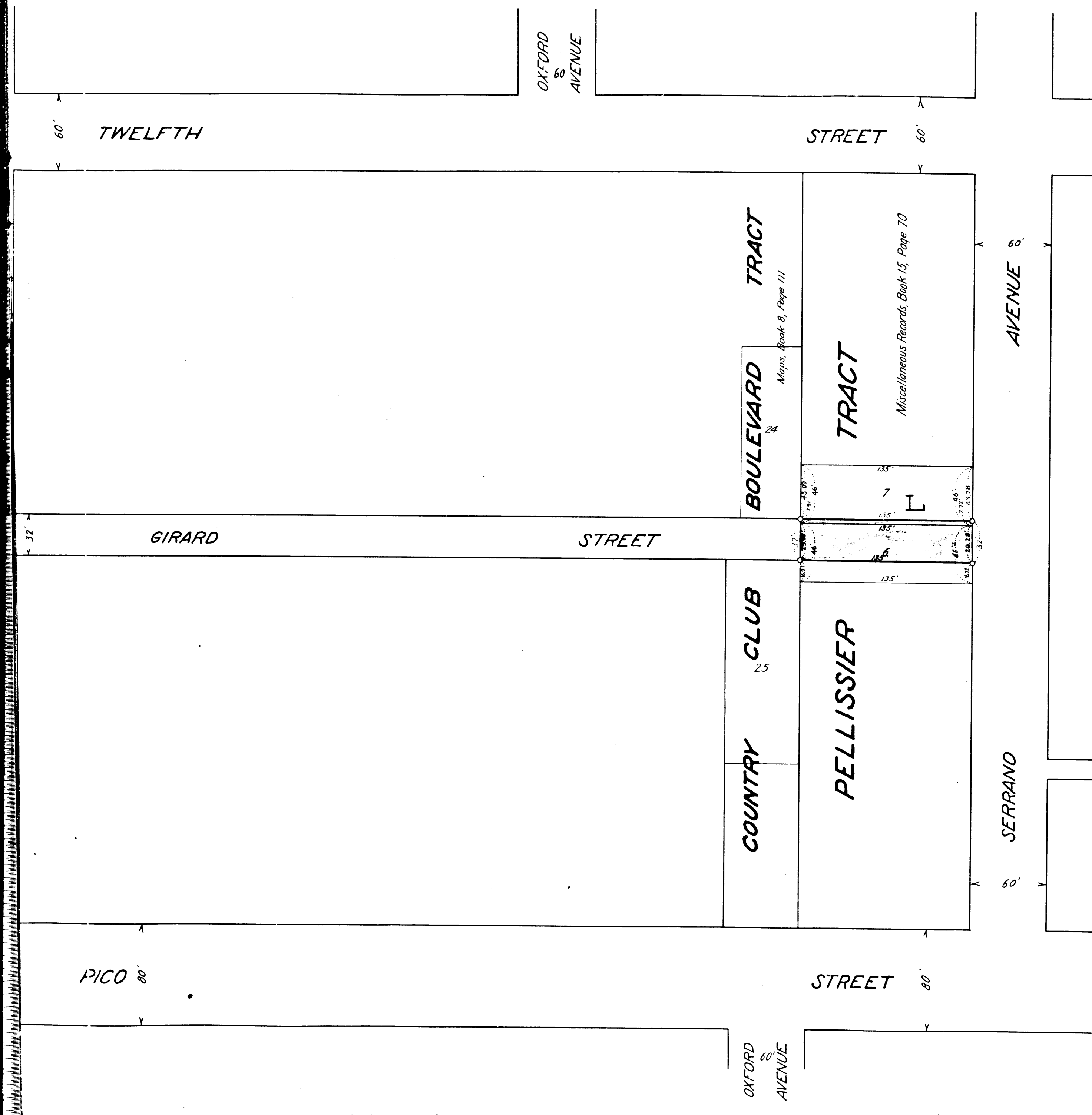


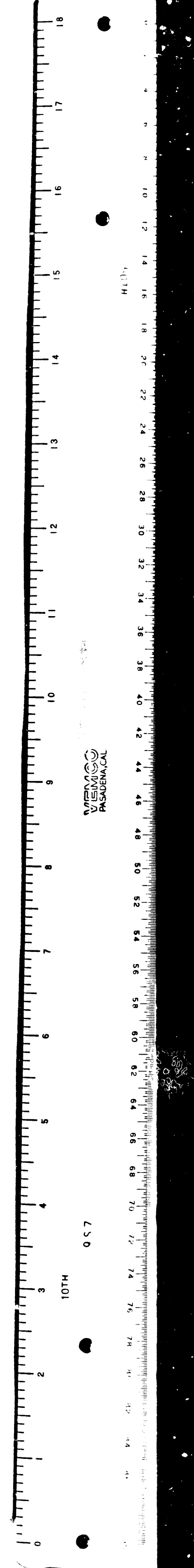
EXHIBIT "C"

MAP  
 SHOWING THE LAND TO BE CONDEMNED  
 FOR THE OPENING AND EXTENDING OF  
**GIRARD STREET**  
 BETWEEN  
 SERRANO AVENUE AND WESTERNAVENUE  
 IN THE  
 CITY OF LOS ANGELES, CAL.

In accordance with Ordinances Nos. 42710 and 43141 (New Series)  
 JOHN A. GRIFFIN CITY ENGINEER, February 1922  
 Scale 1 Inch = 50 Feet  
 NOTE - Land to be condemned shown colored red.

Superior Court Case No. 104737  
 Suit for Condemnation.  
 Filed April 7, 1922  
 City of Los Angeles, Pltff.  
 Vs  
 John S. Palmer, et. al. Def.  
 Pending May 10, 1922.  
 Pending May 10<sup>th</sup> 1924

Final judgement in favor of Pltff. as per  
 map. rendered October 2<sup>nd</sup> 1923.  
 D:40-35 O.R.277A-382  
 Girard St. chg. to Twelfth Pl. - Ord. 64536.



2  
 C.F. 998 -