

C.F. 1003 -

TRACT

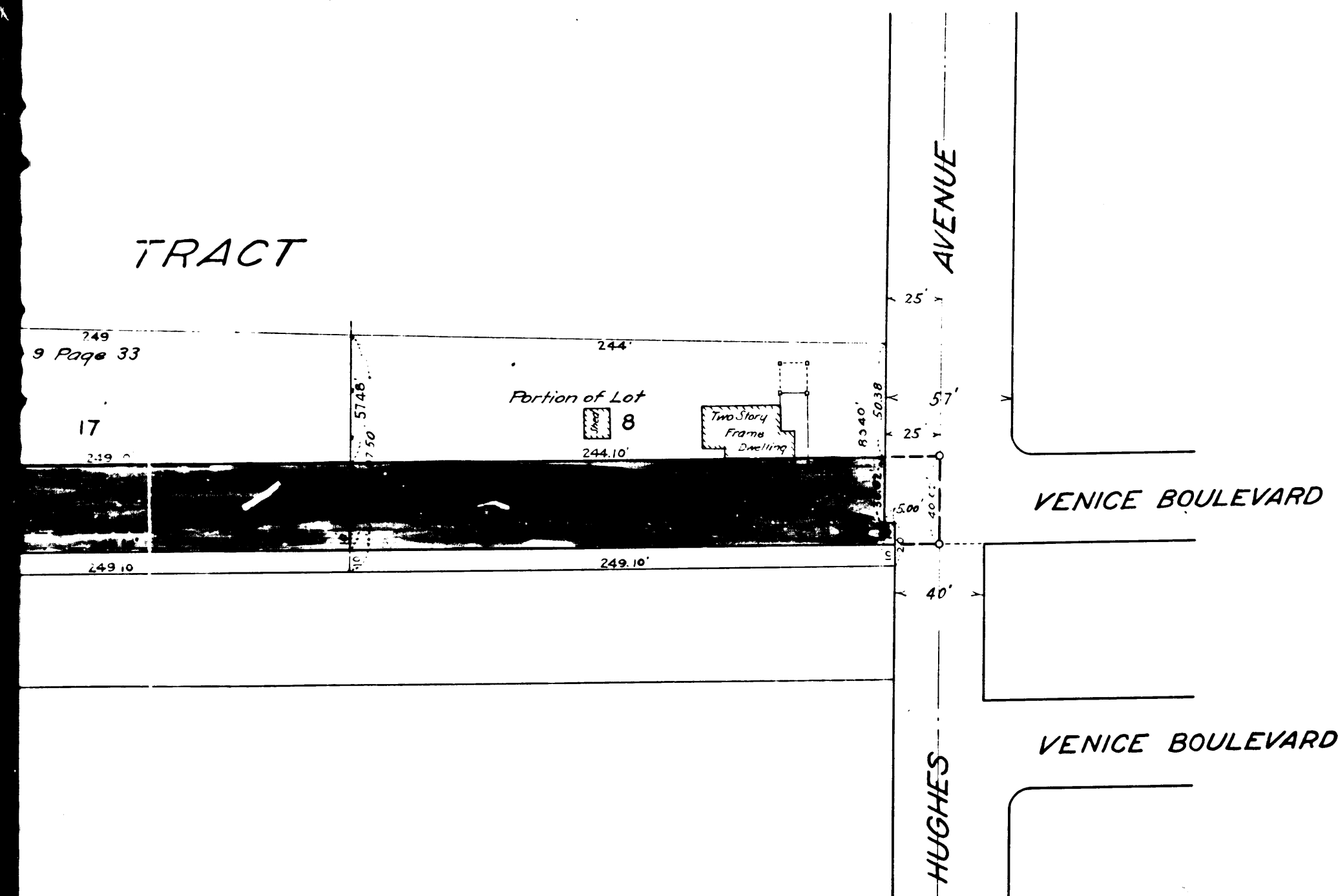


EXHIBIT "D"

MAP
 SHOWING THE LAND TO BE CONDEMNED
 FOR THE OPENING AND EXTENDING OF
VENICE BOULEVARD
 BETWEEN
HUGHES AVENUE AND JASMINE AVENUE
 IN THE
 CITY OF LOS ANGELES, CAL.

In accordance with Ordinances Nos. 43178 and 43641 (New Series)

JOHN A. GRIFFIN, CITY ENGINEER. June, 1922.
Scale, 1 Inch = 50 Feet

NOTE - Land to be condemned shown colored red.
Broken lines and figures show where the holdings
differ from the recorded subdivisions.

Superior Court Case No. 109521
Suit for Condemnation
Filed Aug. 4th 1922
City of Los Angeles, Plff.
Vs.

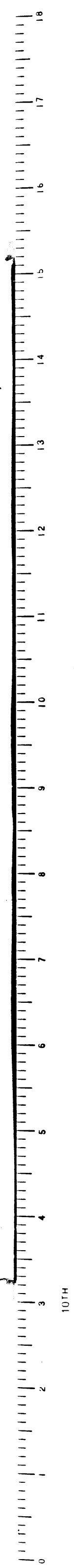
AH Fixen, et al. Def's.
Pending August 14th 1922.
Interlocutory Judgment Rendered Aug. 17th 1923
Pending May 10th 1924

Final judgment in favor of Plff., as per
map, rendered July 10th 1924.
D. 40-65-C.R. 3416-275

11/22

2

C.F. 1003 -



MEMCO
PASADENA, CAL.

957