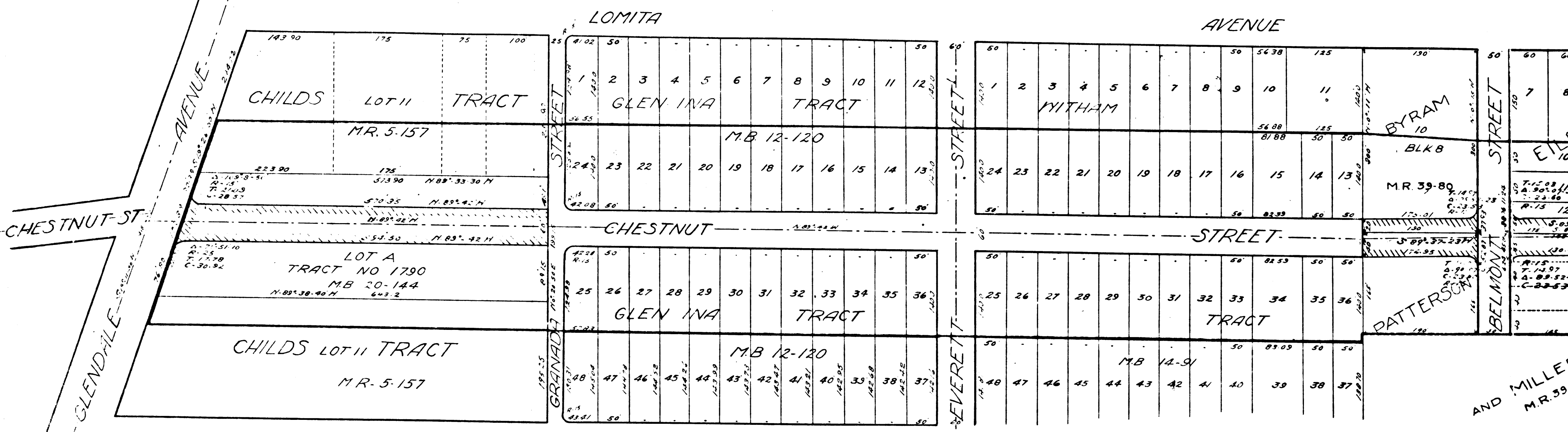


10TH 957
MEMPHIS
50TH



Dismissed Dec. 2nd 1924

Superior Court Case No. 110695
 City of Glendale Pl vs C. Lillian Hour sell
 & UV Hounsell et al, Left
 Interlocutory Judgment rendered Jan. 30th 1924
 Pending May 10th 1924
 MAP NO 48924

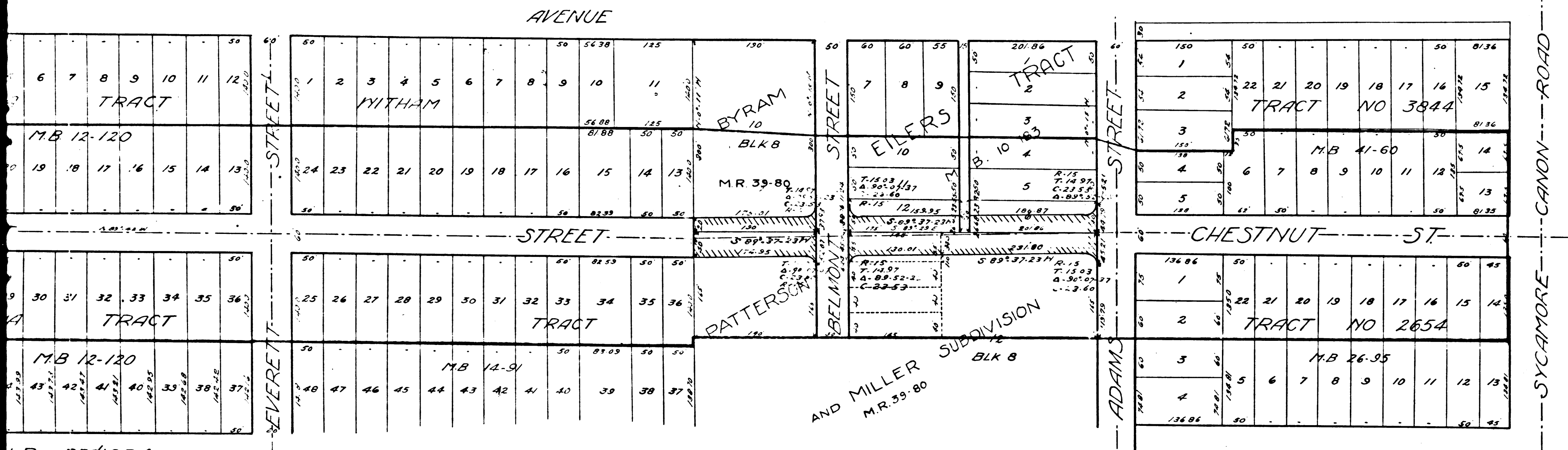
SHOWING LAND TO BE CONDEMNED
 FOR THE
 LAYING OUT AND OPENING OF
 CHESTNUT STREET
 FROM THE EASTERLY LINE OF GLENDALE AVENUE TO
 THE WESTERLY LINE OF GRANADA STREET ALL WITHIN THE
 CITY OF GLENDALE

AND SHOWING THE DISTRICT TO BE ASSESSED TO PAY
 THE COSTS AND EXPENSES THEREOF

SCALE 1 INCH = 100 FEET
 J. L. HILL CITY ENGINEER
 MARCH 1924

LEGEND
 — YELLOW TINTING SHOWS LAND TO BE CONDEMNED
 — RED — SHOWS ASSESSMENT DISTRICT BOUNDARY

C.F. 1004 -



Dec. 2nd 1924

LEGEND
 DOTTED LINE SHOWS LAND TO BE CONDEMNED
 DASHED LINE SHOWS ASSESSMENT DISTRICT BOUNDARY

37 April 1924

2

C.F. 1004 -

