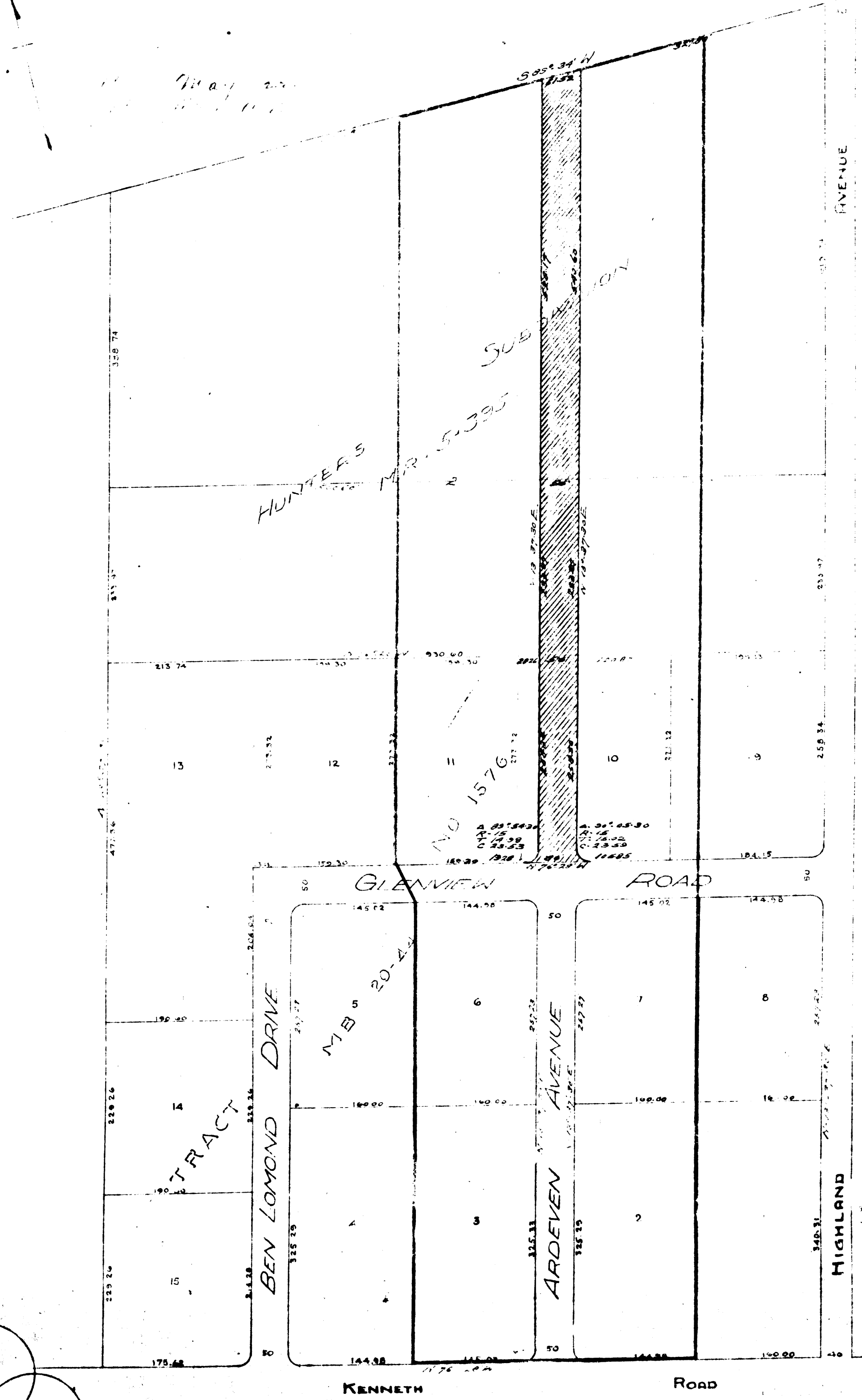


Map No 521
 SHOWING LAND TO BE CONDEMNED
 FOR THE
 LAYING OUT AND OPENING OF
 ARDEVEN AVENUE
 FROM THE NORTHERLY LINE OF GLENVIEW ROAD TO THE
 NORTHERLY LINE OF HUNTERS SUBDIVISION AND SHALL INCLUDE THE
 CITY OF GLENDALE
 AND SHOWING THE LAND TO BE
 ASSESSED TO PAY THE COSTS AND EXPENSES THEREOF
 Scale - 1/4" = 100' City Engineer
 May 1922

LEGEND
 ———— Shaded Strip shows Land to be Condemned
 ———— Area shows Assessment District



Superior Court Case No 110696
 City of Glendale, Plffs vs Alexander Mitchell
 and Joseph Mitchell et al, Dftt
 Case Dismissed by attorney for City of Glendale Jan. 25th 1924

C.F. 11005

