

MAP NO 527
 SHOWING LAND TO BE CONDEMNED
 FOR THE
 LAYING OUT AND OPENING OF
 ADAMS STREET
 FROM THE SOUTHERLY LINE OF TRACT NO 1374 M.B. 18-100 TO THE
 NORTHERLY LINE OF TRACT NO 1374 M.B. 18-100 AND ITS PROLONGATION EASTWARDLY
 CITY OF GLENDALE
 AND SHOWING THE LAND TO BE
 ASSESSED TO PAY THE COSTS AND EXPENSES THEREOF
 Scale - 1 in = 100 ft C.L. Hill City Engineers
 MAY - 1922

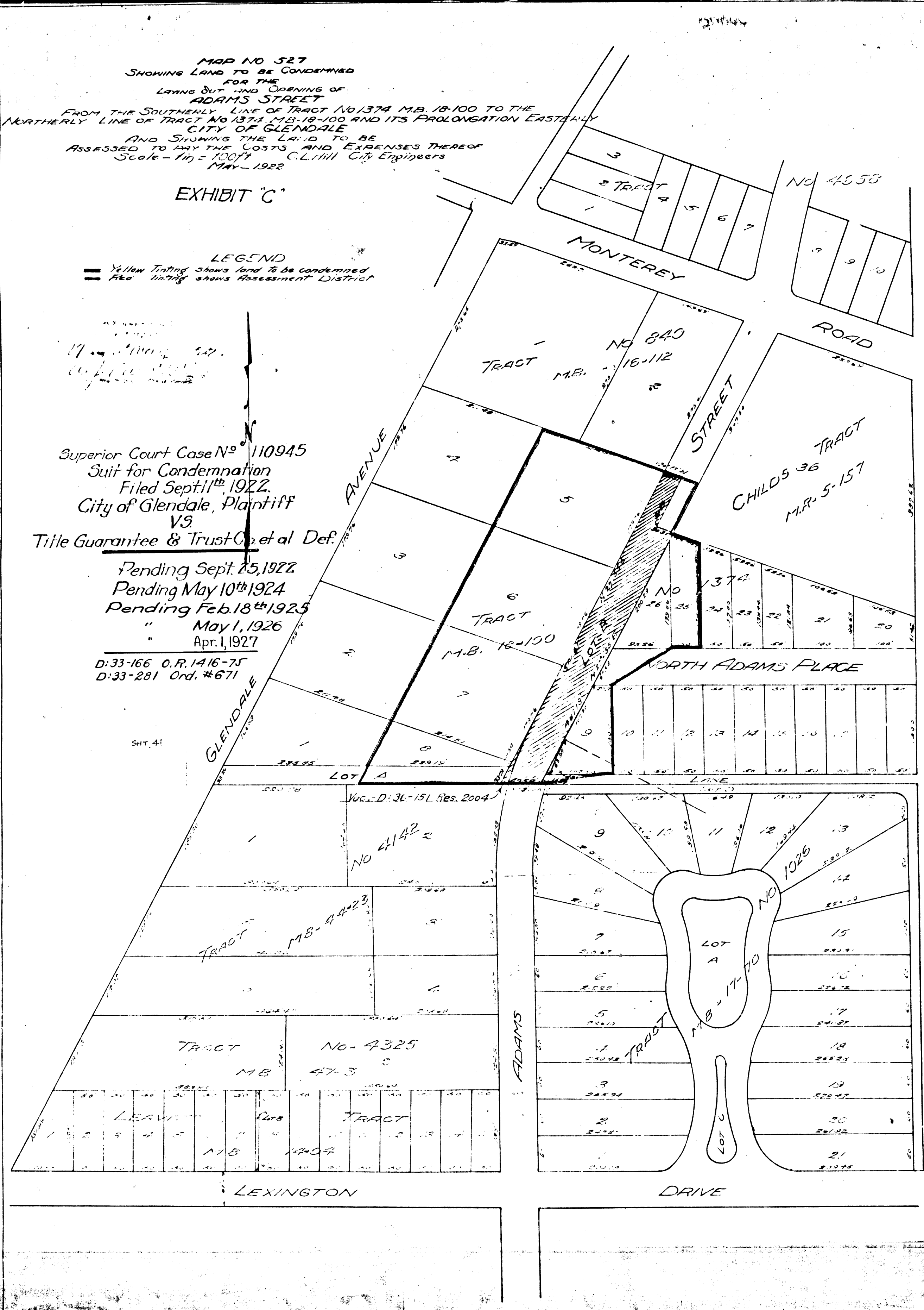
EXHIBIT "C"

LEGEND
 Yellow Tinting Shows Land to be Condemned
 Red Tinting Shows Assessment District

Superior Court Case No 110945
 Suit for Condemnation
 Filed Sept 11th 1922.
 City of Glendale, Plaintiff
 VS
 Title Guarantee & Trust Co et al Def.

Pending Sept 25, 1922
 Pending May 10th 1924
 Pending Feb 18th 1925
 " May 1, 1926
 " Apr. 1, 1927

D:33-166 O.P. 1416-75
 D:33-281 Ord. #671



C.F. 1007 -

