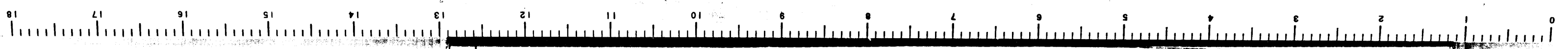




VEMCO PASADENA, CAL.

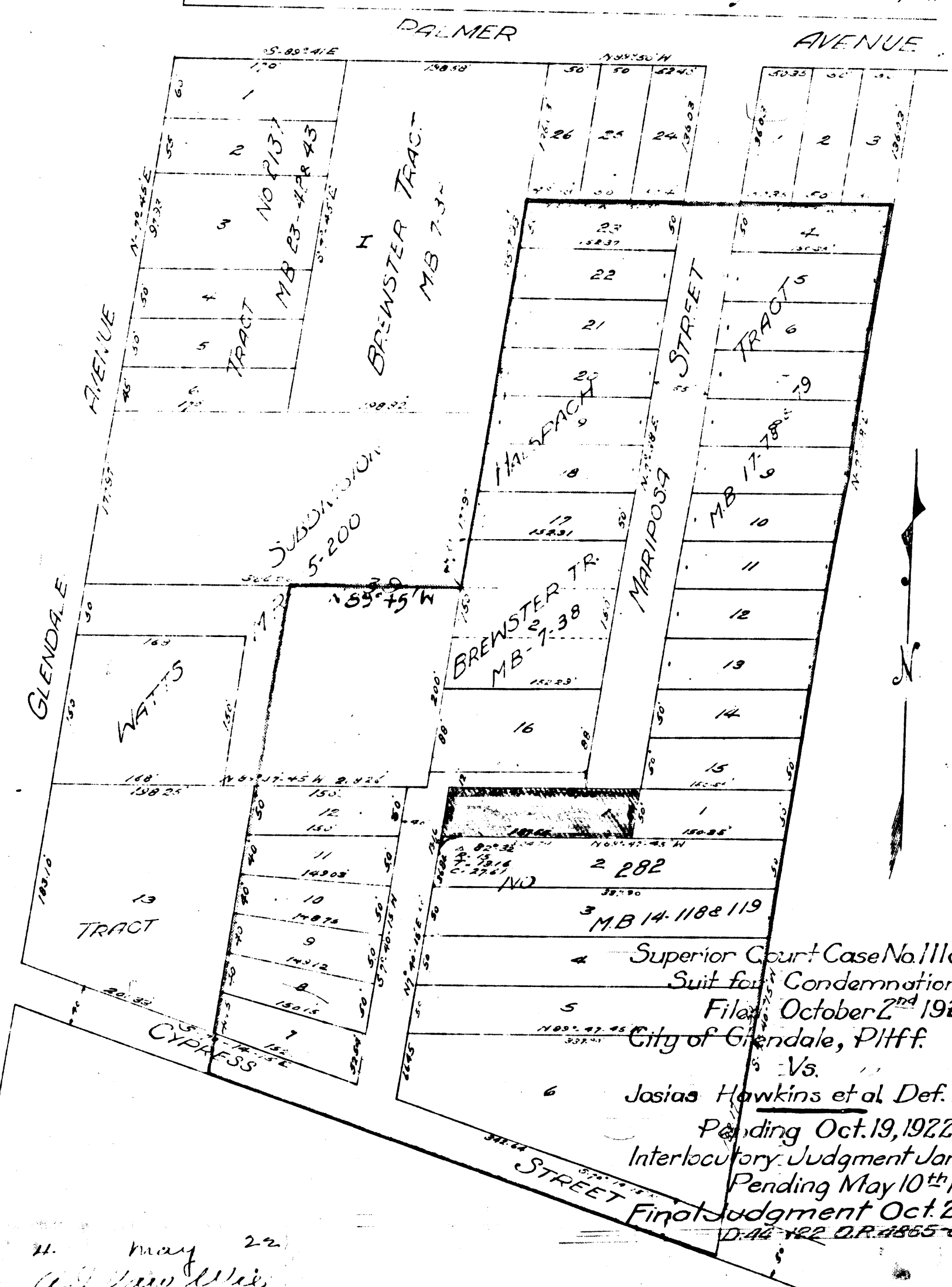
LS 7

10TH



MAP No 517
 SHOWING LAND TO BE CONDEMNATED
 FOR THE
 LAYING OUT AND WIDENING OF
 MARIPOSA STREET
 THE NORTHERLY LINE OF CYPRESS STREET TO THE
 NORTHERLY LINE OF TRACT NO 282, MB 14-118 & 119
 CITY OF GLENDALE
 AND SHOWING THE LAND TO BE
 ASSESSED TO PAY THE COSTS AND EXPENSES THEREOF
 Scale 1 in 100 ft. CITY ENGINEER
 APRIL 1922

LEGEND
 Yellow Tinting shows land to be condemned
 Red Tinting shows boundary of the Assessment District

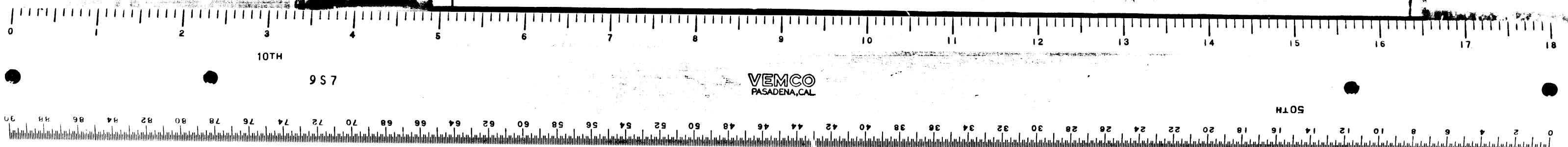


C.F. 11009

Superior Court Case No. 111888
 Suit for Condemnation
 Filed October 2nd 1922
 City of Glendale, Plff.
 Vs.
 Josias Hawkins et al. Def.
 Pending Oct. 19, 1922
 Interlocutory Judgment Jan. 30th 1924
 Pending May 10th 1924
 Final Judgment Oct. 23, 1924
 D:46-122 O.R. 4855-56

May 22
 City Engineer

Sh. 41



9 S 7

VEMCO PASADENA, CAL.

10 S

