

Superior Court Case No. 112240  
Suit for Condemnation  
Filed Oct. 10<sup>th</sup>, 1922  
City of Los Angeles, Plff.  
Vs.  
James J. Warwick, et al. Def.

Pending Oct. 24<sup>th</sup> 1922  
Pending May 10<sup>th</sup> 1927  
Dismissed Oct. 30<sup>th</sup> 1922

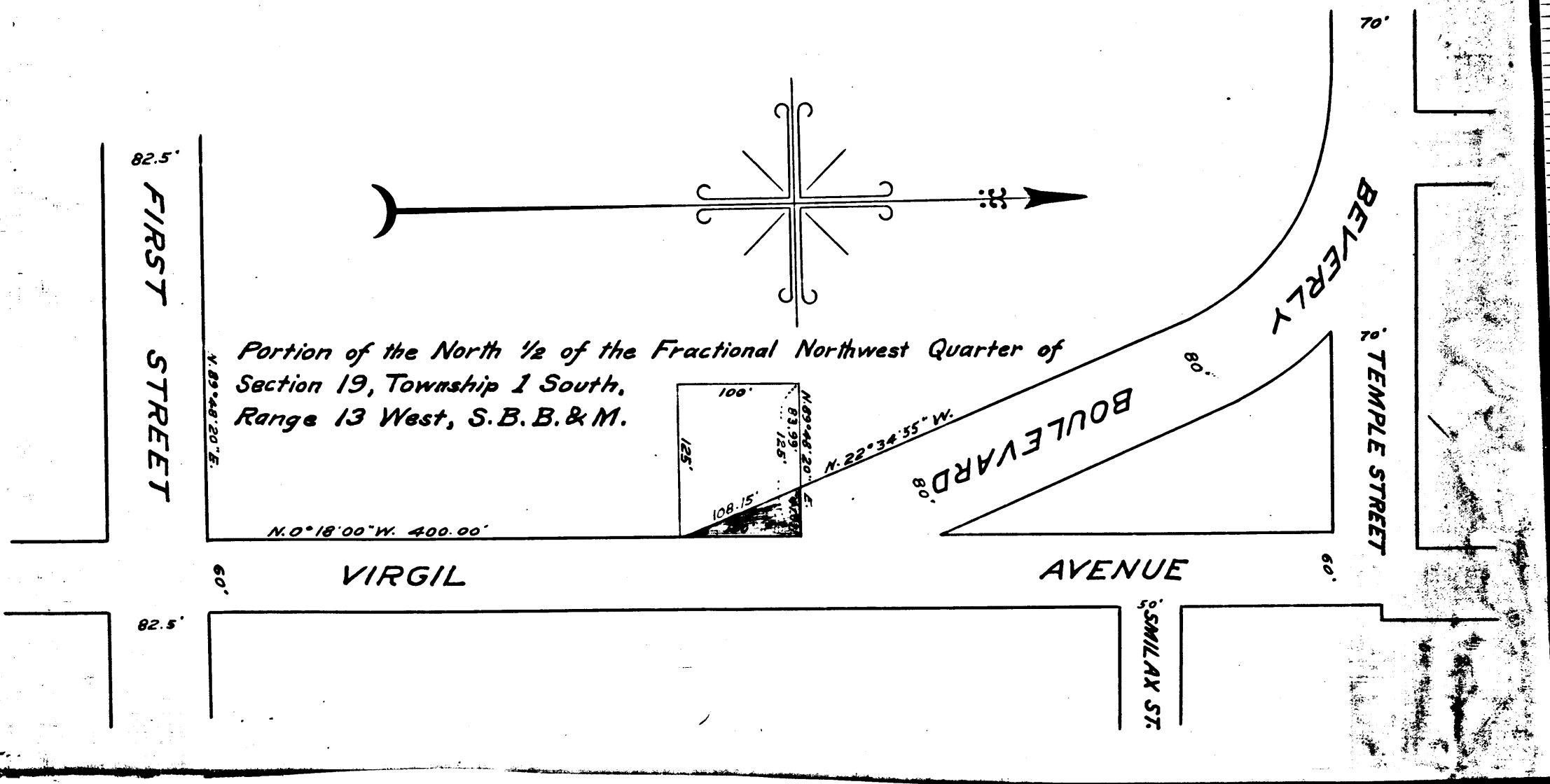
**MAP**  
SHOWING LAND TO BE CONDEMNED  
FOR THE  
OPENING AND WIDENING

OF  
**BEVERLY BOULEVARD**  
NORTHWESTERLY FROM VIRGIL AVENUE

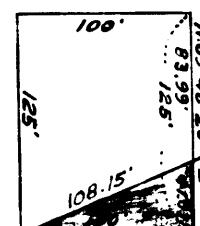
IN THE  
**CITY OF LOS ANGELES, CALIFORNIA.**  
In accordance with Ordinance No. 44245 (New Series)  
John A. Griffin, City Engineer. August, 1922.

Scale 1 inch = 100 feet.

Note:- Land to be condemned shown colored Red.



Portion of the North 1/2 of the Fractional Northwest Quarter of  
Section 19, Township 1 South,  
Range 13 West, S.B.B. & M.



N. 0° 18' 00" W. 400.00'

C.F. 1013 -