

MAP and DIAGRAM

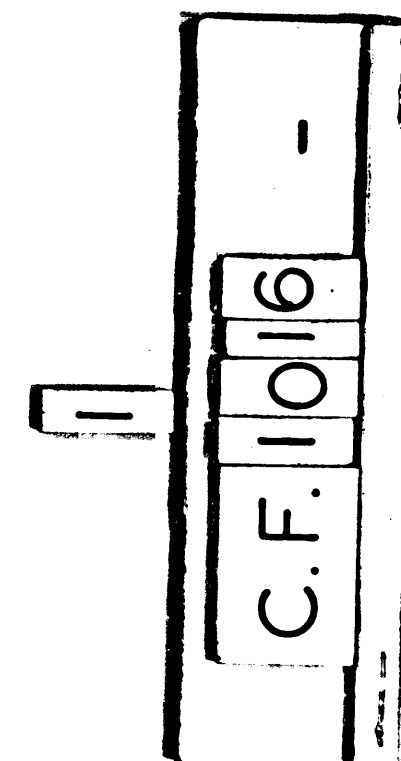
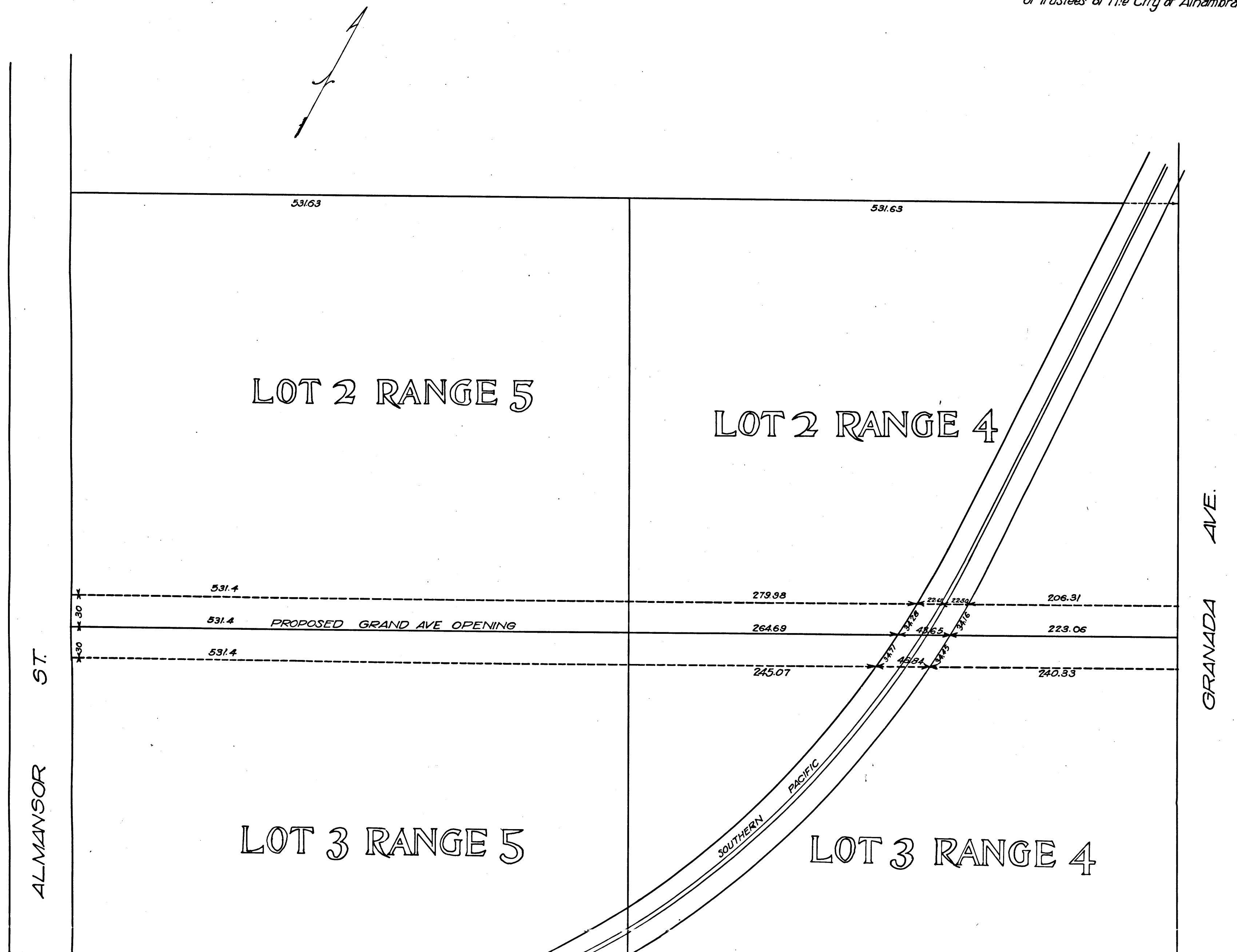
Showing the land to be taken and condemned for the opening of Grand Avenue in the City of Alhambra California from the Easterly line of Almansor Street to the Westerly line of Granada Street.
Under Ordinance No. 533.

Hereon figures in black ink next to property lines show each the length of said lines. other figures in black show the numbers of the lots. Solid black lines show original lot lines. Dotted lines show land to be taken for the opening of said Street.

The diagram is drawn to a scale of feet to one inch.

I hereby certify that this Map was confirmed and adopted by the Board of Trustees of the City of Alhambra on the 6th day of Jan. 1922

O. M. Caulk
City Clerk
of the City of Alhambra.



ALMANSOR ST.

GRANADA AVE.

LOT 2 RANGE 5

LOT 2 RANGE 4

LOT 3 RANGE 5

LOT 3 RANGE 4

531.63

531.63

531.4

279.98

206.31

531.4 PROPOSED GRAND AVE OPENING

264.69

223.06

531.4

245.07

240.33

SOUTHERN PACIFIC

Superior Court Case No. 88803
Suit for Condemnation
Filed Jan. 31, 1913
City of Alhambra, etc., Pltff.
Vs
Alhambra Packinghouse et al. Def.

Final judgement in favor of Pltff. as per
map, rendered January 30, 1913.

2
C.F. 1016 -

Superior Court Case No. 88803



MEMCO

PASADENA, CAL.