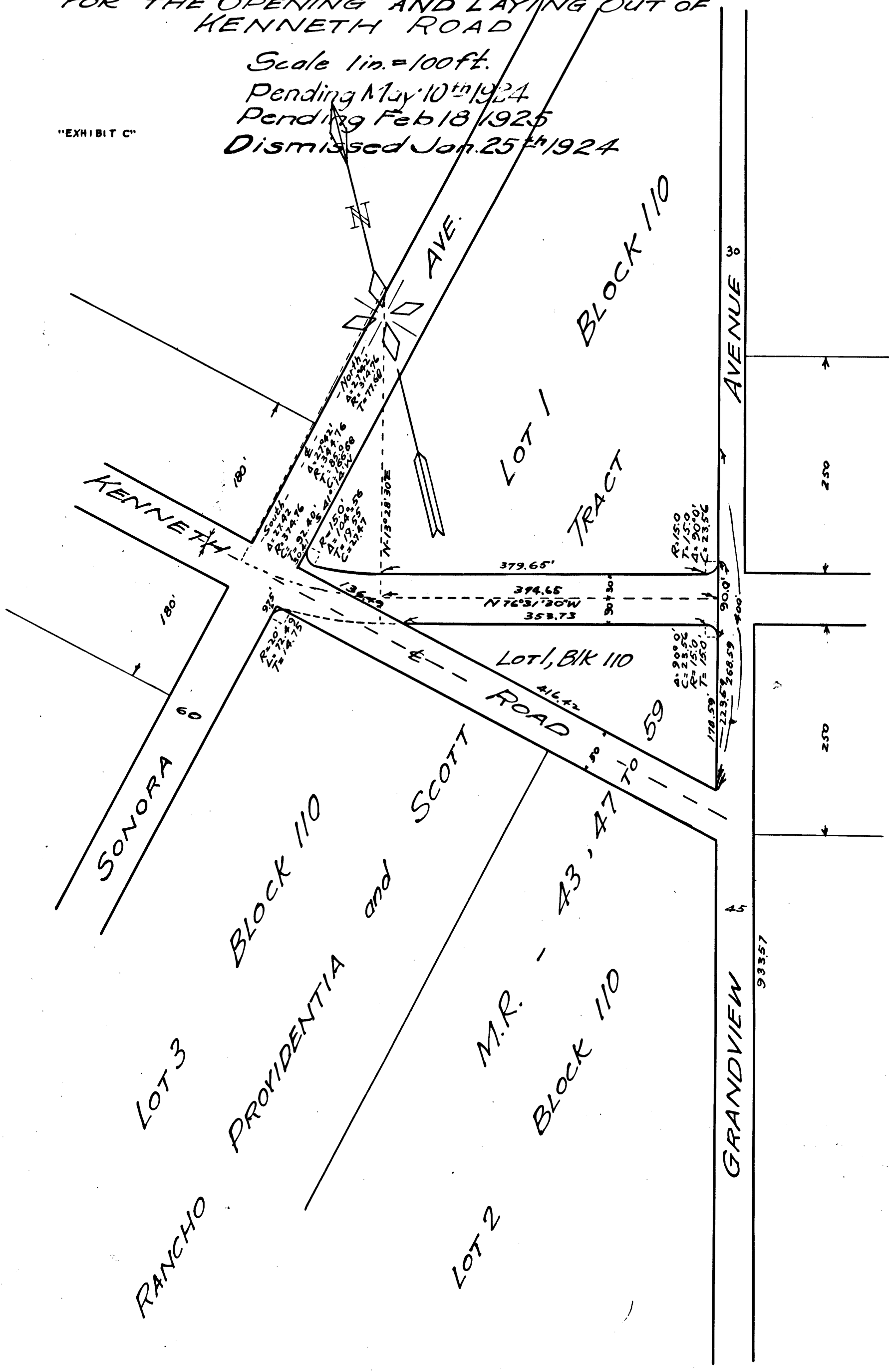


S.C.C. No 114690
MAP No. 566
SHOWING LAND TO BE CONDEMNED
FOR THE OPENING AND LAYING OUT OF
KENNETH ROAD

Scale 1 in. = 100 ft.
Pending May 10th 1924
Pending Feb 18 1925
Dismissed Jan. 25th 1924

"EXHIBIT C"



C.F. 1017

Superior Court Case No 114690

Clerk's File Map No 1017

10TH 957

VEMCO PASADENA, CAL

50TH