

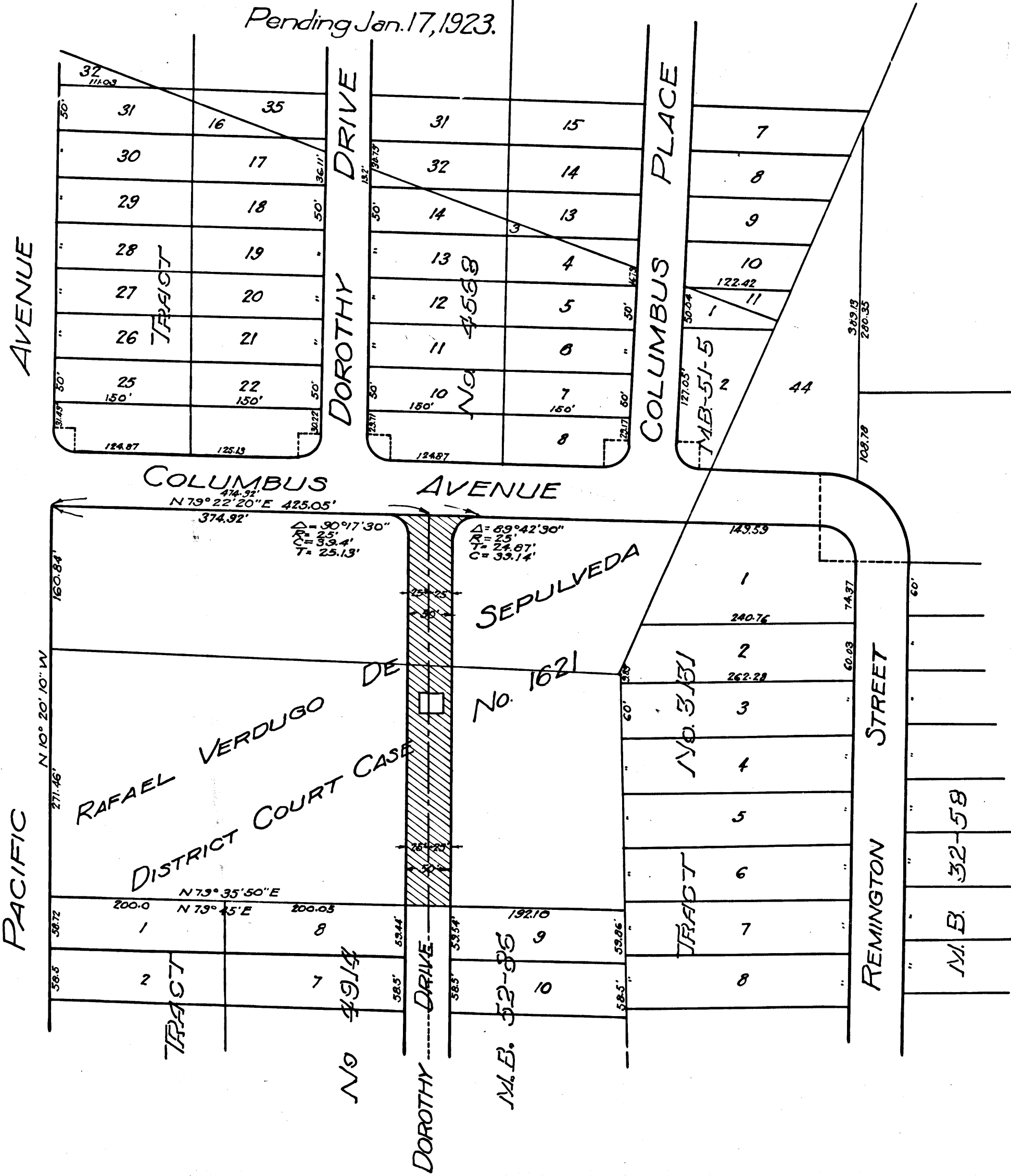
**MAP No. 544**  
 SHOWING LAND TO BE CONDEMNED  
 FOR THE OPENING AND LAYING OUT OF  
 DOROTHY DRIVE  
 FROM THE NORTHERLY LINE OF TRACT  
 No 4914 M.B. - 52-86 TO THE SOUTHERLY  
 LINE OF COLUMBUS AVENUE ALL WITHIN THE  
 CITY OF GLENDALE  
 AND SHOWING THE LAND TO BE  
 ASSESSED TO PAY THE COSTS AND EXPENSES THEREOF  
 Scale 1 in = 100 ft. C.L. Hill City Engr.  
 August 1922.

Superior Court Case No. 115710  
 Suit for Condemnation  
 Filed Jan 4, 1923  
 City of Glendale, Plff.  
 Vs.  
 Lee L. Payne et al. Def.

Interlocutory Judgment April 15<sup>th</sup> 1924  
 Pending May 10<sup>th</sup> 1924  
 Final Judgment Jan. 19<sup>th</sup> 1925  
 D. 44-129 O.R. 3914-368

S. 40 A. 404

Pending Jan. 17, 1923.



LEGEND

- Yellow tinting shows land to be condemned
- Red tinting shows Assessment District

C.F. 1019 -

Superior Court Case No. 115710

City of Glendale