

117398  
 1923  
 1924  
 1925  
 1925  
 Co. et al. Def.

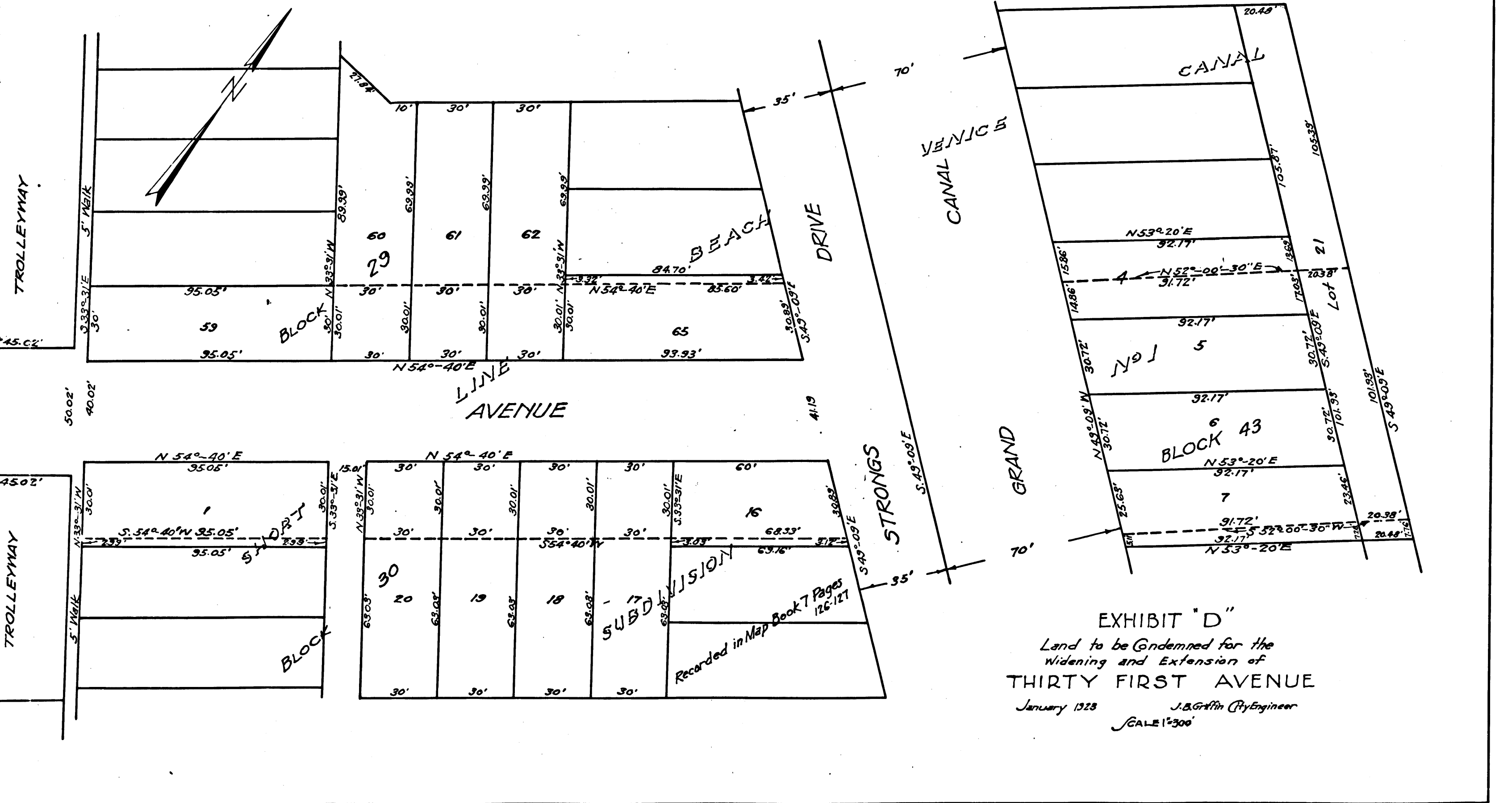
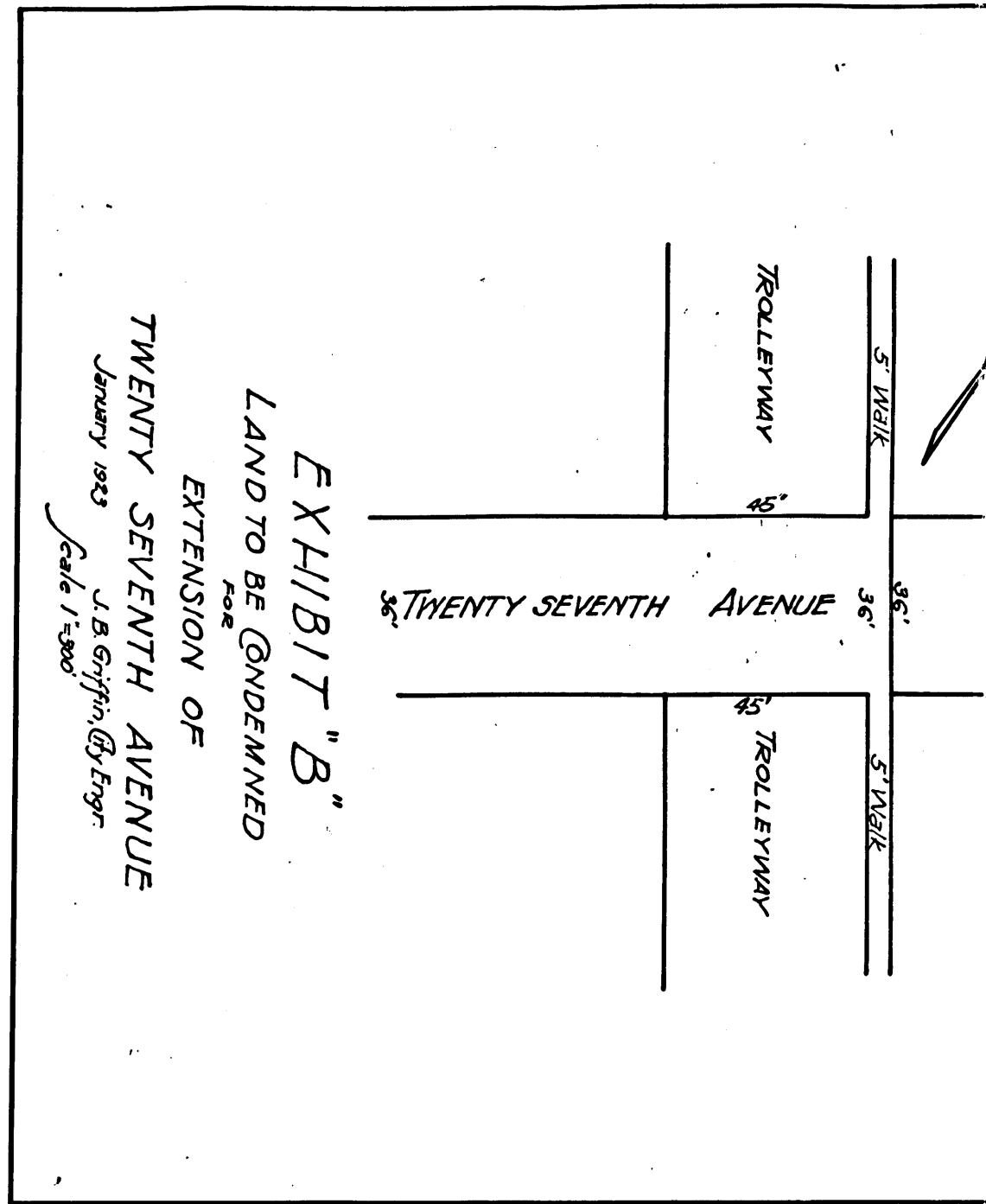
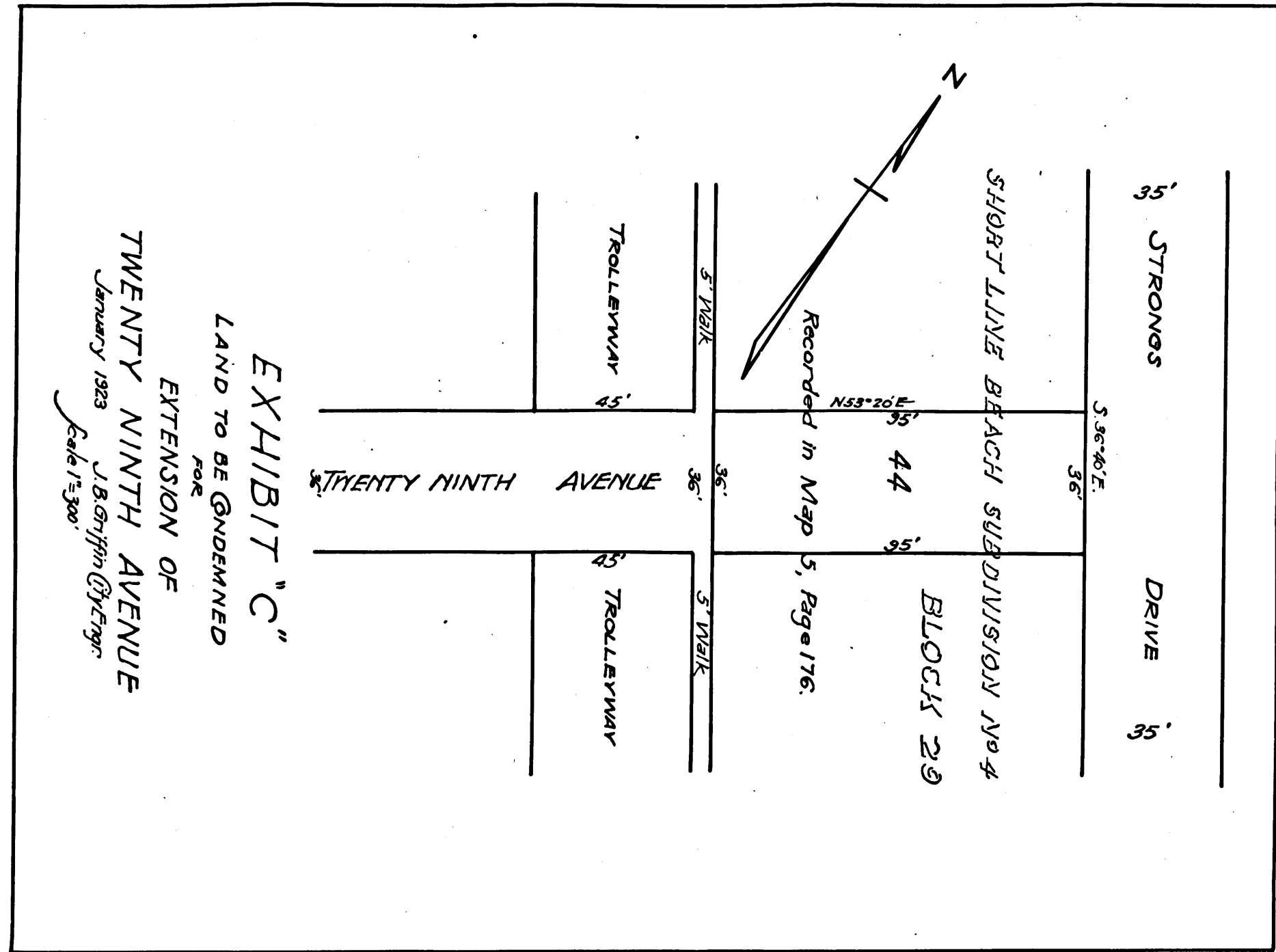
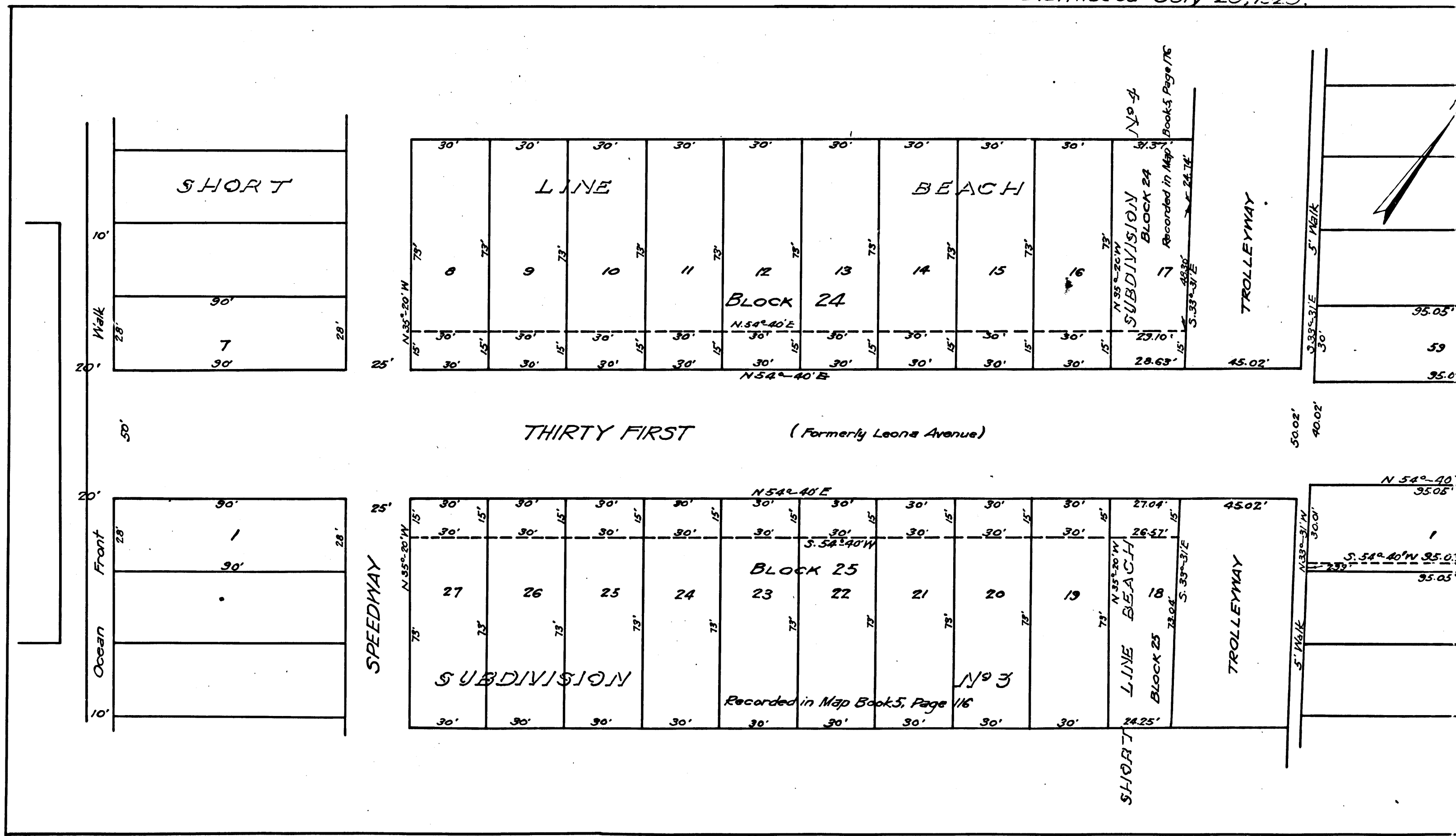


EXHIBIT "D"  
 Land to be Condemned for the  
 Widening and Extension of  
 THIRTY FIRST AVENUE  
 January 1923 J.B. Griffin City Engineer  
 SCALE 1"=300'

C.F. 1020 -



Superior Court Case No 117398  
 Suit for Condemnation  
 Filed Feb. 9<sup>th</sup> 1923  
 City of Venice, Plff.  
 Vs.  
 Washington Blvd. Beach Co. et al. Def.  
 Pending Feb. 24<sup>th</sup> 1923  
 Pending May 10<sup>th</sup> 1924  
 Pending Feb. 18<sup>th</sup> 1925  
 Dismissed July 25, 1925.



2  
 C.F. 1020 -