

Superior Court Case No. 118101
 Suit for Condemnation
 Filed March 1, 1923
 City of Pasadena, Pltff.
 Vs.
 Warden, et al. Def.

Interlocutory Judgment rendered Aug. 3rd 1923
 Final Judgment rendered Dec. 17th 1923

D:57-231-OR. 2941-70

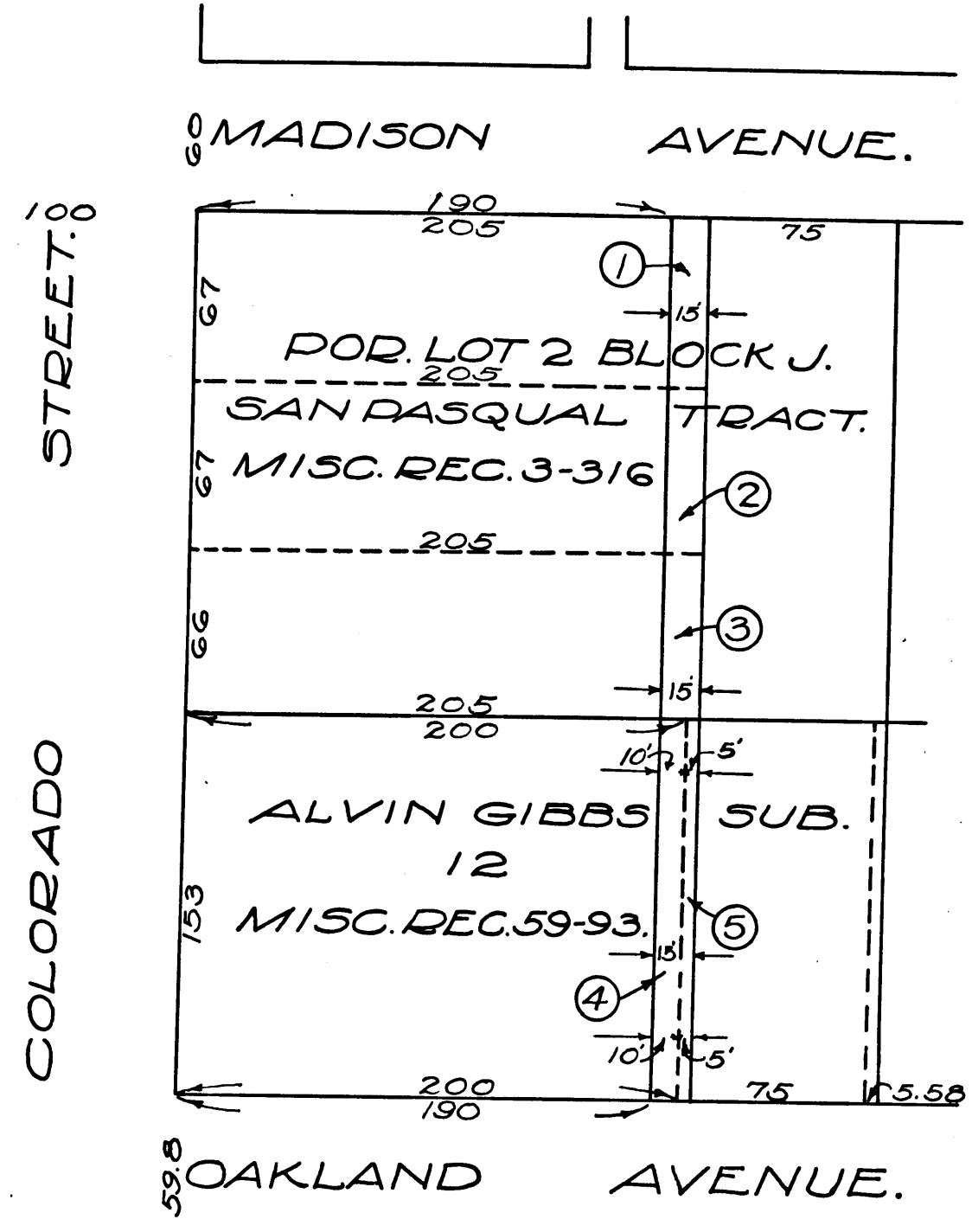


EXHIBIT "C"
 NOTE :-
 SHADED PORTION SHOWS
 LAND TO BE CONDEMNED.

DRAWN BY: G.E.J. CHECKED: J.N. FIELD BOOK: <i>H. Allen</i> DEPUTY CITY ENGINEER APPROVED: <i>W.C. Carl</i>	CITY OF PASADENA OFFICE OF CITY ENGINEER & SUPERINTENDENT OF STREETS, OPENING AND EXTENDING OF CONVERSE ALLEY BETWEEN MADISON AVE & OAKLAND AVE.	DATE JANUARY 1923 SCALE 1 INCH = 60 FEET. DRAWING NUMBER G-73.
--	--	--

Index #8
 1-189

C.F. 1024 -

Superior Court Case No. 118101
 Clerk's Filed Mar 10 1923

Superior Court Case No. 118101
 Clerk's Filed Mar 10 1923

