

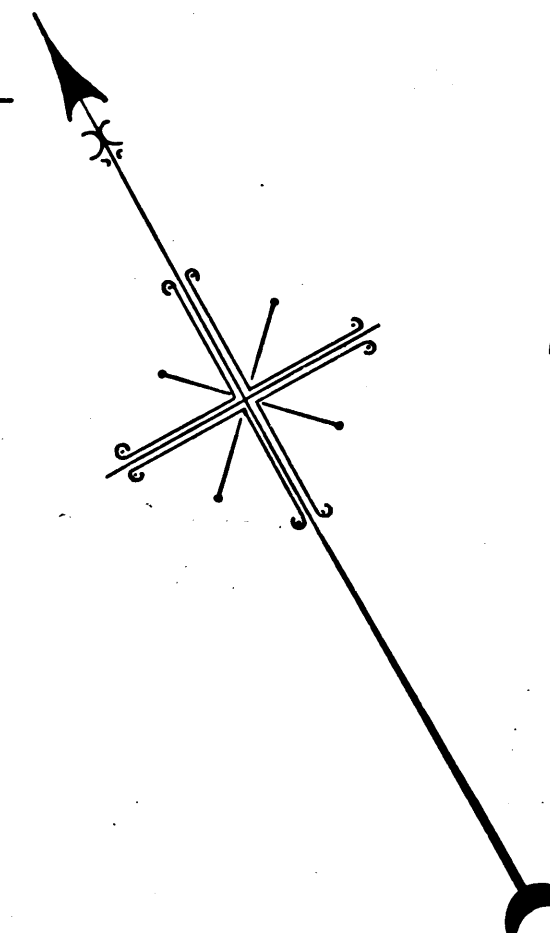
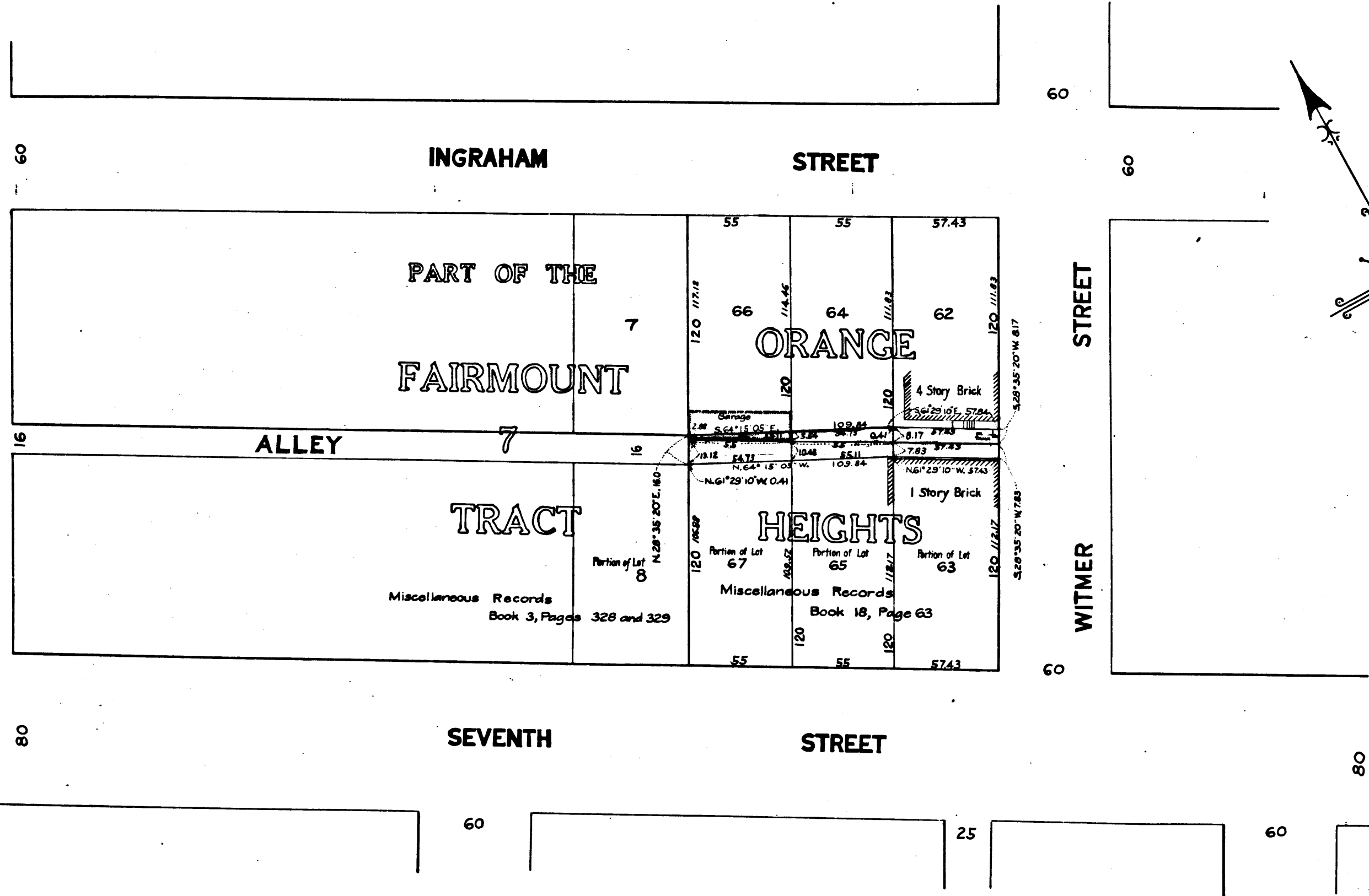
70
A-1242

STREET

70
VALENCIA

A-1242

8



MAP
 SHOWING LAND TO BE CONDEMNED
 FOR THE OPENING AND EXTENDING OF THE FIRST
ALLEY
 SOUTHERLY OF INGRAHAM STREET
 BETWEEN
WITMER STREET AND VALENCIA STREET
 IN THE
CITY OF LOS ANGELES, CALIFORNIA

In accordance with Ordinances Nos 44903 & 45510 (New Series)

Scale- 1 inch = 50 feet

John A. Griffin, City Engineer

February, 1923

NOTE- Land to be condemned shown colored red.

Superior Court Case No 119717

Suit for Condemnation
 Filed Mar. 30, 1923

City of Los Angeles, Pltff.

Vs.

Berry, et.al. etc.

Pending May 10th 1924

Interlocutory Judgment June 16th 1924

Pending Feb. 18th 1925

Dismissed April 8th 1925

A-1545

C.F. 1029

A-1242

OFFICE OF THE CITY ENGINEER
CITY OF LOS ANGELES
PROPERTY OF THE

A-1242

by: M.L.M.
d by: