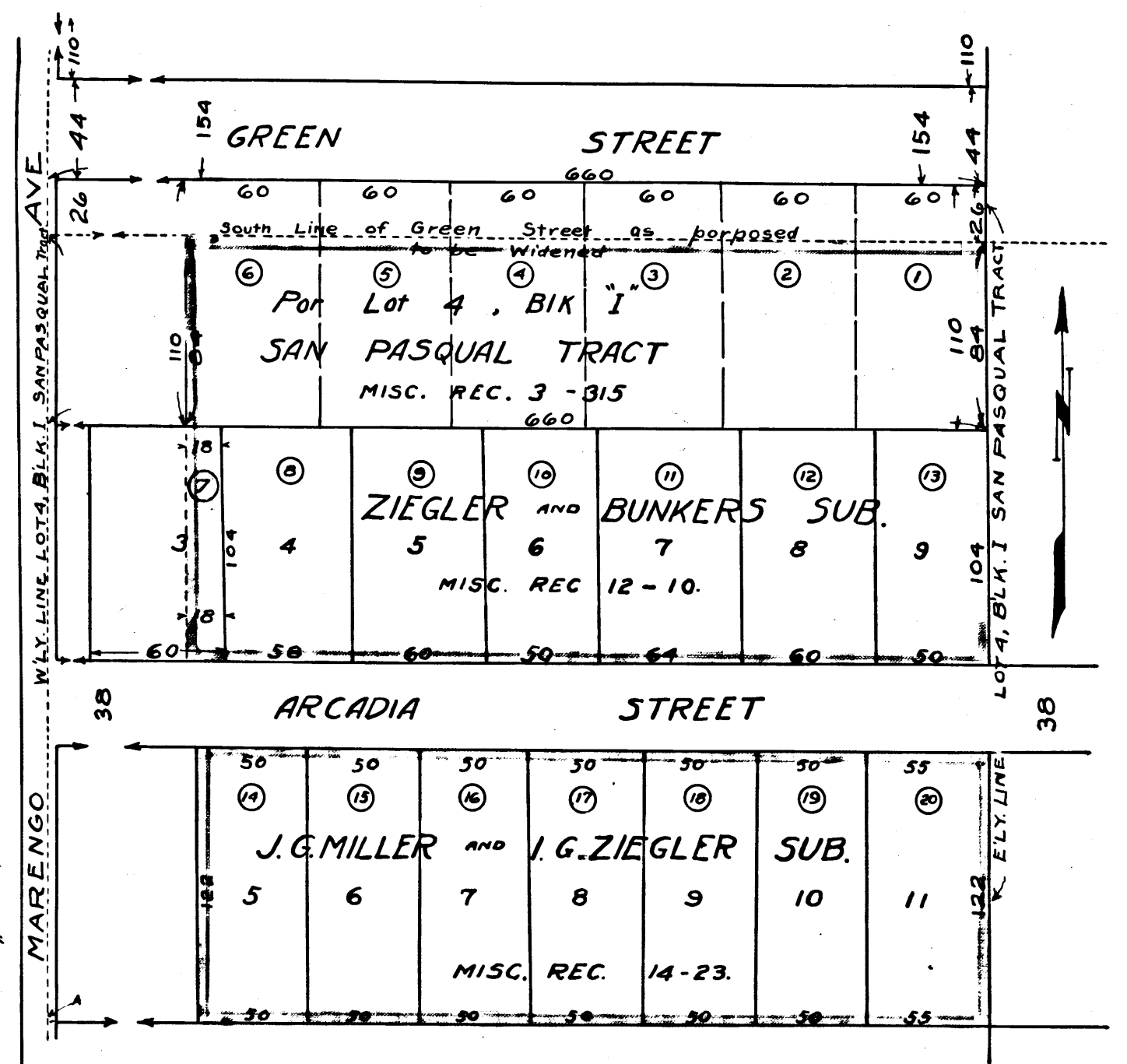


Clerks Filed Map No. 1020 Superior Court Case No. 11222

Clerks Filed Map No. 1030 Superior Court Case No. 11222

Parcel	City of Pasadena	D:38-152 Cert BY-2662
12	"	D:38-104 O.R. 2568-260
13 & 20	"	D:38-105 O.R. 2454-2639
17	"	D:38-108 O.R. 2891-275
9	"	D:38-112 G.R. 2873-259
18	"	D:38-123 O.R. 3041-220
15	"	D:38-125 O.R. 3108-27
8	"	D:38-97 O.R. 3020-132
14	"	D:38-70 O.R. 2802-374
17	"	D:38-77 O.R. 3031-51
3	"	D:38-6 O.R. 2954-16
16	"	D:38-29 O.R. 2869-248
4	"	D:36-264 O.R. 2567-357
5	"	D:38-77 O.R. 2924-175
6	"	D:38-48 O.R. 2655-378



NOTE - LAND IN COLORED BORDER PROPOSED TO BE CONDEMNED.

EXHIBIT "B"

DRAWN BY W.A.M. CHECKED BY A.F.B. FIELD BOOKS APPROVED W.C. Earle CITY ENGINEER & SUPERINTENDENT OF STREETS	CITY OF PASADENA OFFICE OF CITY ENGINEER & SUPERINTENDENT OF STREETS PLAT OF PROPOSED CONVENTION HALL SITE	DATE MARCH 1923. SCALE 1" = 60' DRAWING NUMBER G-83.
---	---	--

Index # 8

Superior Court Case No. 119585
 Suit for Condemnation
 Filed Mar 28, 1923
 City of Pasadena, Pitff.
 Vs.
 Winslow, et al Def.

Interlocutory Judgment on parcel 13 March 4th 1924
 " " " " 21st 1924
 " " " " 3rd 1924
 " " " " 17th 1923
 " " " " 3rd Feb 16th 1924
 Final Judgment on parcel 3 Feb 13th 1924
 Pending May 10th 1924
 Pending Feb 18th 1925

Final Judgment on parcels 2, 10, 11 and 13.
 D:44-242 O.R. 3996-255
 Pending May 14th 1920

C.F. 1030 -

sht. 42

MEMCO PASADENA CAL

MEMCO PASADENA CAL

LS 6

LS 6

H101

H101