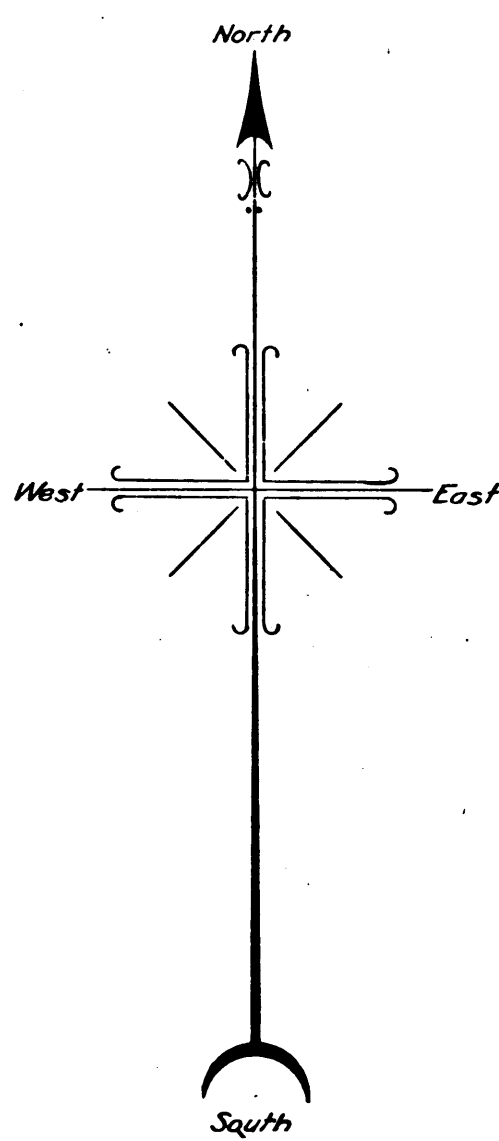
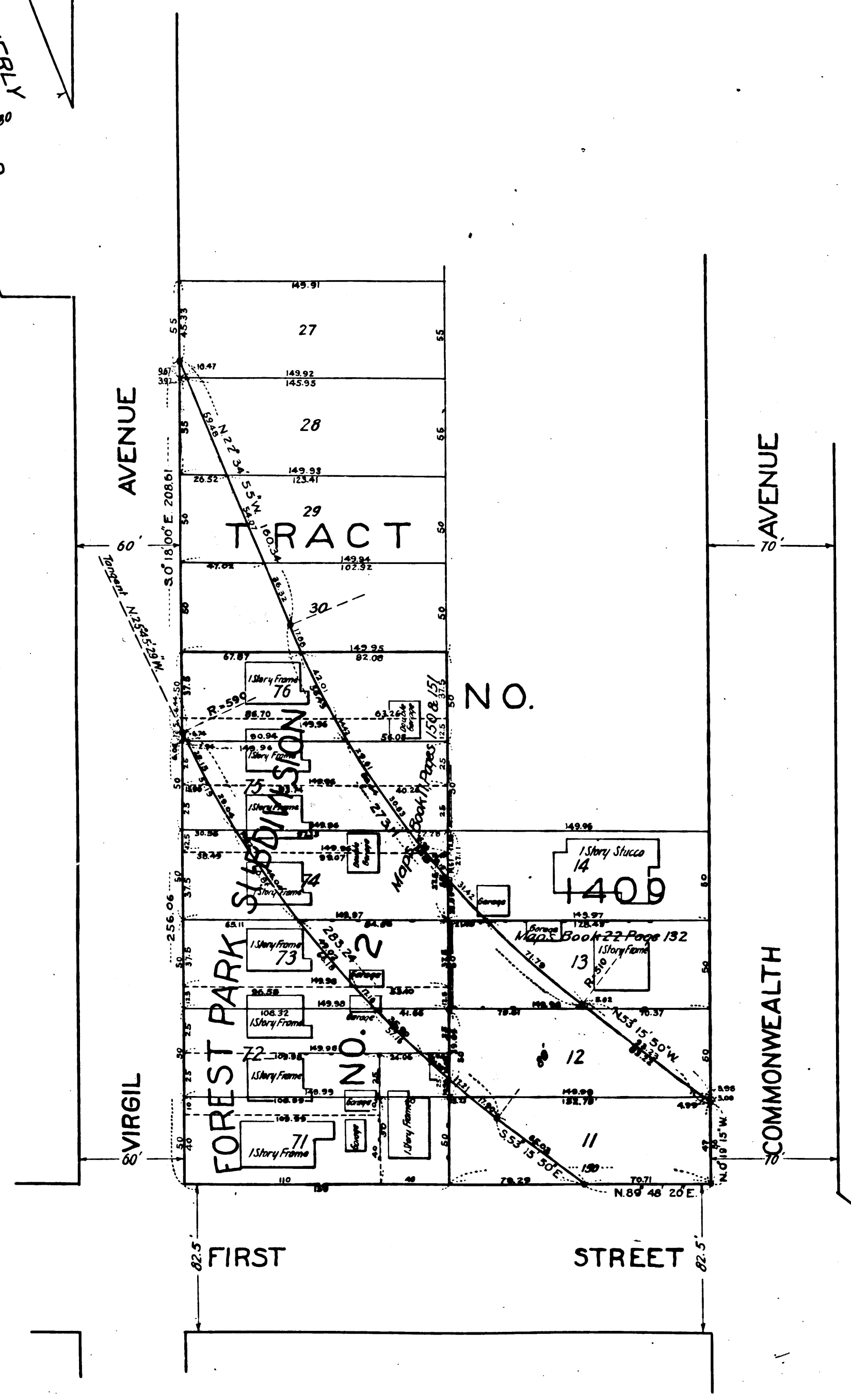


0221-A-1220

BEVERLY BOULEVARD
0221-A

RECORD TO CITY ENGINEER'S OFFICE
CITY OF LOS ANGELES
FROM THE
OFFICE OF THE CITY ENGINEER



MAP
SHOWING THE LAND TO BE CONDEMNED
FOR THE OPENING AND EXTENDING OF
BEVERLY BOULEVARD
BETWEEN
VIRGIL AVENUE AND COMMONWEALTH AVENUE
IN THE
CITY OF LOS ANGELES, CAL.

In accordance with Ordinances Nos. 44494 and 45063 (New Series)

JOHN A. GRIFFIN, CITY ENGINEER FEBRUARY, 1923
Scale 1 Inch = 50 Feet
Note—Land to be condemned shown colored red
Dotted lines and figures show where the actual holdings
differ from the recorded subdivisions.

Superior Court Case No. 119794
Suit for Condemnation.
Filed April 2, 1923.
City of Los Angeles Plaintiff
vs.
Frost, et al. Defendant.
Interlocutory Judgment Rendered Mar. 27, 1924
Pending May 10th 1924
Pending Feb. 18th 1925

Final judgment, as per map, rendered in favor
of Plaintiff, February 19, 1925.
D: 40-197 O.R. 4022-268.

0221-A-1220

RECORD TO CITY ENGINEER'S OFFICE
CITY OF LOS ANGELES
FROM THE
OFFICE OF THE CITY ENGINEER

A-1550

C.F. 11036

VEMCO PASADENA CAL.

VEMCO PASADENA CAL.

9 5 7

9 5 7

10TH

10TH